

Product datasheet

Anti-CD146 antibody - C-terminal ab228540

★★★★★ [2 Abreviews](#) [1 References](#) [6 Images](#)

Overview

Product name	Anti-CD146 antibody - C-terminal
Description	Rabbit polyclonal to CD146 - C-terminal
Host species	Rabbit
Tested applications	Suitable for: WB, IHC-P, ICC/IF
Species reactivity	Reacts with: Mouse, Rat, Human
Immunogen	Recombinant fragment within Human CD146 (C terminal). The exact sequence is proprietary. Database link: P43121
Positive control	WB: Rat liver extract; HCT 116 whole cell lysate. IHC-P: J5 xenograft; Mouse skin and colon tissues. ICC/IF: HUVEC cells.
General notes	<p>The Life Science industry has been in the grips of a reproducibility crisis for a number of years. Abcam is leading the way in addressing this with our range of recombinant monoclonal antibodies and knockout edited cell lines for gold-standard validation. Please check that this product meets your needs before purchasing.</p> <p>If you have any questions, special requirements or concerns, please send us an inquiry and/or contact our Support team ahead of purchase. Recommended alternatives for this product can be found below, along with publications, customer reviews and Q&As</p>

Properties

Form	Liquid
Storage instructions	Shipped at 4°C. Store at +4°C short term (1-2 weeks). Upon delivery aliquot. Store at -20°C long term. Avoid freeze / thaw cycle.
Storage buffer	pH: 7.00 Preservative: 0.01% Thimerosal (merthiolate) Constituents: 79.99% PBS, 20% Glycerol (glycerin, glycerine)
Purity	Immunogen affinity purified
Clonality	Polyclonal
Isotype	IgG

Applications

The Abpromise guarantee

Our **Abpromise guarantee** covers the use of ab228540 in the following tested applications.

The application notes include recommended starting dilutions; optimal dilutions/concentrations should be determined by the end user.

Application	Abreviews	Notes
WB		1/500 - 1/3000. Predicted molecular weight: 72 kDa.
IHC-P	★★★★★ (2)	1/100 - 1/1000.
ICC/IF		1/100 - 1/1000.

Target

Function

Plays a role in cell adhesion, and in cohesion of the endothelial monolayer at intercellular junctions in vascular tissue. Its expression may allow melanoma cells to interact with cellular elements of the vascular system, thereby enhancing hematogeneous tumor spread. Could be an adhesion molecule active in neural crest cells during embryonic development. Acts as surface receptor that triggers tyrosine phosphorylation of FYN and PTK2, and a transient increase in the intracellular calcium concentration.

Tissue specificity

Detected in endothelial cells in vascular tissue throughout the body. May appear at the surface of neural crest cells during their embryonic migration. Appears to be limited to vascular smooth muscle in normal adult tissues. Associated with tumor progression and the development of metastasis in human malignant melanoma. Expressed most strongly on metastatic lesions and advanced primary tumors and is only rarely detected in benign melanocytic nevi and thin primary melanomas with a low probability of metastasis.

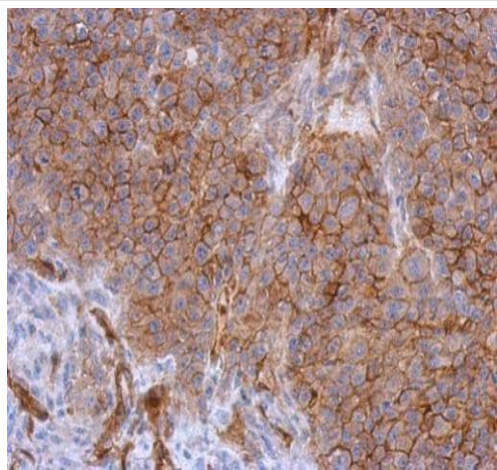
Sequence similarities

Contains 3 Ig-like C2-type (immunoglobulin-like) domains.
Contains 2 Ig-like V-type (immunoglobulin-like) domains.

Cellular localization

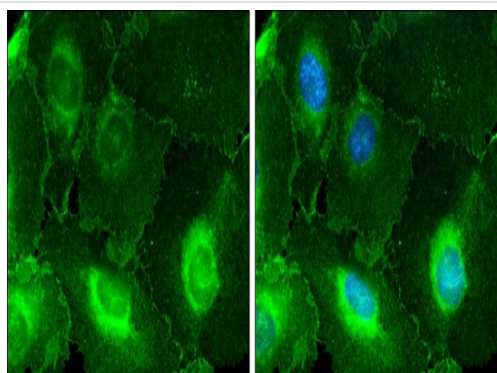
Membrane.

Images



Paraffin-embedded J5 xenograft stained for CD146 using ab228540 at 1/500 dilution in immunohistochemical analysis.

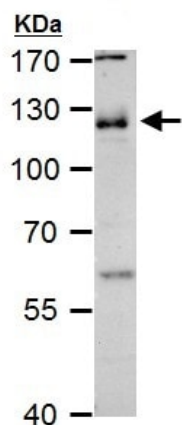
Immunohistochemistry (Formalin/PFA-fixed paraffin-embedded sections) - Anti-CD146 antibody - C-terminal (ab228540)



4% paraformaldehyde-fixed HUVEC (human umbilical vein endothelial cell line) cells stained for CD146 (green) using ab228540 at 1/500 dilution in ICC/IF.

Nuclear counter stain: Hoechst 33342 (blue).

Immunocytochemistry/ Immunofluorescence - Anti-CD146 antibody - C-terminal (ab228540)

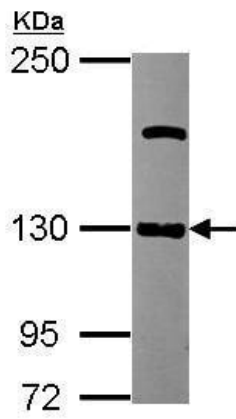


Anti-CD146 antibody - C-terminal (ab228540) at 1/1000 dilution + Rat liver extract at 50 µg

Predicted band size: 72 kDa

7.5% SDS-PAGE gel.

Western blot - Anti-CD146 antibody - C-terminal (ab228540)

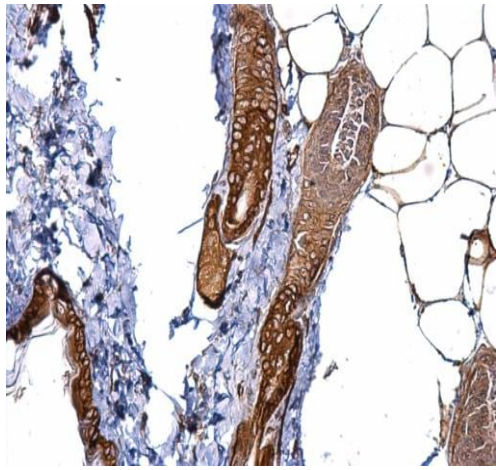


Western blot - Anti-CD146 antibody - C-terminal (ab228540)

Anti-CD146 antibody - C-terminal (ab228540) at 1/1000 dilution + HCT 116 (human colorectal carcinoma cell line) whole cell lysate at 30 μ g

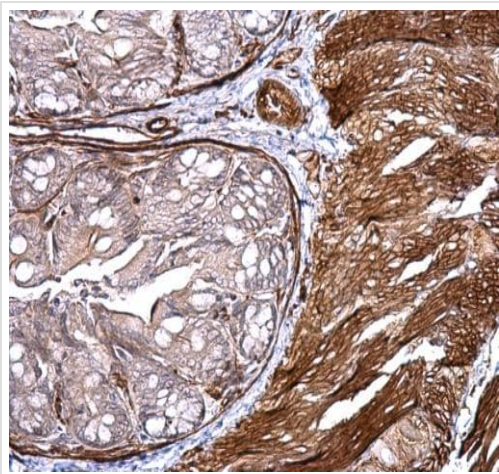
Predicted band size: 72 kDa

5% SDS-PAGE gel.



Immunohistochemistry (Formalin/PFA-fixed paraffin-embedded sections) - Anti-CD146 antibody - C-terminal (ab228540)

Paraffin-embedded mouse skin tissue stained for CD146 using ab228540 at 1/500 dilution in immunohistochemical analysis.



Paraffin-embedded mouse colon tissue stained for CD146 using ab228540 at 1/500 dilution in immunohistochemical analysis.

Immunohistochemistry (Formalin/PFA-fixed paraffin-embedded sections) - Anti-CD146 antibody - C-terminal (ab228540)

Please note: All products are "FOR RESEARCH USE ONLY. NOT FOR USE IN DIAGNOSTIC PROCEDURES"

Our Abpromise to you: Quality guaranteed and expert technical support

- Replacement or refund for products not performing as stated on the datasheet
- Valid for 12 months from date of delivery
- Response to your inquiry within 24 hours
- We provide support in Chinese, English, French, German, Japanese and Spanish
- Extensive multi-media technical resources to help you
- We investigate all quality concerns to ensure our products perform to the highest standards

If the product does not perform as described on this datasheet, we will offer a refund or replacement. For full details of the Abpromise, please visit <https://www.abcam.com/abpromise> or contact our technical team.

Terms and conditions

- Guarantee only valid for products bought direct from Abcam or one of our authorized distributors