

Product datasheet

Anti-CD147 antibody [MEM-M6/2] ab21903

KO VALIDATED

★★★★☆ [1 Abreviews](#) [1 Image](#)

Overview

Product name	Anti-CD147 antibody [MEM-M6/2]
Description	Mouse monoclonal [MEM-M6/2] to CD147
Host species	Mouse
Tested applications	Suitable for: Flow Cyt
Species reactivity	Reacts with: Human
Immunogen	A soluble recombinant form of CD147, CD147Rg, which consists of the cDNA coding for the entire extracellular region of CD147 fused to the DNA coding for the hinge region, CH2 and CH3 domain of human IgG1.
Epitope	This antibody recognises extracellular Ig domain D1 of CD147 antigen.
Positive control	Flow Cyt: A549 cells.
General notes	<p>This product was changed from ascites to tissue culture supernatant. Please note that the dilutions may need to be adjusted accordingly. If you have any questions, please do not hesitate to contact our scientific support team.</p> <p>The Life Science industry has been in the grips of a reproducibility crisis for a number of years. Abcam is leading the way in addressing this with our range of recombinant monoclonal antibodies and knockout edited cell lines for gold-standard validation. Please check that this product meets your needs before purchasing.</p> <p>If you have any questions, special requirements or concerns, please send us an inquiry and/or contact our Support team ahead of purchase. Recommended alternatives for this product can be found below, along with publications, customer reviews and Q&As</p>

Properties

Form	Liquid
Storage instructions	Shipped at 4°C. Store at +4°C short term (1-2 weeks). Upon delivery aliquot. Store at -20°C or -80°C. Avoid freeze / thaw cycle.
Storage buffer	pH: 7.40 Preservative: 0.097% Sodium azide Constituent: PBS

Purity	Protein A purified
Purification notes	> 95% (by SDS-PAGE). Purified from TCS
Clonality	Monoclonal
Clone number	MEM-M6/2
Isotype	IgG2b

Applications

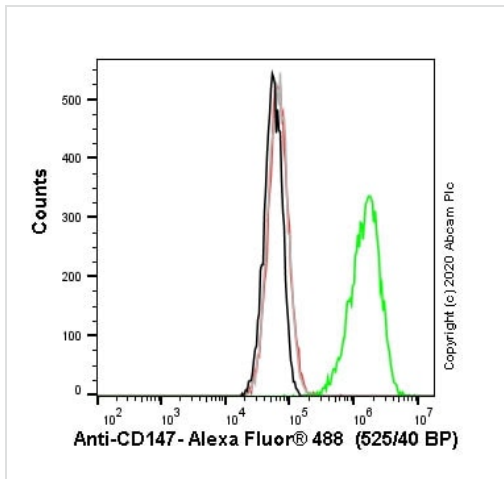
The Abpromise guarantee Our **Abpromise guarantee** covers the use of ab21903 in the following tested applications. The application notes include recommended starting dilutions; optimal dilutions/concentrations should be determined by the end user.

Application	Abreviews	Notes
Flow Cyt		Use a concentration of 5 µg/ml.

Target

Function	Plays pivotal roles in spermatogenesis, embryo implantation, neural network formation and tumor progression. Stimulates adjacent fibroblasts to produce matrix metalloproteinases (MMPS). May target monocarboxylate transporters SLC16A1, SLC16A3 and SLC16A8 to plasma membranes of retinal pigment epithelium and neural retina. Seems to be a receptor for oligomannosidic glycans. In vitro, promotes outgrowth of astrocytic processes.
Tissue specificity	Present only in vascular endothelium in non-neoplastic regions of the brain, whereas it is present in tumor cells but not in proliferating blood vessels in malignant gliomas.
Sequence similarities	Contains 1 Ig-like C2-type (immunoglobulin-like) domain. Contains 1 Ig-like V-type (immunoglobulin-like) domain.
Post-translational modifications	N-glycosylated.
Cellular localization	Cell membrane. Melanosome. Colocalizes with SLC16A1 and SLC16A8 (By similarity). Identified by mass spectrometry in melanosome fractions from stage I to stage IV.

Images



Flow Cytometry - Anti-CD147 antibody [MEM-M6/2] (ab21903)

Flow cytometry overlay histogram showing wild-type A549 (green line) and BSG knockout A549 cells ([ab273748](#)) stained with ab21903 (red line). The cells were incubated in 1x PBS containing 10% normal goat serum to block non-specific protein-protein interaction followed by the antibody (ab21903) (1×10^6 in $100 \mu\text{l}$ at $5 \mu\text{g/ml}$) for 30 min at 4°C .

The secondary antibody Goat anti-mouse IgG H&L (Alexa Fluor[®] 488, pre-adsorbed) ([ab150117](#)) was used at 1/2000 for 30 min at 4°C .

Isotype control antibody was mouse IgG2bk ([ab170192](#)) used at the same concentration and conditions as the primary antibody (wild-type A549 - black line; BSG knockout A549 - grey line). Unlabelled sample was also used as a control (this line is not shown for the purpose of simplicity).

Acquisition of >5000 events were collected using a 50 mW Blue laser (488nm) and 525/40 bandpass filter.

Please note: All products are "FOR RESEARCH USE ONLY. NOT FOR USE IN DIAGNOSTIC PROCEDURES"

Our Abpromise to you: Quality guaranteed and expert technical support

- Replacement or refund for products not performing as stated on the datasheet
- Valid for 12 months from date of delivery
- Response to your inquiry within 24 hours
- We provide support in Chinese, English, French, German, Japanese and Spanish
- Extensive multi-media technical resources to help you
- We investigate all quality concerns to ensure our products perform to the highest standards

If the product does not perform as described on this datasheet, we will offer a refund or replacement. For full details of the Abpromise, please visit <https://www.abcam.com/abpromise> or contact our technical team.

Terms and conditions

- Guarantee only valid for products bought direct from Abcam or one of our authorized distributors