

Product datasheet

Anti-CD16 antibody [SP175] - BSA and Azide free ab243925

Recombinant RabMAb

13 Images

Overview

Product name	Anti-CD16 antibody [SP175] - BSA and Azide free
Description	Rabbit monoclonal [SP175] to CD16 - BSA and Azide free
Host species	Rabbit
Tested applications	Suitable for: IHC-P, Flow Cyt (Intra)
Species reactivity	Reacts with: Human
Immunogen	Synthetic peptide. This information is proprietary to Abcam and/or its suppliers.
Positive control	IHC-P: Human lung, thymus, B cell lymphoma, uterus, spleen, placenta, liver, liver hepatocellular carcinoma, lung adenocarcinoma, pancreatic adenocarcinoma and HK lymphoma tissues. Flow Cyt: Jurkat cells.
General notes	ab243925 is the carrier-free version of ab183354 .

Our **carrier-free** antibodies are typically supplied in a PBS-only formulation, purified and free of BSA, sodium azide and glycerol. The carrier-free buffer and high concentration allow for increased conjugation efficiency.

This conjugation-ready format is designed for use with fluorochromes, metal isotopes, oligonucleotides, and enzymes, which makes them ideal for antibody labelling, functional and cell-based assays, flow-based assays (e.g. mass cytometry) and Multiplex Imaging applications.

Use our **conjugation kits** for antibody conjugates that are ready-to-use in as little as 20 minutes with <1 minute hands-on-time and 100% antibody recovery: available for fluorescent dyes, HRP, biotin and gold.

This product is compatible with the Maxpar[®] Antibody Labeling Kit from Fluidigm, without the need for antibody preparation. Maxpar[®] is a trademark of Fluidigm Canada Inc.

This product is a recombinant monoclonal antibody, which offers several advantages including:

- High batch-to-batch consistency and reproducibility
- Improved sensitivity and specificity
- Long-term security of supply
- Animal-free production

For more information [see here](#).

This product is FOR RESEARCH USE ONLY. For commercial use, please contact

Properties

Form	Liquid
Storage instructions	Shipped at 4°C. Store at +4°C. Do Not Freeze.
Storage buffer	pH: 7.20 Constituent: PBS
Carrier free	Yes
Purity	Protein A/G purified
Purification notes	Purified from TCS by protein A/G.
Clonality	Monoclonal
Clone number	SP175
Isotype	IgG

Applications

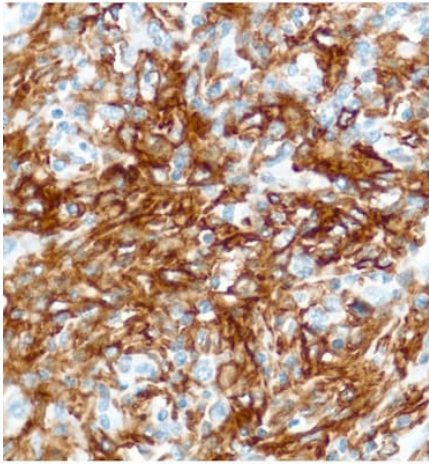
The Abpromise guarantee Our **Abpromise guarantee** covers the use of ab243925 in the following tested applications. The application notes include recommended starting dilutions; optimal dilutions/concentrations should be determined by the end user.

Application	Abreviews	Notes
IHC-P		Use at an assay dependent concentration. Antigen retrieval: Boil tissue section in EDTA buffer, pH 8.0 for 10 min followed by cooling at room temperature for 20 min.
Flow Cyt (Intra)		Use at an assay dependent concentration.

Target

Function	Receptor for the Fc region of IgG. Binds complexed or aggregated IgG and also monomeric IgG. Mediates antibody-dependent cellular cytotoxicity (ADCC) and other antibody-dependent responses, such as phagocytosis.
Tissue specificity	Expressed on natural killer cells, macrophages, subpopulation of T-cells, immature thymocytes and placental trophoblasts.
Sequence similarities	Contains 2 Ig-like C2-type (immunoglobulin-like) domains.
Post-translational modifications	Glycosylated. Contains high mannose- and complex-type oligosaccharides. The soluble form is produced by a proteolytic cleavage.
Cellular localization	Cell membrane. Secreted. Exists also as a soluble receptor.

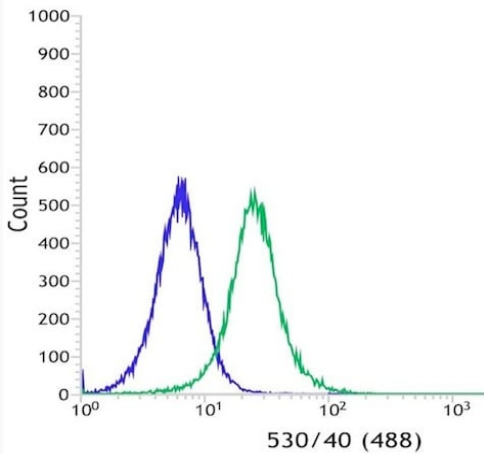
Images



Immunohistochemical analysis of paraffin embedded human HK lymphoma tissue labeling CD16 with **ab183354** at 1/100 dilution.

This data was developed using the same antibody clone in a different buffer formulation containing PBS, BSA and sodium azide (**ab183354**).

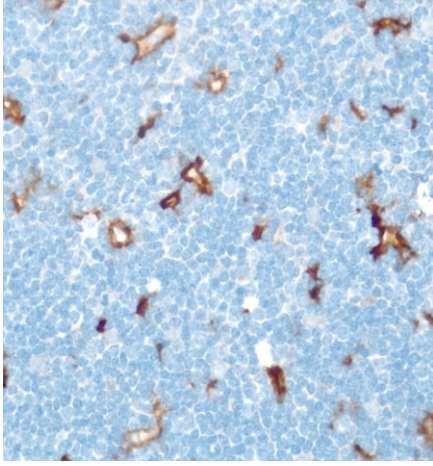
Immunohistochemistry (Formalin/PFA-fixed paraffin-embedded sections) - Anti-CD16 antibody [SP175] - BSA and Azide free (ab243925)



Flow cytometric analysis of Jurkat (Human T cell leukemia cell line from peripheral blood) cells labeling CD16 with **ab183354** at a 1/100 dilution (green) compared to a negative control Rabbit IgG (blue).

This data was developed using the same antibody clone in a different buffer formulation containing PBS, BSA and sodium azide (**ab183354**).

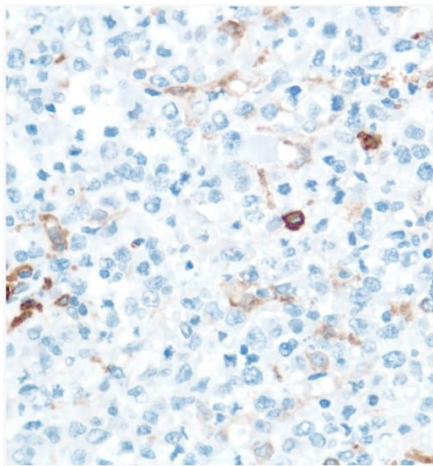
Flow Cytometry - Anti-CD16 antibody [SP175] - BSA and Azide free (ab243925)



Immunohistochemistry (Formalin/PFA-fixed paraffin-embedded sections) - Anti-CD16 antibody [SP175] - BSA and Azide free (ab243925)

Immunohistochemical analysis of paraffin embedded human thymus tissue labeling CD16 with **ab183354** at 1/100 dilution.

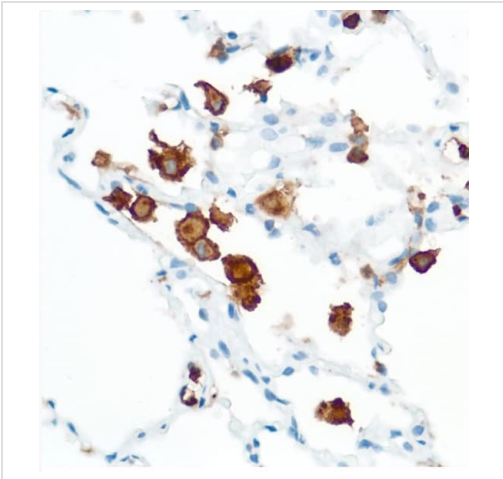
This data was developed using the same antibody clone in a different buffer formulation containing PBS, BSA and sodium azide (**ab183354**).



Immunohistochemistry (Formalin/PFA-fixed paraffin-embedded sections) - Anti-CD16 antibody [SP175] - BSA and Azide free (ab243925)

Immunohistochemical analysis of paraffin embedded human B cell lymphoma tissue labeling CD16 with **ab183354** at 1/100 dilution.

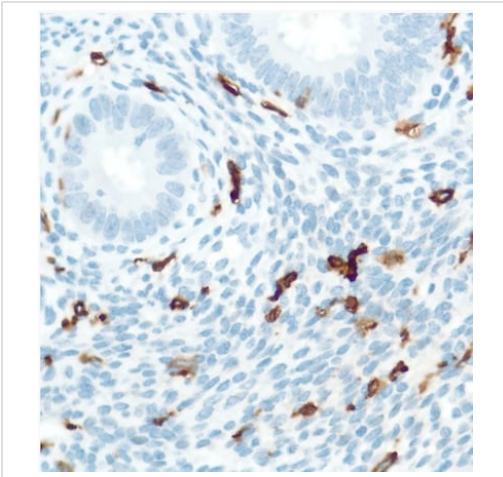
This data was developed using the same antibody clone in a different buffer formulation containing PBS, BSA and sodium azide (**ab183354**).



Immunohistochemistry (Formalin/PFA-fixed paraffin-embedded sections) - Anti-CD16 antibody [SP175] - BSA and Azide free (ab243925)

Immunohistochemical analysis of paraffin embedded human lung tissue labeling CD16 with **ab183354** at 1/100 dilution.

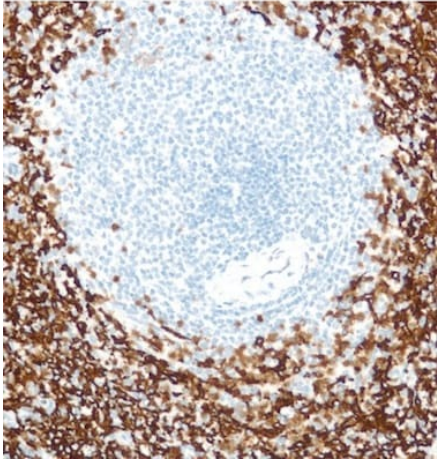
This data was developed using the same antibody clone in a different buffer formulation containing PBS, BSA and sodium azide (**ab183354**).



Immunohistochemistry (Formalin/PFA-fixed paraffin-embedded sections) - Anti-CD16 antibody [SP175] - BSA and Azide free (ab243925)

Immunohistochemical analysis of paraffin embedded human uterus tissue labeling CD16 with **ab183354** at 1/100 dilution.

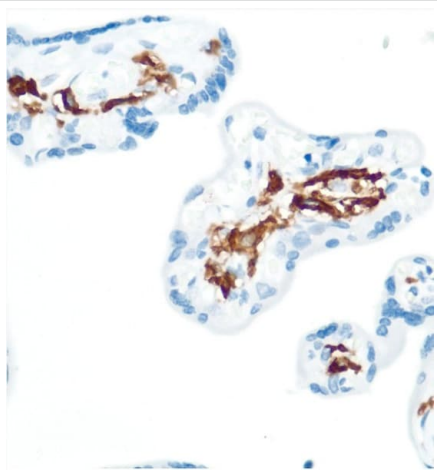
This data was developed using the same antibody clone in a different buffer formulation containing PBS, BSA and sodium azide (**ab183354**).



Immunohistochemistry (Formalin/PFA-fixed paraffin-embedded sections) - Anti-CD16 antibody [SP175] - BSA and Azide free (ab243925)

Immunohistochemical analysis of paraffin embedded human spleen tissue labeling CD16 with **ab183354** at 1/100 dilution.

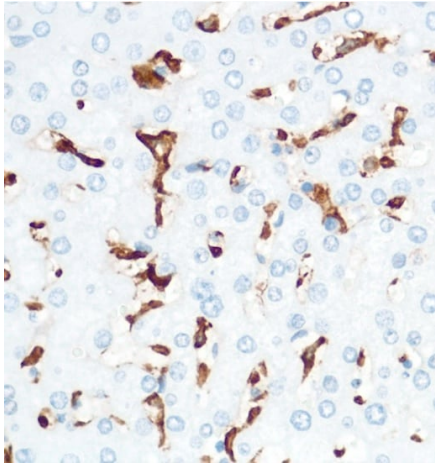
This data was developed using the same antibody clone in a different buffer formulation containing PBS, BSA and sodium azide (**ab183354**).



Immunohistochemistry (Formalin/PFA-fixed paraffin-embedded sections) - Anti-CD16 antibody [SP175] - BSA and Azide free (ab243925)

Immunohistochemical analysis of paraffin embedded human placenta tissue labeling CD16 with **ab183354** at 1/100 dilution.

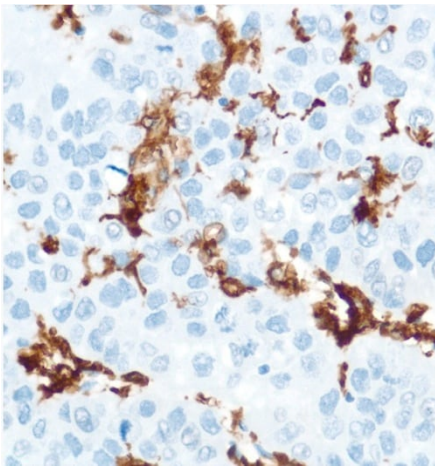
This data was developed using the same antibody clone in a different buffer formulation containing PBS, BSA and sodium azide (**ab183354**).



Immunohistochemistry (Formalin/PFA-fixed paraffin-embedded sections) - Anti-CD16 antibody [SP175] - BSA and Azide free (ab243925)

Immunohistochemical analysis of paraffin embedded human liver tissue labeling CD16 with **ab183354** at 1/100 dilution.

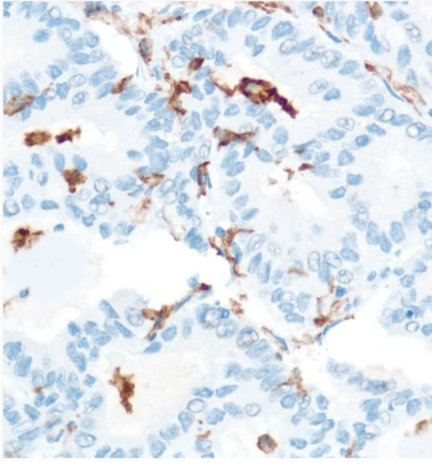
This data was developed using the same antibody clone in a different buffer formulation containing PBS, BSA and sodium azide (**ab183354**).



Immunohistochemistry (Formalin/PFA-fixed paraffin-embedded sections) - Anti-CD16 antibody [SP175] - BSA and Azide free (ab243925)

Immunohistochemical analysis of paraffin embedded human liver hepatocellular carcinoma tissue labeling CD16 with **ab183354** at 1/100 dilution.

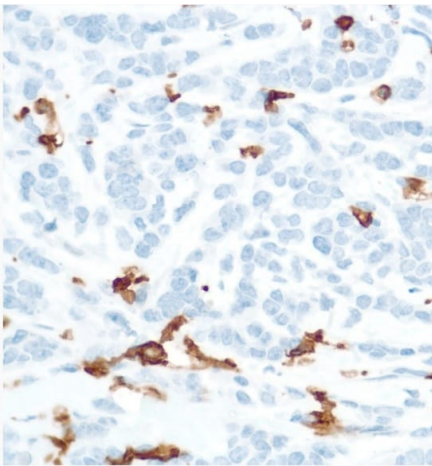
This data was developed using the same antibody clone in a different buffer formulation containing PBS, BSA and sodium azide (**ab183354**).



Immunohistochemistry (Formalin/PFA-fixed paraffin-embedded sections) - Anti-CD16 antibody [SP175] - BSA and Azide free (ab243925)

Immunohistochemical analysis of paraffin embedded human lung adenocarcinoma tissue labeling CD16 with **ab183354** at 1/100 dilution.

This data was developed using the same antibody clone in a different buffer formulation containing PBS, BSA and sodium azide (**ab183354**).



Immunohistochemistry (Formalin/PFA-fixed paraffin-embedded sections) - Anti-CD16 antibody [SP175] - BSA and Azide free (ab243925)

Immunohistochemical analysis of paraffin embedded human pancreatic adenocarcinoma tissue labeling CD16 with **ab183354** at 1/100 dilution.

This data was developed using the same antibody clone in a different buffer formulation containing PBS, BSA and sodium azide (**ab183354**).

Why choose a recombinant antibody?



Research with confidence
Consistent and reproducible results



Long-term and scalable supply
Recombinant technology



Success from the first experiment
Confirmed specificity



Ethical standards compliant
Animal-free production

Anti-CD16 antibody [SP175] - BSA and Azide free
(ab243925)

Please note: All products are "FOR RESEARCH USE ONLY. NOT FOR USE IN DIAGNOSTIC PROCEDURES"

Our Abpromise to you: Quality guaranteed and expert technical support

- Replacement or refund for products not performing as stated on the datasheet
- Valid for 12 months from date of delivery
- Response to your inquiry within 24 hours
- We provide support in Chinese, English, French, German, Japanese and Spanish
- Extensive multi-media technical resources to help you
- We investigate all quality concerns to ensure our products perform to the highest standards

If the product does not perform as described on this datasheet, we will offer a refund or replacement. For full details of the Abpromise, please visit <https://www.abcam.com/abpromise> or contact our technical team.

Terms and conditions

- Guarantee only valid for products bought direct from Abcam or one of our authorized distributors