

## Product datasheet

# Anti-CD160 antibody [CNX46-3] ab91101

[1 References](#) [1 Image](#)

### Overview

<b>Product name</b>	Anti-CD160 antibody [CNX46-3]
<b>Description</b>	Rat monoclonal [CNX46-3] to CD160
<b>Host species</b>	Rat
<b>Tested applications</b>	<b>Suitable for:</b> Flow Cyt
<b>Species reactivity</b>	<b>Reacts with:</b> Mouse
<b>Immunogen</b>	Recombinant Mouse CD160-Fc protein
<b>Positive control</b>	Flow Cyt: Mouse (C57BL/6) splenocytes
<b>General notes</b>	<p>The Life Science industry has been in the grips of a reproducibility crisis for a number of years. Abcam is leading the way in addressing this with our range of recombinant monoclonal antibodies and knockout edited cell lines for gold-standard validation. Please check that this product meets your needs before purchasing.</p> <p>If you have any questions, special requirements or concerns, please send us an inquiry and/or contact our Support team ahead of purchase. Recommended alternatives for this product can be found below, along with publications, customer reviews and Q&amp;As</p>

### Properties

<b>Form</b>	Liquid
<b>Storage instructions</b>	Shipped at 4°C. Store at +4°C short term (1-2 weeks). Store at -20°C or -80°C. Avoid freeze / thaw cycle.
<b>Storage buffer</b>	<p>pH: 7.20</p> <p>Preservative: 0.09% Sodium azide</p> <p>Constituent: PBS</p>
<b>Purity</b>	Protein A purified
<b>Clonality</b>	Monoclonal
<b>Clone number</b>	CNX46-3
<b>Isotype</b>	IgG2a
<b>Light chain type</b>	kappa

### Applications

## Applications

### The Abpromise guarantee

Our **Abpromise guarantee** covers the use of ab91101 in the following tested applications.

The application notes include recommended starting dilutions; optimal dilutions/concentrations should be determined by the end user.

Application	Abreviews	Notes
Flow Cyt		Use at an assay dependent concentration. 1 µg/test

## Target

### Function

Receptor showing broad specificity for both classical and non-classical MHC class I molecules.

### Tissue specificity

Expressed in spleen, peripheral blood, and small intestine. Expression is restricted to functional NK and T cytotoxic lymphocytes.

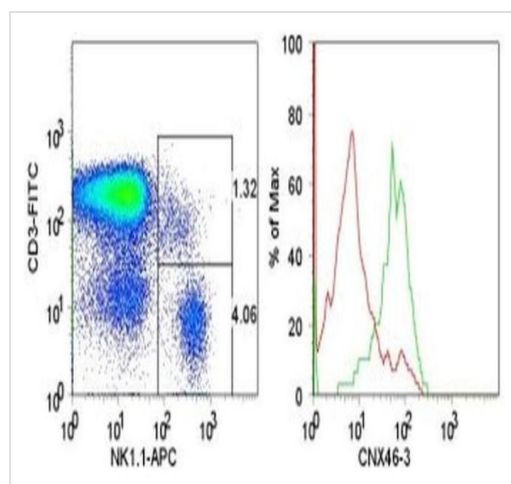
### Sequence similarities

Contains 1 Ig-like V-type (immunoglobulin-like) domain.

### Cellular localization

Cell membrane.

## Images



Flow cytometry analysis of C57BL/6 splenocytes labelling CD160 with ab91101 at 0.5 µg, followed by F(ab')<sub>2</sub> Anti-Rat IgG PE and subsequently with anti-Mouse CD3e FITC and anti-Mouse NK1-1 APC. The histogram (right) demonstrates staining of **ab911001** on NK1-1+CD3<sup>+</sup> cells (red histogram) and NK1-1+CD3<sup>+</sup> cells (green histogram), as gated in the dot plot (left).

Flow Cytometry - Anti-CD160 antibody [CNX46-3]  
(ab91101)

**Please note:** All products are "FOR RESEARCH USE ONLY. NOT FOR USE IN DIAGNOSTIC PROCEDURES"

## Our Abpromise to you: Quality guaranteed and expert technical support

- Replacement or refund for products not performing as stated on the datasheet
- Valid for 12 months from date of delivery
- Response to your inquiry within 24 hours
- We provide support in Chinese, English, French, German, Japanese and Spanish
- Extensive multi-media technical resources to help you

- We investigate all quality concerns to ensure our products perform to the highest standards

If the product does not perform as described on this datasheet, we will offer a refund or replacement. For full details of the Abpromise, please visit <https://www.abcam.com/abpromise> or contact our technical team.

#### **Terms and conditions**

---

- Guarantee only valid for products bought direct from Abcam or one of our authorized distributors