



Product datasheet

Anti-CD161 antibody [4C6A11] ab233785

3 Images

Overview

Product name	Anti-CD161 antibody [4C6A11]
Description	Mouse monoclonal [4C6A11] to CD161
Host species	Mouse
Tested applications	Suitable for: Flow Cyt, WB
Species reactivity	Reacts with: Human
Immunogen	Recombinant fragment corresponding to Human CD161 aa 50 to the C-terminus. (Expressed in E.coli). Database link: Q12918
	 Run BLAST with  Run BLAST with
Positive control	WB: Recombinant human CD161 (AA: extra 67-225) protein and CD161 (AA: extra 67-225)-hlgGfc transfected HEK-293 whole cell lysate. Flow Cyt: Raji cells.
General notes	<p>The Life Science industry has been in the grips of a reproducibility crisis for a number of years. Abcam is leading the way in addressing this with our range of recombinant monoclonal antibodies and knockout edited cell lines for gold-standard validation. Please check that this product meets your needs before purchasing.</p> <p>If you have any questions, special requirements or concerns, please send us an inquiry and/or contact our Support team ahead of purchase. Recommended alternatives for this product can be found below, along with publications, customer reviews and Q&As</p>

Properties

Form	Liquid
Storage instructions	Shipped at 4°C. Store at +4°C short term (1-2 weeks). Upon delivery aliquot. Store at -20°C long term. Avoid freeze / thaw cycle.
Storage buffer	Preservative: 0.05% Sodium azide Constituent: PBS
Purity	Protein G purified
Purification notes	Purified from tissue culture supernatant.
Clonality	Monoclonal
Clone number	4C6A11
Isotype	IgG2b

Applications

The Abpromise guarantee

Our **Abpromise guarantee** covers the use of ab233785 in the following tested applications.

The application notes include recommended starting dilutions; optimal dilutions/concentrations should be determined by the end user.

Application	Abreviews	Notes
Flow Cyt		1/200 - 1/400.
WB		1/500 - 1/2000.

Target

Function

Plays an inhibitory role on natural killer (NK) cells cytotoxicity. Activation results in specific acid sphingomyelinase/SMPD1 stimulation with subsequent marked elevation of intracellular ceramide. Activation also leads to AKT1/PKB and RPS6KA1/RSK1 kinases stimulation as well as markedly enhanced T-cell proliferation induced by anti-CD3. Acts as a lectin that binds to the terminal carbohydrate Gal-alpha(1,3)Gal epitope as well as to the N-acetyllactosamine epitope. Binds also to CLEC2D/LLT1 as a ligand and inhibits NK cell-mediated cytotoxicity as well as interferon-gamma secretion in target cells.

Tissue specificity

Expressed in a subset of NK cells predominantly in intestinal epithelium and liver. Detected in peripheral blood T-cells and preferentially in adult T-cells with a memory antigenic phenotype.

Sequence similarities

Contains 1 C-type lectin domain.

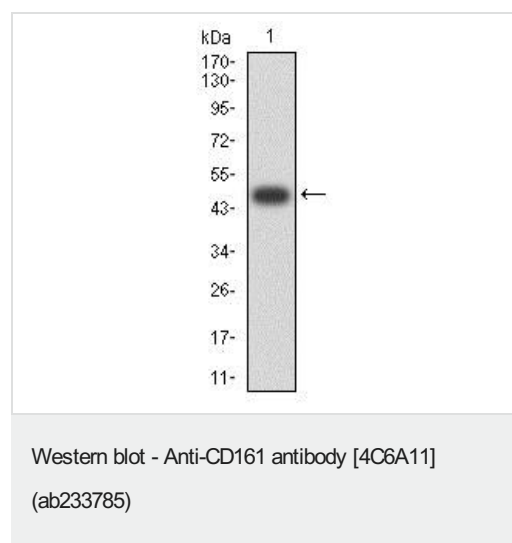
Post-translational modifications

N-glycosylated. Contains sialic acid residues.

Cellular localization

Membrane.

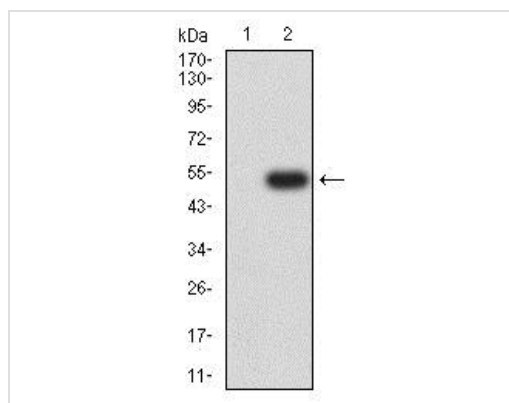
Images



Anti-CD161 antibody [4C6A11] (ab233785) at 1/500 dilution +
Recombinant human CD161 (AA: extra 67-225) protein

Developed using the ECL technique.

Expected MW is 48.4 kDa.



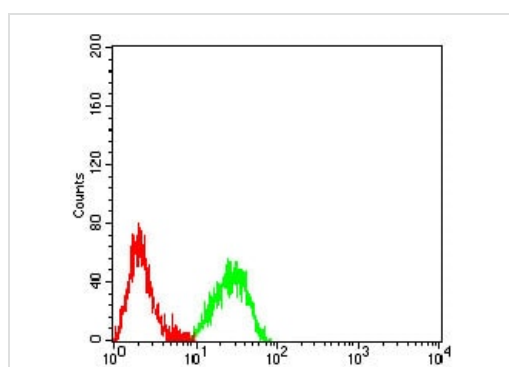
Western blot - Anti-CD161 antibody [4C6A11]
(ab233785)

All lanes : Anti-CD161 antibody [4C6A11] (ab233785) at 1/500 dilution

Lane 1 : HEK-293 (human epithelial cell line from embryonic kidney) whole cell lysate

Lane 2 : CD161 (AA: extra 67-225)-hlgGFc transfected HEK-293 whole cell lysate

Developed using the ECL technique.



Flow Cytometry - Anti-CD161 antibody [4C6A11]
(ab233785)

Flow cytometric analysis of Raji (human Burkitt's lymphoma cell line) cells labeling CD161 with ab233785 at 1/200 dilution (green) compared with a negative control (red).

Please note: All products are "FOR RESEARCH USE ONLY. NOT FOR USE IN DIAGNOSTIC PROCEDURES"

Our Abpromise to you: Quality guaranteed and expert technical support

- Replacement or refund for products not performing as stated on the datasheet
- Valid for 12 months from date of delivery
- Response to your inquiry within 24 hours
- We provide support in Chinese, English, French, German, Japanese and Spanish
- Extensive multi-media technical resources to help you
- We investigate all quality concerns to ensure our products perform to the highest standards

If the product does not perform as described on this datasheet, we will offer a refund or replacement. For full details of the Abpromise, please visit <https://www.abcam.com/abpromise> or contact our technical team.

Terms and conditions

- Guarantee only valid for products bought direct from Abcam or one of our authorized distributors