

Product datasheet

Anti-CD16a antibody [SP189] - C-terminal, prediluted ab228278

Recombinant RabMAb

[12 Images](#)

Overview

Product name	Anti-CD16a antibody [SP189] - C-terminal, prediluted
Description	Rabbit monoclonal [SP189] to CD16a - C-terminal, prediluted
Host species	Rabbit
Tested applications	Suitable for: IHC-P
Species reactivity	Reacts with: Human
Immunogen	Synthetic peptide. This information is proprietary to Abcam and/or its suppliers.
Positive control	IHC-P: Human lung, liver, thymus, placenta, spleen, liver hepatocellular carcinoma, B-cell lymphoma, cervical squamous cell carcinoma, colon adenocarcinoma, stomach adenocarcinoma and Hodgkin's lymphoma tissues.
General notes	This product is FOR RESEARCH USE ONLY. For commercial use, please contact partnerships@abcam.com.

Properties

Form	Liquid
Storage instructions	Shipped at 4°C. Store at +4°C. Do Not Freeze.
Storage buffer	pH: 7.60 Preservative: 0.1% Sodium azide Constituents: Tris buffered saline, 1% BSA
Purity	Protein A/G purified
Purification notes	Purified from TCS by protein A/G.
Clonality	Monoclonal
Clone number	SP189
Isotype	IgG

Applications

The Abpromise guarantee

Our **Abpromise guarantee** covers the use of ab228278 in the following tested applications.

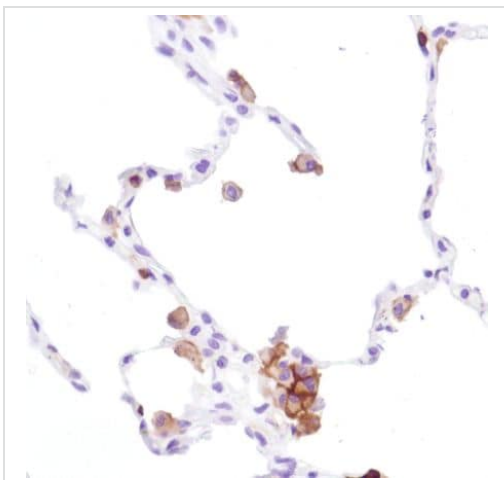
The application notes include recommended starting dilutions; optimal dilutions/concentrations should be determined by the end user.

Application	Abreviews	Notes
IHC-P		1/1. Ready to use. Boil tissue section in EDTA buffer, pH 8.0 for 10 minutes followed by cooling at room temperature for 20 minutes. Primary antibody incubation for 10 minutes at room temperature.

Target

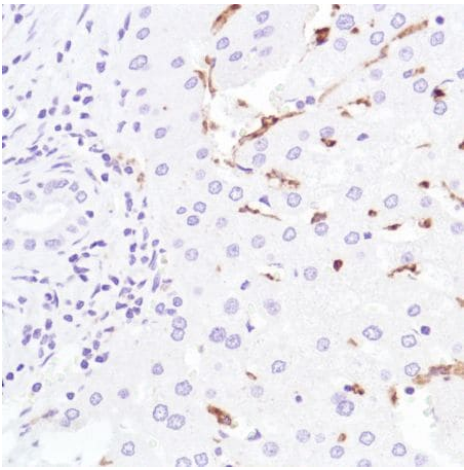
Function	Receptor for the Fc region of IgG. Binds complexed or aggregated IgG and also monomeric IgG. Mediates antibody-dependent cellular cytotoxicity (ADCC) and other antibody-dependent responses, such as phagocytosis.
Tissue specificity	Expressed on natural killer cells, macrophages, subpopulation of T-cells, immature thymocytes and placental trophoblasts.
Involvement in disease	Immunodeficiency 20
Sequence similarities	Contains 2 Ig-like C2-type (immunoglobulin-like) domains.
Post-translational modifications	Glycosylated. Contains high mannose- and complex-type oligosaccharides. Glycosylation at Asn-180 is mandatory for high affinity binding to the Fc and for discrimination between fucosylated and afucosylated IgG glycoforms. The soluble form is produced by a proteolytic cleavage.
Cellular localization	Cell membrane. Secreted. Exists also as a soluble receptor.

Images



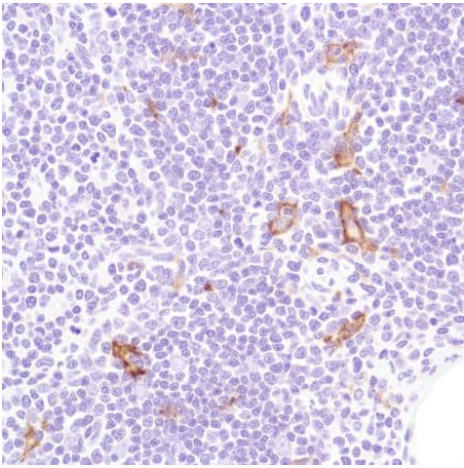
Formalin-fixed, paraffin-embedded human lung tissue stained for CD16 using ab228278 in immunohistochemical analysis.

Immunohistochemistry (Formalin/PFA-fixed paraffin-embedded sections) - Anti-CD16a antibody [SP189]
- C-terminal, prediluted (ab228278)



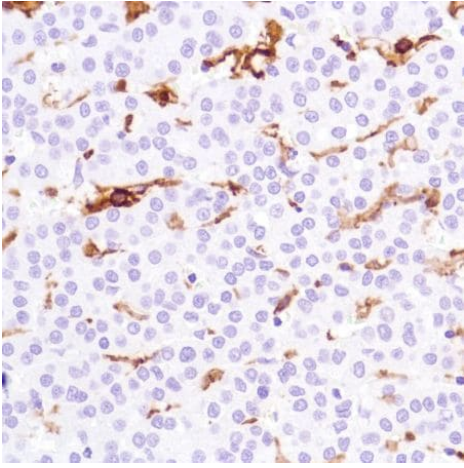
Formalin-fixed, paraffin-embedded human liver tissue stained for CD16 using ab228278 in immunohistochemical analysis.

Immunohistochemistry (Formalin/PFA-fixed paraffin-embedded sections) - Anti-CD16a antibody [SP189]
- C-terminal, prediluted (ab228278)



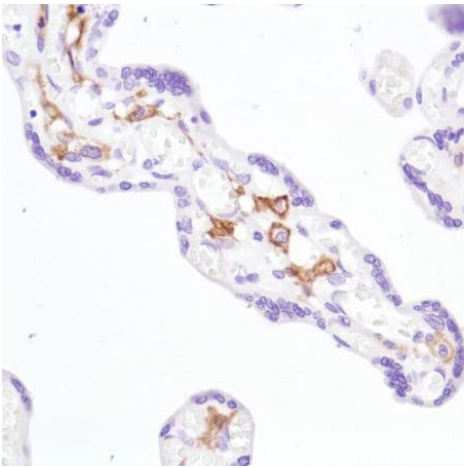
Formalin-fixed, paraffin-embedded human thymus tissue stained for CD16 using ab228278 in immunohistochemical analysis.

Immunohistochemistry (Formalin/PFA-fixed paraffin-embedded sections) - Anti-CD16a antibody [SP189]
- C-terminal, prediluted (ab228278)



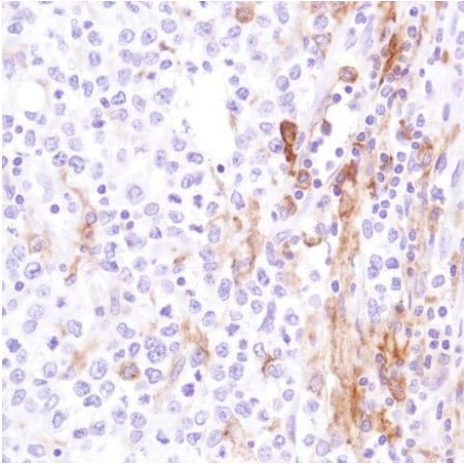
Formalin-fixed, paraffin-embedded human liver hepatocellular carcinoma tissue stained for CD16 using ab228278 in immunohistochemical analysis.

Immunohistochemistry (Formalin/PFA-fixed paraffin-embedded sections) - Anti-CD16a antibody [SP189]
- C-terminal, prediluted (ab228278)



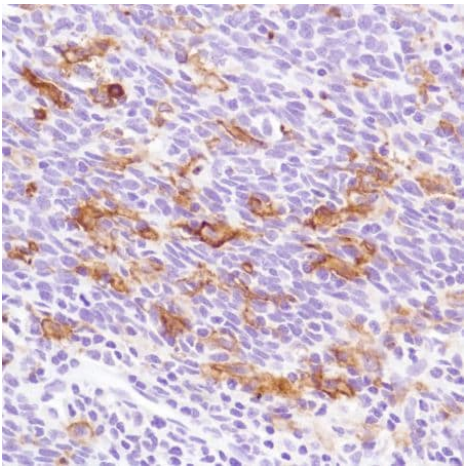
Formalin-fixed, paraffin-embedded human placenta tissue stained for CD16 using ab228278 in immunohistochemical analysis.

Immunohistochemistry (Formalin/PFA-fixed paraffin-embedded sections) - Anti-CD16a antibody [SP189]
- C-terminal, prediluted (ab228278)



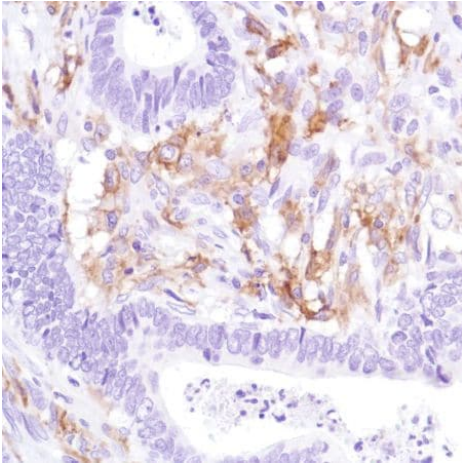
Formalin-fixed, paraffin-embedded human B-cell lymphoma tissue stained for CD16 using ab228278 in immunohistochemical analysis.

Immunohistochemistry (Formalin/PFA-fixed paraffin-embedded sections) - Anti-CD16a antibody [SP189]
- C-terminal, prediluted (ab228278)



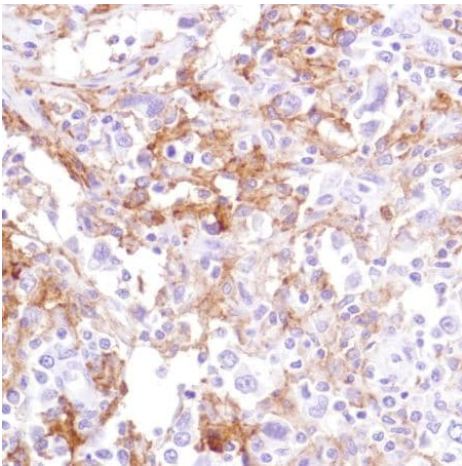
Formalin-fixed, paraffin-embedded human cervical squamous cell carcinoma tissue stained for CD16 using ab228278 in immunohistochemical analysis.

Immunohistochemistry (Formalin/PFA-fixed paraffin-embedded sections) - Anti-CD16a antibody [SP189]
- C-terminal, prediluted (ab228278)



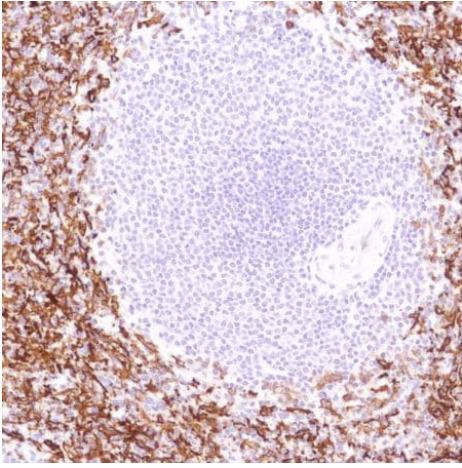
Formalin-fixed, paraffin-embedded human colon adenocarcinoma tissue stained for CD16 using ab228278 in immunohistochemical analysis.

Immunohistochemistry (Formalin/PFA-fixed paraffin-embedded sections) - Anti-CD16a antibody [SP189]
- C-terminal, prediluted (ab228278)



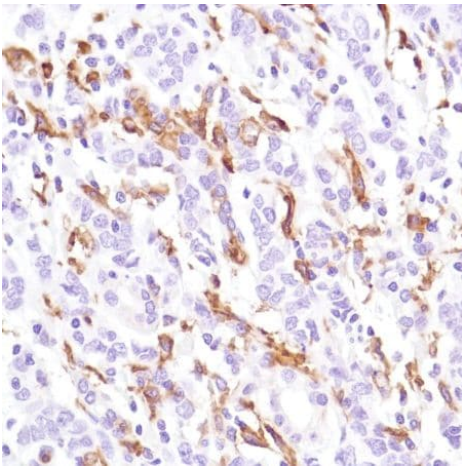
Formalin-fixed, paraffin-embedded human Hodgkin's lymphoma tissue stained for CD16 using ab228278 in immunohistochemical analysis.

Immunohistochemistry (Formalin/PFA-fixed paraffin-embedded sections) - Anti-CD16a antibody [SP189]
- C-terminal, prediluted (ab228278)



Formalin-fixed, paraffin-embedded human spleen tissue stained for CD16 using ab228278 in immunohistochemical analysis.

Immunohistochemistry (Formalin/PFA-fixed paraffin-embedded sections) - Anti-CD16a antibody [SP189]
- C-terminal, prediluted (ab228278)



Formalin-fixed, paraffin-embedded human stomach adenocarcinoma tissue stained for CD16 using ab228278 in immunohistochemical analysis.

Immunohistochemistry (Formalin/PFA-fixed paraffin-embedded sections) - Anti-CD16a antibody [SP189]
- C-terminal, prediluted (ab228278)

Why choose a recombinant antibody?



Research with confidence
Consistent and reproducible results



Long-term and scalable supply
Recombinant technology



Success from the first experiment
Confirmed specificity



Ethical standards compliant
Animal-free production

Anti-CD16a antibody [SP189] - C-terminal,
prediluted (ab228278)

Please note: All products are "FOR RESEARCH USE ONLY. NOT FOR USE IN DIAGNOSTIC PROCEDURES"

Our Abpromise to you: Quality guaranteed and expert technical support

- Replacement or refund for products not performing as stated on the datasheet
- Valid for 12 months from date of delivery
- Response to your inquiry within 24 hours
- We provide support in Chinese, English, French, German, Japanese and Spanish
- Extensive multi-media technical resources to help you
- We investigate all quality concerns to ensure our products perform to the highest standards

If the product does not perform as described on this datasheet, we will offer a refund or replacement. For full details of the Abpromise, please visit <https://www.abcam.com/abpromise> or contact our technical team.

Terms and conditions

- Guarantee only valid for products bought direct from Abcam or one of our authorized distributors