

Product datasheet

Anti-CD16b antibody [MM0272-5L11] ab89207

[2 Images](#)

Overview

Product name	Anti-CD16b antibody [MM0272-5L11]
Description	Mouse monoclonal [MM0272-5L11] to CD16b
Host species	Mouse
Specificity	In recent direct ELISA testing, we found that this antibody cross-reacts ~50% with Human Fc gamma RIIIA/CD16a.
Tested applications	Suitable for: Flow Cyt, WB
Species reactivity	Reacts with: Human
Immunogen	Human recombinant CD16b extracellular domain.
Positive control	WB: Human placenta and embryonic tissue lysates.
General notes	<p>Reconstituted antibody should be aliquoted and can be stored frozen at < -20°C for at least for six months without detectable loss of activity. Avoid repeated freeze-thaw cycles.</p> <p>The Life Science industry has been in the grips of a reproducibility crisis for a number of years. Abcam is leading the way in addressing this with our range of recombinant monoclonal antibodies and knockout edited cell lines for gold-standard validation. Please check that this product meets your needs before purchasing.</p> <p>If you have any questions, special requirements or concerns, please send us an inquiry and/or contact our Support team ahead of purchase. Recommended alternatives for this product can be found below, along with publications, customer reviews and Q&As</p>

Properties

Form	Lyophilized:Reconstitute the antibody with 200 µl sterile PBS to give a final concentration of 0.5mg/ml.
Storage instructions	Shipped at 4°C. Store at -80°C.
Storage buffer	Constituent: PBS
Purity	Protein G purified
Purification notes	The IgG fraction of culture supernatant was purified by Protein G affinity chromatography.
Clonality	Monoclonal
Clone number	MM0272-5L11
Isotype	IgG2

Applications

The Abpromise guarantee

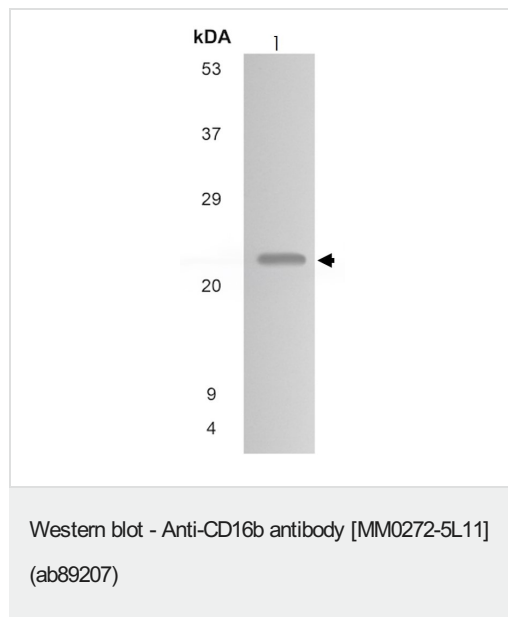
Our **Abpromise guarantee** covers the use of ab89207 in the following tested applications.

The application notes include recommended starting dilutions; optimal dilutions/concentrations should be determined by the end user.

Application	Abreviews	Notes
Flow Cyt		Use at an assay dependent concentration. ab18414 - Mouse monoclonal IgG2a, is suitable for use as an isotype control with this antibody.
WB		1/500 - 1/1000. Predicted molecular weight: 26 kDa.

Target

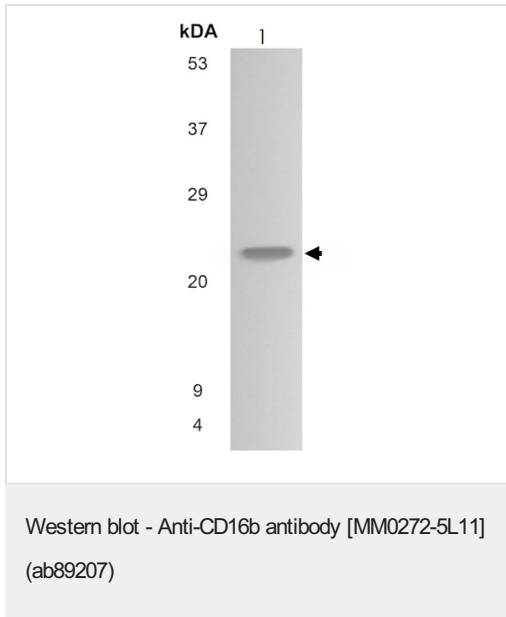
Images



Anti-CD16b antibody [MM0272-5L11] (ab89207) at 1/500 dilution + Human placenta tissue lysate

Predicted band size: 26 kDa

Observed band size: 23 kDa



Anti-CD16b antibody [MM0272-5L11] (ab89207) at 1/500 dilution +
Human embryonic tissue lysate

Predicted band size: 26 kDa

Observed band size: 23 kDa

Please note: All products are "FOR RESEARCH USE ONLY. NOT FOR USE IN DIAGNOSTIC PROCEDURES"

Our Abpromise to you: Quality guaranteed and expert technical support

- Replacement or refund for products not performing as stated on the datasheet
- Valid for 12 months from date of delivery
- Response to your inquiry within 24 hours
- We provide support in Chinese, English, French, German, Japanese and Spanish
- Extensive multi-media technical resources to help you
- We investigate all quality concerns to ensure our products perform to the highest standards

If the product does not perform as described on this datasheet, we will offer a refund or replacement. For full details of the Abpromise, please visit <https://www.abcam.com/abpromise> or contact our technical team.

Terms and conditions

- Guarantee only valid for products bought direct from Abcam or one of our authorized distributors