

Product datasheet

Anti-CD1a antibody [L21-A] ab136922

[1 Image](#)

Overview

Product name	Anti-CD1a antibody [L21-A]
Description	Rabbit monoclonal [L21-A] to CD1a
Host species	Rabbit
Tested applications	Suitable for: IHC-P
Species reactivity	Reacts with: Human
Immunogen	Synthetic peptide derived from the C-terminal region, near the transmembrane domain, of Human CD1a (P06126).
Epitope	Antibody recognizes the epitope located between Gly240 - Ala256
Positive control	Human skin tissue.
General notes	<p>The Life Science industry has been in the grips of a reproducibility crisis for a number of years. Abcam is leading the way in addressing this with our range of recombinant monoclonal antibodies and knockout edited cell lines for gold-standard validation. Please check that this product meets your needs before purchasing.</p> <p>If you have any questions, special requirements or concerns, please send us an inquiry and/or contact our Support team ahead of purchase. Recommended alternatives for this product can be found below, along with publications, customer reviews and Q&As</p>

Properties

Form	Liquid
Storage instructions	Shipped at 4°C. Store at +4°C short term (1-2 weeks). Store at -20°C or -80°C. Avoid freeze / thaw cycle.
Storage buffer	pH: 8.00 Preservative: 0.05% Sodium azide Constituents: 0.32% Tris HCl, 2% BSA
Purification notes	This immunoglobulin is the product of one single B-cell line from the crude anti-peptide polyclonal anti-serum. This antibody is purified using a proprietary technique and offers a completely post-translationally modified and properly glycosylated antibody. This offers increased stability.
Clonality	Monoclonal
Clone number	L21-A

Isotype IgG

Applications

The Abpromise guarantee Our **Abpromise guarantee** covers the use of ab136922 in the following tested applications. The application notes include recommended starting dilutions; optimal dilutions/concentrations should be determined by the end user.

Application	Abreviews	Notes
IHC-P		1/100 - 1/200. Perform heat mediated antigen retrieval with citrate buffer pH 6 before commencing with IHC staining protocol.

Target

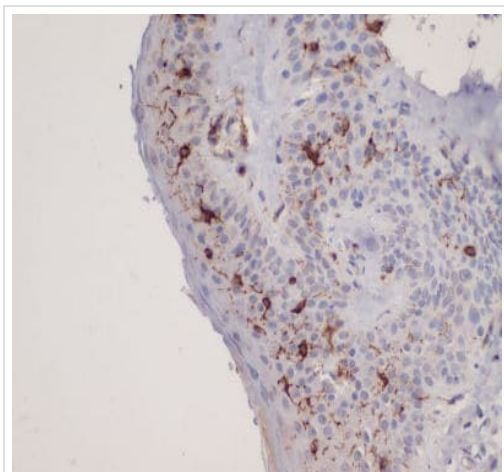
Function Antigen-presenting protein that binds self and non-self lipid and glycolipid antigens and presents them to T-cell receptors on natural killer T-cells.

Tissue specificity Expressed on cortical thymocytes, epidermal Langerhans cells, dendritic cells, on certain T-cell leukemias, and in various other tissues.

Sequence similarities Contains 1 Ig-like (immunoglobulin-like) domain.

Cellular localization Cell membrane. Endosome membrane. Subject to intracellular trafficking between the cell membrane and endosomes. Localizes to cell surface lipid rafts.

Images



Immunohistochemical analysis of formalin-fixed, paraffin-embedded Human skin tissue (4µm) labelling CD1a with ab136922 at 1/100 dilution.

Immunohistochemistry (Formalin/PFA-fixed paraffin-embedded sections) - Anti-CD1a antibody [L21-A] (ab136922)

Please note: All products are "FOR RESEARCH USE ONLY. NOT FOR USE IN DIAGNOSTIC PROCEDURES"

Our Abpromise to you: Quality guaranteed and expert technical support

- Replacement or refund for products not performing as stated on the datasheet
- Valid for 12 months from date of delivery
- Response to your inquiry within 24 hours

- We provide support in Chinese, English, French, German, Japanese and Spanish
- Extensive multi-media technical resources to help you
- We investigate all quality concerns to ensure our products perform to the highest standards

If the product does not perform as described on this datasheet, we will offer a refund or replacement. For full details of the Abpromise, please visit <https://www.abcam.com/abpromise> or contact our technical team.

Terms and conditions

- Guarantee only valid for products bought direct from Abcam or one of our authorized distributors