

## Product datasheet

# Anti-CD1a antibody [rC1A/711] - BSA and Azide free ab237936

Recombinant

3 Images

### Overview

<b>Product name</b>	Anti-CD1a antibody [rC1A/711] - BSA and Azide free
<b>Description</b>	Mouse monoclonal [rC1A/711] to CD1a - BSA and Azide free
<b>Host species</b>	Mouse
<b>Tested applications</b>	<b>Suitable for:</b> IHC-P
<b>Species reactivity</b>	<b>Reacts with:</b> Human
<b>Immunogen</b>	Recombinant full length protein corresponding to Human CD1a. Database link: <b>P06126</b>
<b>Positive control</b>	IHC-P: Human skin tissue.

### Properties

<b>Form</b>	Liquid
<b>Storage instructions</b>	Shipped at 4°C. Store at +4°C short term (1-2 weeks). Upon delivery aliquot. Store at -20°C long term. Avoid freeze / thaw cycle.
<b>Storage buffer</b>	pH: 7.2 Constituent: PBS
<b>Carrier free</b>	Yes
<b>Purity</b>	Protein A/G purified
<b>Purification notes</b>	Purified from Bioreactor Concentrate by Protein A/G.
<b>Clonality</b>	Monoclonal
<b>Clone number</b>	rC1A/711
<b>Isotype</b>	IgG1
<b>Light chain type</b>	kappa

### Applications

The Abpromise guarantee

Our **Abpromise guarantee** covers the use of ab237936 in the following tested applications.

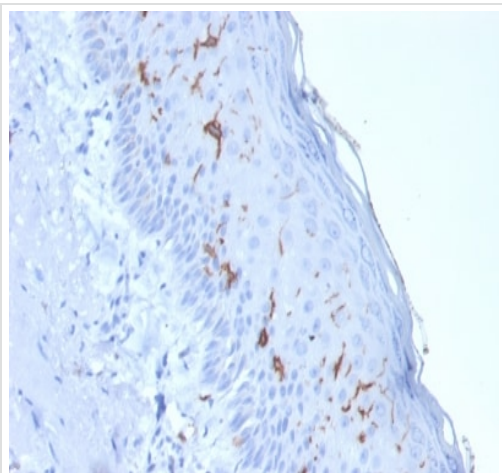
The application notes include recommended starting dilutions; optimal dilutions/concentrations should be determined by the end user.

Application	Abreviews	Notes
IHC-P		Use a concentration of 0.5 - 1 µg/ml. Perform heat mediated antigen retrieval with citrate buffer pH 6 before commencing with IHC staining protocol. Primary incubation for 30 minutes at room temperature.

## Target

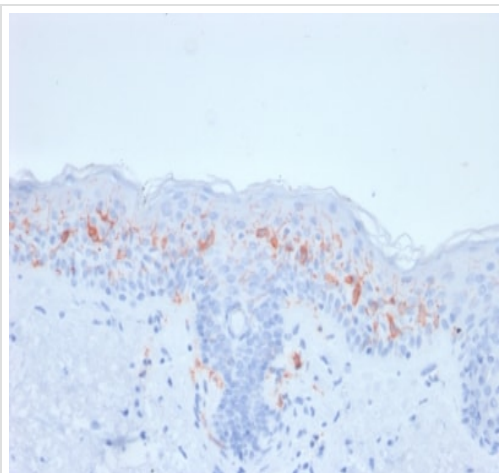
Function	Antigen-presenting protein that binds self and non-self lipid and glycolipid antigens and presents them to T-cell receptors on natural killer T-cells.
Tissue specificity	Expressed on cortical thymocytes, epidermal Langerhans cells, dendritic cells, on certain T-cell leukemias, and in various other tissues.
Sequence similarities	Contains 1 Ig-like (immunoglobulin-like) domain.
Cellular localization	Cell membrane. Endosome membrane. Subject to intracellular trafficking between the cell membrane and endosomes. Localizes to cell surface lipid rafts.

## Images



Formalin-fixed, paraffin-embedded human skin tissue stained for CD1a using ab237936 at 1 µg/ml in immunohistochemical analysis.

Immunohistochemistry (Formalin/PFA-fixed paraffin-embedded sections) - Anti-CD1a antibody  
[rC1A/711] - BSA and Azide free (ab237936)



Formalin-fixed, paraffin-embedded human skin tissue stained for CD1a using ab237936 at 1 µg/ml in immunohistochemical analysis.

Immunohistochemistry (Formalin/PFA-fixed paraffin-embedded sections) - Anti-CD1a antibody  
[rC1A/711] - BSA and Azide free (ab237936)

#### Why choose a recombinant antibody?



**Research with confidence**  
Consistent and reproducible results



**Long-term and scalable supply**  
Recombinant technology



**Success from the first experiment**  
Confirmed specificity



**Ethical standards compliant**  
Animal-free production

Anti-CD1a antibody [rC1A/711] - BSA and Azide free  
(ab237936)

**Please note:** All products are "FOR RESEARCH USE ONLY. NOT FOR USE IN DIAGNOSTIC PROCEDURES"

#### Our Abpromise to you: Quality guaranteed and expert technical support

- Replacement or refund for products not performing as stated on the datasheet
- Valid for 12 months from date of delivery

- Response to your inquiry within 24 hours
- We provide support in Chinese, English, French, German, Japanese and Spanish
- Extensive multi-media technical resources to help you
- We investigate all quality concerns to ensure our products perform to the highest standards

If the product does not perform as described on this datasheet, we will offer a refund or replacement. For full details of the Abpromise, please visit <https://www.abcam.com/abpromise> or contact our technical team.

#### **Terms and conditions**

---

- Guarantee only valid for products bought direct from Abcam or one of our authorized distributors