

## Product datasheet

### Anti-CD1c antibody [OT12F4] ab156708

★★★★★ [4 Abreviews](#) [10 References](#) [4 Images](#)

#### Overview

<b>Product name</b>	Anti-CD1c antibody [OT12F4]
<b>Description</b>	Mouse monoclonal [OT12F4] to CD1c
<b>Host species</b>	Mouse
<b>Tested applications</b>	<b>Suitable for:</b> WB, IHC-P
<b>Species reactivity</b>	<b>Reacts with:</b> Human
<b>Immunogen</b>	Recombinant full length protein corresponding to CD1c. produced in HEK293T cell
<b>General notes</b>	<p>The clone number has been updated from 2F4 to OT12F4, both clone numbers name the same clone.</p> <p>This product was changed from ascites to tissue culture supernatant on 29<sup>th</sup> May 2018. Please note that the dilutions may need to be adjusted accordingly. If you have any questions, please do not hesitate to contact our scientific support team.</p> <p>The Life Science industry has been in the grips of a reproducibility crisis for a number of years. Abcam is leading the way in addressing this with our range of recombinant monoclonal antibodies and knockout edited cell lines for gold-standard validation. Please check that this product meets your needs before purchasing.</p> <p>If you have any questions, special requirements or concerns, please send us an inquiry and/or contact our Support team ahead of purchase. Recommended alternatives for this product can be found below, along with publications, customer reviews and Q&amp;As</p>

#### Properties

<b>Form</b>	Liquid
<b>Storage instructions</b>	Shipped at 4°C. Upon delivery aliquot and store at -20°C. Avoid freeze / thaw cycles.
<b>Storage buffer</b>	<p>pH: 7.30</p> <p>Preservative: 0.02% Sodium azide</p> <p>Constituents: PBS, 1% BSA, 50% Glycerol</p>
<b>Purity</b>	Protein G purified
<b>Purification notes</b>	Purified from TCS
<b>Clonality</b>	Monoclonal
<b>Clone number</b>	OT12F4

Isotype

IgG1

## Applications

### The Abpromise guarantee

Our **Abpromise guarantee** covers the use of ab156708 in the following tested applications.

The application notes include recommended starting dilutions; optimal dilutions/concentrations should be determined by the end user.

Application	Abreviews	Notes
WB		1/2000. Predicted molecular weight: 38 kDa.
IHC-P	★★★★★ (4)	1/150.

## Target

### Function

Antigen-presenting protein that binds self and non-self lipid and glycolipid antigens and presents them to T-cell receptors on natural killer T-cells.

### Tissue specificity

Expressed on cortical thymocytes, on certain T-cell leukemias, and in various other tissues.

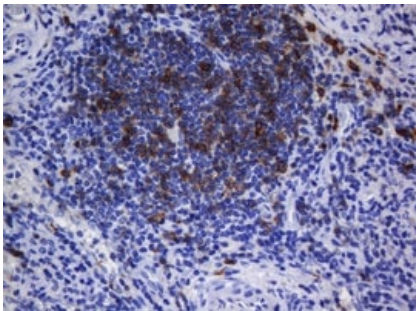
### Sequence similarities

Contains 1 Ig-like (immunoglobulin-like) domain.

### Cellular localization

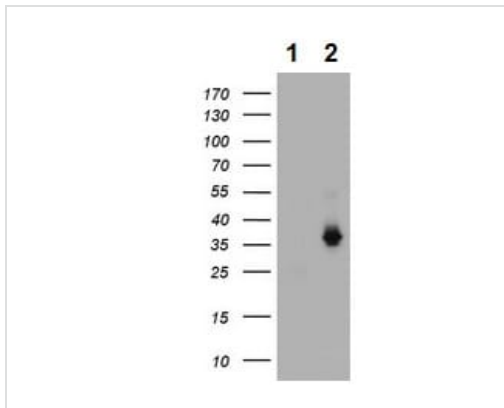
Cell membrane. Endosome membrane. Subject to intracellular trafficking between the cell membrane and endosomes.

## Images



Immunohistochemical staining of paraffin-embedded Human lymph node tissue using anti-CD1C mouse monoclonal antibody(ab156708)

Immunohistochemistry (Formalin/PFA-fixed paraffin-embedded sections) - Anti-CD1c antibody [OT12F4] (ab156708)



Western blot - Anti-CD1c antibody [OT12F4]  
(ab156708)

**All lanes :** Anti-CD1c antibody [OT12F4] (ab156708)

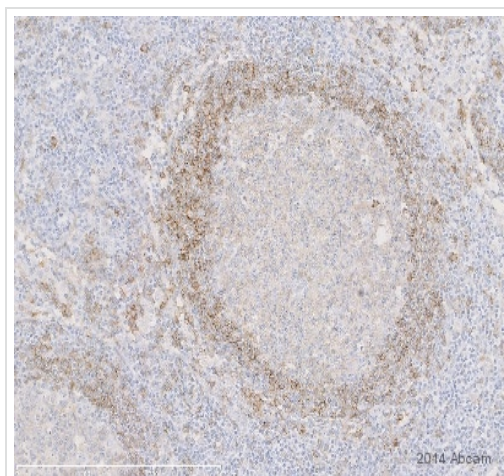
**Lane 1 :** HEK293T cells were transfected with the pCMV6-ENTRY

**Lane 2 :** HEK293T cells were transfected with pCMV6-ENTRY  
CD1C

Lysates/proteins at 5 µg per lane.

**Predicted band size:** 38 kDa

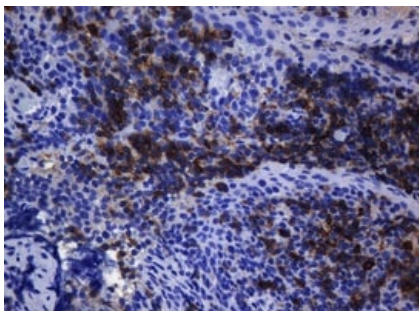
HEK293T cell lysates were generated from transient transfection of  
the cDNA clone (RC211378)



Immunohistochemistry (Formalin/PFA-fixed paraffin-  
embedded sections) - Anti-CD1c antibody [OT12F4]  
(ab156708)

This image is courtesy of an Abreview submitted by  
Jing Ma

ab156708 staining MAFA in Cynomolgus monkey lymph  
node sections by Immunohistochemistry (IHC-P -  
paraformaldehyde-fixed, paraffin-embedded sections). Tissue was  
fixed with formaldehyde and blocked with 10% donkey serum for 20  
minutes at room temperature; antigen retrieval was by heat  
mediation. Samples were incubated with primary antibody (1/50)  
for 30 minutes at room temperature. A Biotin-conjugated Donkey  
anti-mouse IgG polyclonal (1/2000) was used as the secondary  
antibody.



Immunohistochemical staining of paraffin-embedded Human tonsil using anti-CD1C mouse monoclonal antibody. (ab156708)

Immunohistochemistry (Formalin/PFA-fixed paraffin-embedded sections) - Anti-CD1c antibody [OT12F4] (ab156708)

**Please note:** All products are "FOR RESEARCH USE ONLY. NOT FOR USE IN DIAGNOSTIC PROCEDURES"

#### Our Abpromise to you: Quality guaranteed and expert technical support

---

- Replacement or refund for products not performing as stated on the datasheet
- Valid for 12 months from date of delivery
- Response to your inquiry within 24 hours
- We provide support in Chinese, English, French, German, Japanese and Spanish
- Extensive multi-media technical resources to help you
- We investigate all quality concerns to ensure our products perform to the highest standards

If the product does not perform as described on this datasheet, we will offer a refund or replacement. For full details of the Abpromise, please visit <https://www.abcam.com/abpromise> or contact our technical team.

#### Terms and conditions

---

- Guarantee only valid for products bought direct from Abcam or one of our authorized distributors