

## Product datasheet

### Anti-CD1d antibody [1B1] ab95734

[2 References](#) [1 Image](#)

#### Overview

---

<b>Product name</b>	Anti-CD1d antibody [1B1]
<b>Description</b>	Rat monoclonal [1B1] to CD1d
<b>Host species</b>	Rat
<b>Specificity</b>	ab95734 detects $\beta$ 2-m associated CD1d
<b>Tested applications</b>	<b>Suitable for:</b> Flow Cyt
<b>Species reactivity</b>	<b>Reacts with:</b> Mouse
<b>Immunogen</b>	Tissue, cells or virus corresponding to Mouse CD1d. Mouse C57Bl/6 thymocytes
<b>Positive control</b>	Mouse splenocyte suspensions
<b>General notes</b>	<p>The Life Science industry has been in the grips of a reproducibility crisis for a number of years. Abcam is leading the way in addressing this with our range of recombinant monoclonal antibodies and knockout edited cell lines for gold-standard validation. Please check that this product meets your needs before purchasing.</p> <p>If you have any questions, special requirements or concerns, please send us an inquiry and/or contact our Support team ahead of purchase. Recommended alternatives for this product can be found below, along with publications, customer reviews and Q&amp;As</p>

#### Properties

---

<b>Form</b>	Liquid
<b>Storage instructions</b>	Shipped at 4°C. Store at +4°C short term (1-2 weeks). Store at -20°C or -80°C. Avoid freeze / thaw cycle.
<b>Storage buffer</b>	pH: 7.20 Preservative: 0.09% Sodium azide Constituents: 0.87% Sodium chloride, PBS
<b>Purity</b>	Protein G purified
<b>Clonality</b>	Monoclonal
<b>Clone number</b>	1B1
<b>Isotype</b>	IgG2b
<b>Light chain type</b>	kappa

## Applications

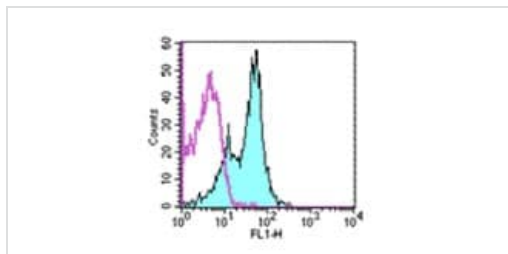
**The Abpromise guarantee** Our **Abpromise guarantee** covers the use of ab95734 in the following tested applications. The application notes include recommended starting dilutions; optimal dilutions/concentrations should be determined by the end user.

Application	Abreviews	Notes
Flow Cyt		Use 1 µg for 10 <sup>5-8</sup> cells. in a final volume of 100 µL <b>ab18536</b> - Rat monoclonal IgG2b, is suitable for use as an isotype control with this antibody.

## Target

<b>Function</b>	Antigen-presenting protein that binds self and non-self glycolipids and presents them to T-cell receptors on natural killer T-cells.
<b>Tissue specificity</b>	Expressed on cortical thymocytes, on certain T-cell leukemias, and in various other tissues.
<b>Sequence similarities</b>	Contains 1 Ig-like (immunoglobulin-like) domain.
<b>Cellular localization</b>	Cell membrane. Endosome membrane. Lysosome membrane. Subject to intracellular trafficking between the cell membrane, endosomes and lysosomes.

## Images



Flow Cytometry - Anti-CD1d antibody [1B1]  
(ab95734)

ab95734 at 1 µg per test staining BALB/c splenocytes (filled histogram) by Flow Cytometry. The control utilised 1.0 µg of Rat IgG2b Isotype Control (open histogram).

**Please note:** All products are "FOR RESEARCH USE ONLY. NOT FOR USE IN DIAGNOSTIC PROCEDURES"

## Our Abpromise to you: Quality guaranteed and expert technical support

- Replacement or refund for products not performing as stated on the datasheet
- Valid for 12 months from date of delivery
- Response to your inquiry within 24 hours
- We provide support in Chinese, English, French, German, Japanese and Spanish
- Extensive multi-media technical resources to help you
- We investigate all quality concerns to ensure our products perform to the highest standards

If the product does not perform as described on this datasheet, we will offer a refund or replacement. For full details of the Abpromise, please visit <https://www.abcam.com/abpromise> or contact our technical team.

### **Terms and conditions**

---

- Guarantee only valid for products bought direct from Abcam or one of our authorized distributors