

Product datasheet

Anti-CD1d antibody [WTH1] ab119846

[1 References](#) [1 Image](#)

Overview

Product name	Anti-CD1d antibody [WTH1]
Description	Mouse monoclonal [WTH1] to CD1d
Host species	Mouse
Specificity	ab119846 cross reacts weakly with Mouse tissue in IHC and WB, but reacts strongly with both Rat and Mouse antigens in FC and IP.
Tested applications	Suitable for: IHC-Fr
Species reactivity	Reacts with: Rat
Immunogen	Tissue, cells or virus corresponding to Rat CD1d. Rat CD1d-transduced M12.4.1.C3 cells.
Positive control	LEW Rat spleen tissue.
General notes	<p>The Life Science industry has been in the grips of a reproducibility crisis for a number of years. Abcam is leading the way in addressing this with our range of recombinant monoclonal antibodies and knockout edited cell lines for gold-standard validation. Please check that this product meets your needs before purchasing.</p> <p>If you have any questions, special requirements or concerns, please send us an inquiry and/or contact our Support team ahead of purchase. Recommended alternatives for this product can be found below, along with publications, customer reviews and Q&As</p>

Properties

Form	Liquid
Storage instructions	Shipped at 4°C. Store at -20°C or -80°C. Avoid freeze / thaw cycle. Store undiluted.
Storage buffer	Preservative: 0.02% Sodium azide Constituent: 99% PBS
Purity	Immunogen affinity purified
Purification notes	ab119846 is purified.
Clonality	Monoclonal
Clone number	WTH1
Isotype	IgG2a

Applications

The Abpromise guarantee

Our **Abpromise guarantee** covers the use of ab119846 in the following tested applications.

The application notes include recommended starting dilutions; optimal dilutions/concentrations should be determined by the end user.

Application	Abreviews	Notes
IHC-Fr		Use at an assay dependent concentration.

Target

Function

Antigen-presenting protein that binds self and non-self glycolipids and presents them to T-cell receptors on natural killer T-cells.

Tissue specificity

Expressed on cortical thymocytes, on certain T-cell leukemias, and in various other tissues.

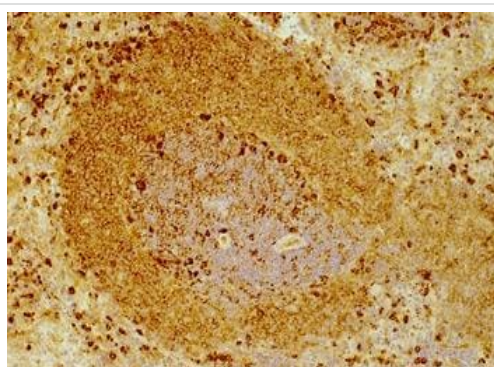
Sequence similarities

Contains 1 Ig-like (immunoglobulin-like) domain.

Cellular localization

Cell membrane. Endosome membrane. Lysosome membrane. Subject to intracellular trafficking between the cell membrane, endosomes and lysosomes.

Images



Immunoperoxidase staining of LEW Rat spleen follicle using ab119846.

Immunohistochemistry (Frozen sections) - Anti-CD1d antibody [WTH1] (ab119846)

Please note: All products are "FOR RESEARCH USE ONLY. NOT FOR USE IN DIAGNOSTIC PROCEDURES"

Our Abpromise to you: Quality guaranteed and expert technical support

- Replacement or refund for products not performing as stated on the datasheet
- Valid for 12 months from date of delivery
- Response to your inquiry within 24 hours
- We provide support in Chinese, English, French, German, Japanese and Spanish
- Extensive multi-media technical resources to help you
- We investigate all quality concerns to ensure our products perform to the highest standards

If the product does not perform as described on this datasheet, we will offer a refund or replacement. For full details of the Abpromise, please visit <https://www.abcam.com/abpromise> or contact our technical team.

Terms and conditions

- Guarantee only valid for products bought direct from Abcam or one of our authorized distributors