

Product datasheet

Anti-CD20 antibody ab206936

Recombinant

2 Images

Overview

| | |
|----------------------------|---|
| Product name | Anti-CD20 antibody |
| Description | Human monoclonal to CD20 - Chimeric |
| Host species | Human |
| Tested applications | Suitable for: Neutralising |
| Species reactivity | Reacts with: Human |
| Immunogen | Fusion protein corresponding to Human CD20. Features the constant region of the Human IgG1 isotype and the variable region of CD20, expressed in a 293 freestyle cell expression system (HEK293). Database link: P11836 |
| Epitope | ab206936 binds to Human CD20 extracellular region amino acids 142- 184, where it acts as an agonist of the CD20 protein. |
| Positive control | WIL2-S cells |
| General notes | <p>The Life Science industry has been in the grips of a reproducibility crisis for a number of years. Abcam is leading the way in addressing this with our range of recombinant monoclonal antibodies and knockout edited cell lines for gold-standard validation. Please check that this product meets your needs before purchasing.</p> <p>If you have any questions, special requirements or concerns, please send us an inquiry and/or contact our Support team ahead of purchase. Recommended alternatives for this product can be found below, along with publications, customer reviews and Q&As</p> |

Properties

| | |
|-----------------------------|---|
| Form | Liquid |
| Storage instructions | Shipped at 4°C. Store at +4°C short term (1-2 weeks). Upon delivery aliquot. Store at -20°C long term. Avoid freeze / thaw cycle. |
| Storage buffer | pH: 7.40 Constituents: PBS, 0.8% Sodium chloride, 0.02% Potassium chloride, 20% Glycerol (glycerin, glycerine) Endotoxin Level: <1 EU/ µg |

| | |
|-------------------------|------------------|
| Purity | >90% by SDS-PAGE |
| Clonality | Monoclonal |
| Isotype | IgG1 |
| Light chain type | kappa |

Applications

The Abpromise guarantee Our **Abpromise guarantee** covers the use of ab206936 in the following tested applications. The application notes include recommended starting dilutions; optimal dilutions/concentrations should be determined by the end user.

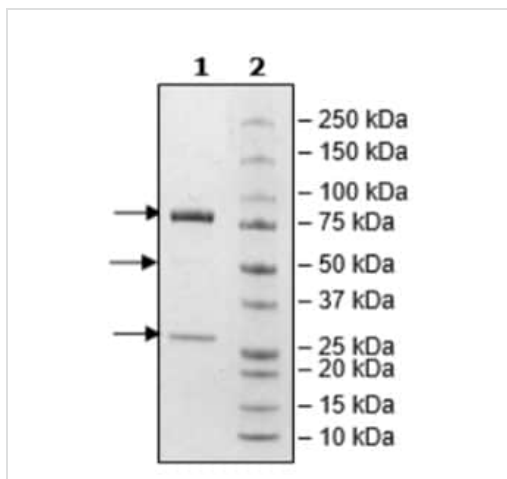
| Application | Abreviews | Notes |
|---------------------|-----------|--|
| Neutralising | | Use at an assay dependent concentration. EC ₅₀ : 0.24 µg/ml |

Target

| | |
|---|--|
| Function | This protein may be involved in the regulation of B-cell activation and proliferation. |
| Tissue specificity | Expressed on B-cells. |
| Involvement in disease | Defects in MS4A1 are the cause of immunodeficiency common variable type 5 (CVID5) [MIM:613495]; also called antibody deficiency due to CD20 defect. CVID5 is a primary immunodeficiency characterized by antibody deficiency, hypogammaglobulinemia, recurrent bacterial infections and an inability to mount an antibody response to antigen. The defect results from a failure of B-cell differentiation and impaired secretion of immunoglobulins; the numbers of circulating B cells is usually in the normal range, but can be low. |
| Sequence similarities | Belongs to the MS4A family. |
| Post-translational modifications | Phosphorylated. Might be functionally regulated by protein kinase(s). |
| Cellular localization | Membrane. |

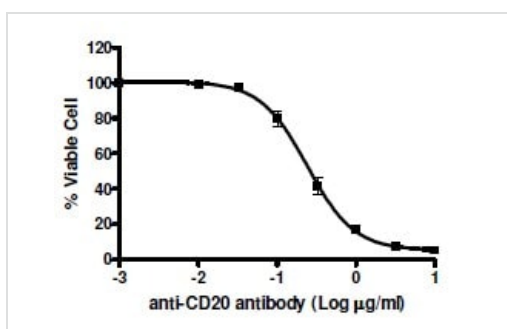
Images

SDS-PAGE analysis of ab206936.



SDS-PAGE - Anti-CD20 antibody (ab206936)

WIL2-S cells treated with various concentrations of ab206936 + 10% rabbit complement. $EC_{50} = 0.24 \mu\text{g/mL}$.



Neutralising - Anti-CD20 antibody (ab206936)

Please note: All products are "FOR RESEARCH USE ONLY. NOT FOR USE IN DIAGNOSTIC PROCEDURES"

Our Abpromise to you: Quality guaranteed and expert technical support

- Replacement or refund for products not performing as stated on the datasheet
- Valid for 12 months from date of delivery
- Response to your inquiry within 24 hours
- We provide support in Chinese, English, French, German, Japanese and Spanish
- Extensive multi-media technical resources to help you
- We investigate all quality concerns to ensure our products perform to the highest standards

If the product does not perform as described on this datasheet, we will offer a refund or replacement. For full details of the Abpromise, please visit <https://www.abcam.com/abpromise> or contact our technical team.

Terms and conditions

- Guarantee only valid for products bought direct from Abcam or one of our authorized distributors