



### Anti-CD20 antibody ab244336

8 Images

#### Overview

<b>Product name</b>	Anti-CD20 antibody
<b>Description</b>	Rabbit polyclonal to CD20
<b>Host species</b>	Rabbit
<b>Tested applications</b>	<b>Suitable for:</b> IHC-P, ICC/IF, WB
<b>Species reactivity</b>	<b>Reacts with:</b> Human
<b>Immunogen</b>	Recombinant fragment corresponding to Human CD20 aa 200 to the C-terminus. Database link: <a href="#">P11836</a>
	 <a href="#">Run BLAST with</a>  <a href="#">Run BLAST with</a>
<b>Positive control</b>	WB: Daudi cells ICC/IF: REH cells. IHC-P: Human gastrointestinal, tonsil, lymph node and spleen tissue.
<b>General notes</b>	<p>The Life Science industry has been in the grips of a reproducibility crisis for a number of years. Abcam is leading the way in addressing this with our range of recombinant monoclonal antibodies and knockout edited cell lines for gold-standard validation. Please check that this product meets your needs before purchasing.</p> <p>If you have any questions, special requirements or concerns, please send us an inquiry and/or contact our Support team ahead of purchase. Recommended alternatives for this product can be found below, along with publications, customer reviews and Q&amp;As</p>

#### Properties

<b>Form</b>	Liquid
<b>Storage instructions</b>	Shipped at 4°C. Store at +4°C short term (1-2 weeks). Upon delivery aliquot. Store at -20°C long term. Avoid freeze / thaw cycle.
<b>Storage buffer</b>	pH: 7.20 Preservative: 0.02% Sodium azide Constituents: PBS, 40% Glycerol (glycerin, glycerine)
<b>Purity</b>	Immunogen affinity purified
<b>Clonality</b>	Polyclonal
<b>Isotype</b>	IgG

## Applications

### The Abpromise guarantee

Our **Abpromise guarantee** covers the use of ab244336 in the following tested applications.

The application notes include recommended starting dilutions; optimal dilutions/concentrations should be determined by the end user.

Application	Abreviews	Notes
IHC-P		1/1000 - 1/2500. Perform heat mediated antigen retrieval with citrate buffer pH 6 before commencing with IHC staining protocol.
ICC/IF		Use a concentration of 0.25 - 2 µg/ml. Fixation/Permeabilization: PFA/Triton X-100.
WB		Use a concentration of 0.04 - 0.4 µg/ml.

## Target

### Function

This protein may be involved in the regulation of B-cell activation and proliferation.

### Tissue specificity

Expressed on B-cells.

### Involvement in disease

Defects in MS4A1 are the cause of immunodeficiency common variable type 5 (CVID5) [MIM:613495]; also called antibody deficiency due to CD20 defect. CVID5 is a primary immunodeficiency characterized by antibody deficiency, hypogammaglobulinemia, recurrent bacterial infections and an inability to mount an antibody response to antigen. The defect results from a failure of B-cell differentiation and impaired secretion of immunoglobulins; the numbers of circulating B cells is usually in the normal range, but can be low.

### Sequence similarities

Belongs to the MS4A family.

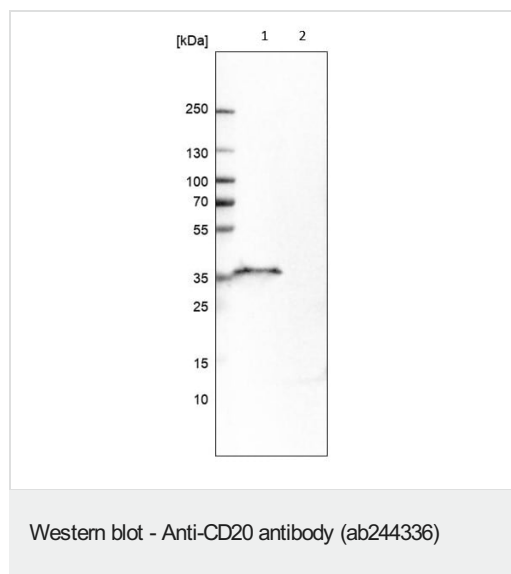
### Post-translational modifications

Phosphorylated. Might be functionally regulated by protein kinase(s).

### Cellular localization

Membrane.

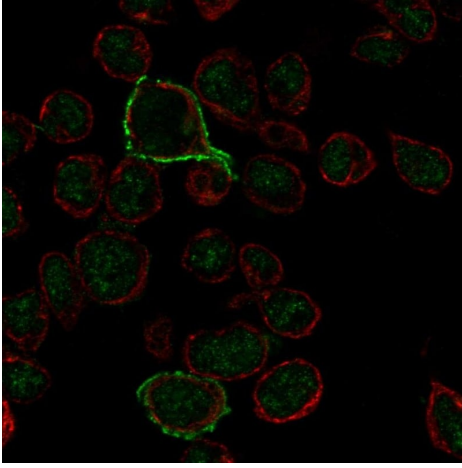
## Images



**All lanes :** Anti-CD20 antibody (ab244336) at 0.4 µg/ml

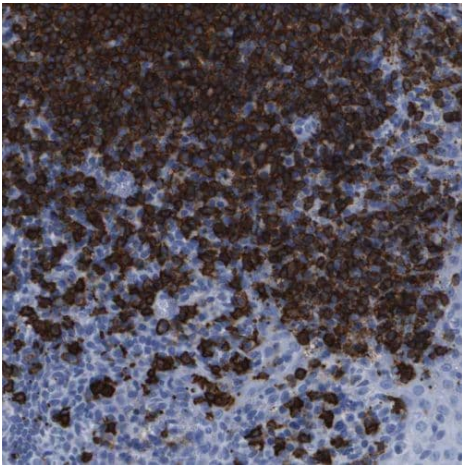
**Lane 1 :** Daudi cells

**Lane 2 :** U-2 OS cells



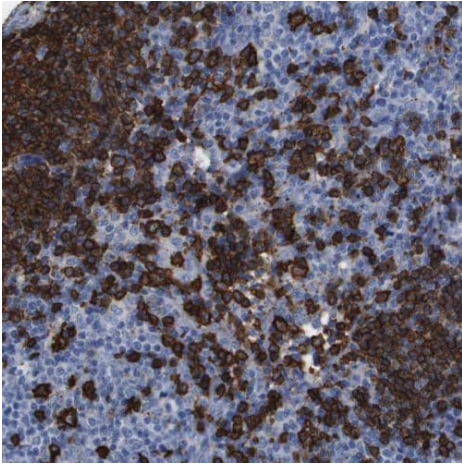
Immunocytochemistry/ Immunofluorescence - Anti-CD20 antibody (ab244336)

PFA fixed, Triton X-100 permeabilized REH (Human cell line) cells labeling CD20 using ab244336 at 4 µg/ml (green) in ICC/IF.



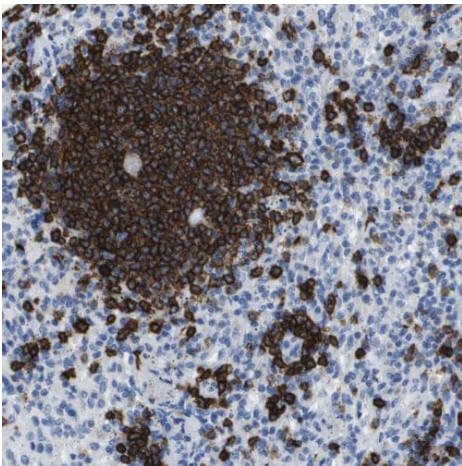
Immunohistochemistry (Formalin/PFA-fixed paraffin-embedded sections) - Anti-CD20 antibody (ab244336)

Formalin-fixed, paraffin-embedded human tonsil tissue stained for CD20 with ab244336 at a 1/1000 dilution in immunohistochemical analysis.



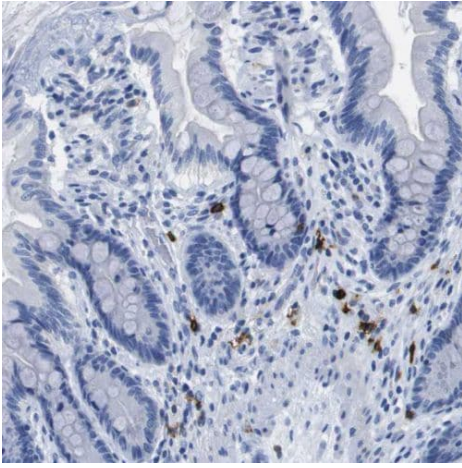
Formalin-fixed, paraffin-embedded human lymph node tissue stained for CD20 with ab244336 at a 1/1000 dilution in immunohistochemical analysis.

Immunohistochemistry (Formalin/PFA-fixed paraffin-embedded sections) - Anti-CD20 antibody (ab244336)



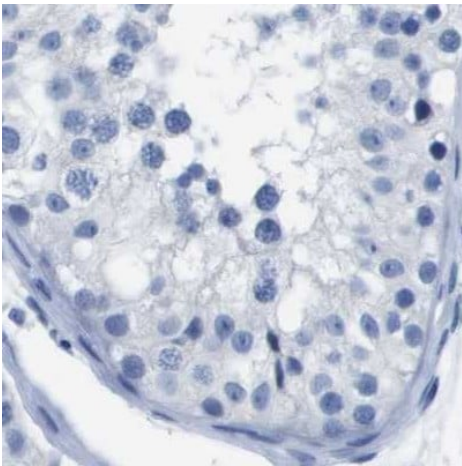
Formalin-fixed, paraffin-embedded human spleen tissue stained for CD20 with ab244336 at a 1/1000 dilution in immunohistochemical analysis.

Immunohistochemistry (Formalin/PFA-fixed paraffin-embedded sections) - Anti-CD20 antibody (ab244336)



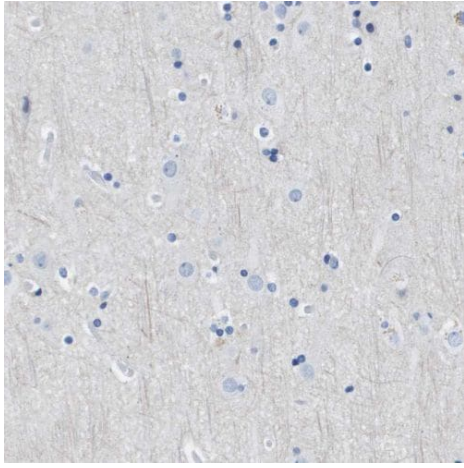
Formalin-fixed, paraffin-embedded human gastrointestinal tissue stained for CD20 with ab244336 at a 1/1000 dilution in immunohistochemical analysis.

Immunohistochemistry (Formalin/PFA-fixed paraffin-embedded sections) - Anti-CD20 antibody (ab244336)



Formalin-fixed, paraffin-embedded human testis tissue stained for CD20 with ab244336 at a 1/1000 dilution in immunohistochemical analysis.

Immunohistochemistry (Formalin/PFA-fixed paraffin-embedded sections) - Anti-CD20 antibody (ab244336)



Immunohistochemistry (Formalin/PFA-fixed paraffin-embedded sections) - Anti-CD20 antibody (ab244336)

Formalin-fixed, paraffin-embedded human cerebral cortex tissue stained for CD20 with ab244336 at a 1/1000 dilution in immunohistochemical analysis.

Low expression as expected.

**Please note:** All products are "FOR RESEARCH USE ONLY. NOT FOR USE IN DIAGNOSTIC PROCEDURES"

#### Our Abpromise to you: Quality guaranteed and expert technical support

---

- Replacement or refund for products not performing as stated on the datasheet
- Valid for 12 months from date of delivery
- Response to your inquiry within 24 hours
- We provide support in Chinese, English, French, German, Japanese and Spanish
- Extensive multi-media technical resources to help you
- We investigate all quality concerns to ensure our products perform to the highest standards

If the product does not perform as described on this datasheet, we will offer a refund or replacement. For full details of the Abpromise, please visit <https://www.abcam.com/abpromise> or contact our technical team.

#### Terms and conditions

---

- Guarantee only valid for products bought direct from Abcam or one of our authorized distributors