

Anti-CD20 antibody, prediluted ab27092

[2 Images](#)

Overview

Product name	Anti-CD20 antibody, prediluted
Description	Rabbit polyclonal to CD20, prediluted
Host species	Rabbit
Tested applications	Suitable for: WB, IHC-P
Species reactivity	Reacts with: Human
Immunogen	Synthetic peptide within Human CD20 aa 250 to the C-terminus (C terminal). The exact sequence is proprietary. Database link: P11836
Positive control	BJAB WCL and tonsil.
General notes	<p>This product is FOR RESEARCH USE ONLY. For commercial use, please contact partnerships@abcam.com.</p> <p>The Life Science industry has been in the grips of a reproducibility crisis for a number of years. Abcam is leading the way in addressing this with our range of recombinant monoclonal antibodies and knockout edited cell lines for gold-standard validation. Please check that this product meets your needs before purchasing.</p> <p>If you have any questions, special requirements or concerns, please send us an inquiry and/or contact our Support team ahead of purchase. Recommended alternatives for this product can be found below, along with publications, customer reviews and Q&As</p>

Properties

Form	Liquid
Storage instructions	Shipped at 4°C. Store at +4°C.
Storage buffer	pH: 7.60 Preservative: 0.1% Sodium azide Constituents: Tris buffered saline, 1% BSA
Purity	Immunogen affinity purified
Clonality	Polyclonal
Isotype	IgG

Applications

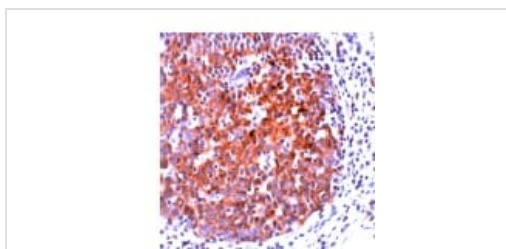
The Abpromise guarantee Our **Abpromise guarantee** covers the use of ab27092 in the following tested applications. The application notes include recommended starting dilutions; optimal dilutions/concentrations should be determined by the end user.

Application	Abreviews	Notes
WB		1/1. Predicted molecular weight: 33 kDa.
IHC-P		1/1. Do not perform antigen retrieval. Incubation time is 10 minute at room temperature and the staining is cytoplasmic and on the cell membrane. Not yet tested in other applications. Optimal dilutions/concentrations should be determined by the end user.

Target

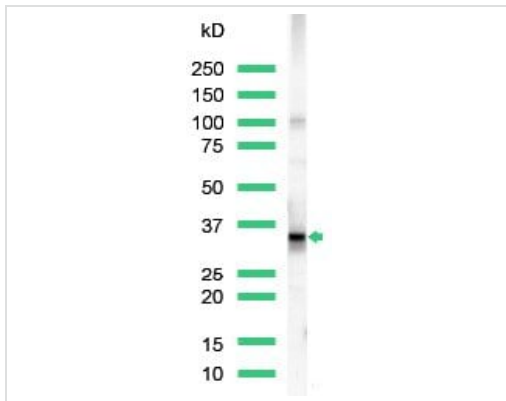
Function	This protein may be involved in the regulation of B-cell activation and proliferation.
Tissue specificity	Expressed on B-cells.
Involvement in disease	Defects in MS4A1 are the cause of immunodeficiency common variable type 5 (CVID5) [MIM:613495]; also called antibody deficiency due to CD20 defect. CVID5 is a primary immunodeficiency characterized by antibody deficiency, hypogammaglobulinemia, recurrent bacterial infections and an inability to mount an antibody response to antigen. The defect results from a failure of B-cell differentiation and impaired secretion of immunoglobulins; the numbers of circulating B cells is usually in the normal range, but can be low.
Sequence similarities	Belongs to the MS4A family.
Post-translational modifications	Phosphorylated. Might be functionally regulated by protein kinase(s).
Cellular localization	Membrane.

Images



Immunohistochemistry (Formalin/PFA-fixed paraffin-embedded sections) - Anti-CD20 antibody, prediluted (ab27092)

Formalin fixed, paraffin embedded human tonsil tissue slide stained with anti CD20 antibody (ab27092).



Western blot - Anti-CD20 antibody, prediluted
(ab27092)

Anti-CD20 antibody (**ab27093**) at 1/25 dilution + Raji cell lysate

Predicted band size: 33 kDa

Observed band size: 35 kDa

Please note: All products are "FOR RESEARCH USE ONLY. NOT FOR USE IN DIAGNOSTIC PROCEDURES"

Our Abpromise to you: Quality guaranteed and expert technical support

- Replacement or refund for products not performing as stated on the datasheet
- Valid for 12 months from date of delivery
- Response to your inquiry within 24 hours
- We provide support in Chinese, English, French, German, Japanese and Spanish
- Extensive multi-media technical resources to help you
- We investigate all quality concerns to ensure our products perform to the highest standards

If the product does not perform as described on this datasheet, we will offer a refund or replacement. For full details of the Abpromise, please visit <https://www.abcam.com/abpromise> or contact our technical team.

Terms and conditions

- Guarantee only valid for products bought direct from Abcam or one of our authorized distributors