

## Product datasheet

# Anti-CD200R antibody [OX102] ab243838

[1 References](#) [2 Images](#)

### Overview

---

<b>Product name</b>	Anti-CD200R antibody [OX102]
<b>Description</b>	Mouse monoclonal [OX102] to CD200R
<b>Host species</b>	Mouse
<b>Tested applications</b>	<b>Suitable for:</b> IHC-Fr, Flow Cyt
<b>Species reactivity</b>	<b>Reacts with:</b> Rat
<b>Immunogen</b>	Tissue, cells or virus corresponding to Rat CD200R. Rat peritoneal exudate cells.
<b>Positive control</b>	IHC-Fr: Rat spleen tissue. Flow Cyt: Lewis rat splenocytes.
<b>General notes</b>	<p>This antibody clone is manufactured by Abcam. If you require a custom buffer formulation or conjugation for your experiments, please contact <a href="mailto:orders@abcam.com">orders@abcam.com</a>.</p> <p>The Life Science industry has been in the grips of a reproducibility crisis for a number of years. Abcam is leading the way in addressing this with our range of recombinant monoclonal antibodies and knockout edited cell lines for gold-standard validation. Please check that this product meets your needs before purchasing.</p> <p>If you have any questions, special requirements or concerns, please send us an inquiry and/or contact our Support team ahead of purchase. Recommended alternatives for this product can be found below, along with publications, customer reviews and Q&amp;As</p>

### Properties

---

<b>Form</b>	Liquid
<b>Storage instructions</b>	Shipped at 4°C. Store at +4°C short term (1-2 weeks). Upon delivery aliquot. Store at -20°C long term. Avoid freeze / thaw cycle.
<b>Storage buffer</b>	Preservative: 0.02% Sodium azide Constituent: PBS
<b>Purity</b>	Protein G purified
<b>Clonality</b>	Monoclonal
<b>Clone number</b>	OX102
<b>Isotype</b>	IgG1
<b>Light chain type</b>	kappa

## Applications

The **Abpromise guarantee** Our **Abpromise guarantee** covers the use of ab243838 in the following tested applications.

The application notes include recommended starting dilutions; optimal dilutions/concentrations should be determined by the end user.

Application	Abreviews	Notes
IHC-Fr		Use a concentration of 5 µg/ml.
Flow Cyt		Use at an assay dependent concentration.

## Target

**Function** Receptor for the CD200/OX2 cell surface glycoprotein. Also binds to HHV-8 K14 viral CD200 homolog with identical affinity and kinetics as the host CD200.

**Tissue specificity** Expressed in granulocytes, monocytes, most T cells, neutrophils, basophils and a subset of NK, NKT and B cells (at protein level). Expressed in bone marrow, lymph nodes, spleen, lung, liver, spinal cord, kidney. Expressed in monocyte-derived dendritic and mast cells.

**Sequence similarities** Belongs to the CD200R family.

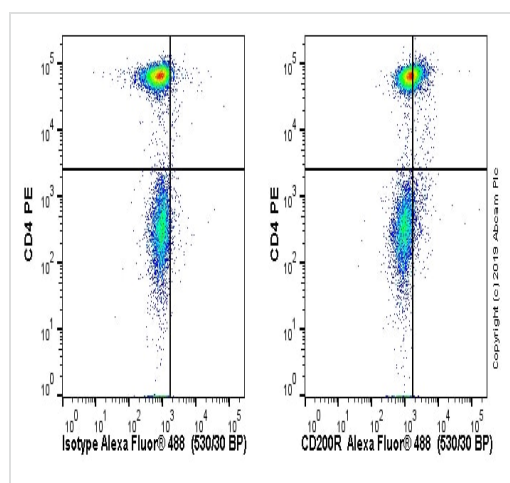
Contains 1 Ig-like C2-type (immunoglobulin-like) domain.

Contains 1 Ig-like V-type (immunoglobulin-like) domain.

**Post-translational modifications** The mature form of isoform 2 and/or isoform 4 starts at sequence position 27 of the corresponding isoform.

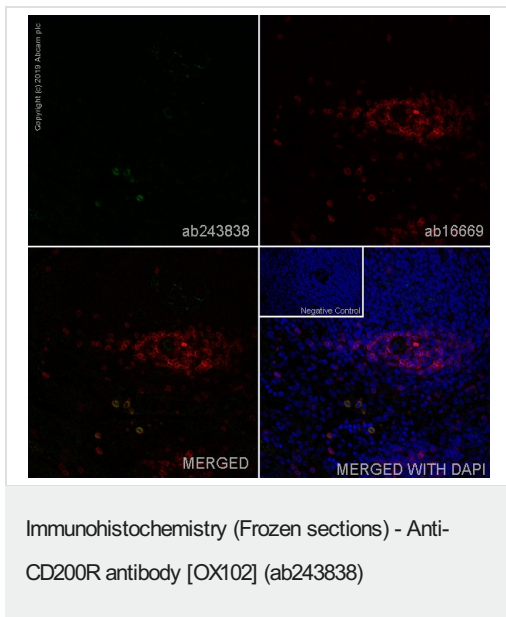
**Cellular localization** Secreted and Cell membrane.

## Images



Flow Cytometry - Anti-CD200R antibody [OX102]  
(ab243838)

ab170190) isotype (left). Cells were incubated for 30 min on ice in 1x PBS containing 10 % rat serum to block FC receptors and non-specific protein-protein interaction followed by the antibody (ab243838) or mouse IgG1&kappa; (ab170190) isotype (1x 10ab150117) was used at 1/2000 dilution for 30 min on ice.



IHC image of CD200R staining in a section of frozen normal rat spleen\*.

The section was fixed using 10% formaldehyde in 1XPBS for 10 minutes. No antigen retrieval step was performed prior to staining. Non-specific protein-protein interactions were then blocked in TBS containing 0.025% (v/v) Triton X-100, 0.3M glycine and 1% (w/v) BSA for 1h at room temperature. The section was then incubated overnight at +4°C in TBS containing 0.025% (v/v) Triton X-100 and 1% (w/v) BSA with ab243838 (shown in green) at 5µg/ml and co-localisation of T cells stained using **ab16669** (shown in red), Rabbit monoclonal to CD3, at 1/150 dilution. The section was then incubated with **ab150117** (Goat polyclonal Secondary Antibody to Mouse IgG - H&L (Alexa Fluor® 488, 1/1000)) presabsorbed and **ab150080** (Goat polyclonal Secondary Antibody to Rabbit IgG - H&L (Alexa Fluor® 594, 1/1000)) for 1 hour at room temperature. The secondary-only control image is taken from an identical assay without primary antibody. The section was then mounted using Fluoromount®.

Image was taken with a confocal microscope (Leica-Microsystems, TCS SP8). For IHC staining systems (automated and non-automated), customers should optimize variable parameters such as antibody concentrations and incubation times.

\*Tissue obtained from Charles River.

**Please note:** All products are "FOR RESEARCH USE ONLY. NOT FOR USE IN DIAGNOSTIC PROCEDURES"

### Our Abpromise to you: Quality guaranteed and expert technical support

- Replacement or refund for products not performing as stated on the datasheet
- Valid for 12 months from date of delivery
- Response to your inquiry within 24 hours
- We provide support in Chinese, English, French, German, Japanese and Spanish
- Extensive multi-media technical resources to help you
- We investigate all quality concerns to ensure our products perform to the highest standards

If the product does not perform as described on this datasheet, we will offer a refund or replacement. For full details of the Abpromise, please visit <https://www.abcam.com/abpromise> or contact our technical team.

### Terms and conditions

- Guarantee only valid for products bought direct from Abcam or one of our authorized distributors