


Anti-CD208 antibody ab153932

2 Images

Overview

Product name	Anti-CD208 antibody
Description	Rabbit polyclonal to CD208
Host species	Rabbit
Tested applications	Suitable for: WB, ICC/IF
Species reactivity	Reacts with: Human Predicted to work with: Monkey 
Immunogen	Recombinant fragment corresponding to Human CD208 aa 116-372.
Positive control	HeLa cells; HeLa and MOLT4 whole cell lysates.
General notes	<p>The Life Science industry has been in the grips of a reproducibility crisis for a number of years. Abcam is leading the way in addressing this with our range of recombinant monoclonal antibodies and knockout edited cell lines for gold-standard validation. Please check that this product meets your needs before purchasing.</p> <p>If you have any questions, special requirements or concerns, please send us an inquiry and/or contact our Support team ahead of purchase. Recommended alternatives for this product can be found below, along with publications, customer reviews and Q&As</p>

Properties

Form	Liquid
Storage instructions	Shipped at 4°C. Upon delivery aliquot. Store at -20°C or -80°C. Avoid freeze / thaw cycle.
Storage buffer	pH: 7.00 Preservative: 0.01% Thimerosal (merthiolate) Constituents: 1.21% Tris, 0.75% Glycine, 10% Glycerol (glycerin, glycerine)
Purity	Immunogen affinity purified
Clonality	Polyclonal
Isotype	IgG

Applications

The **Abpromise guarantee** Our **Abpromise guarantee** covers the use of ab153932 in the following tested applications.

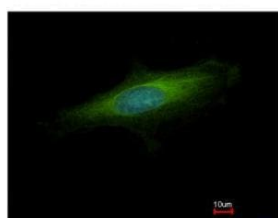
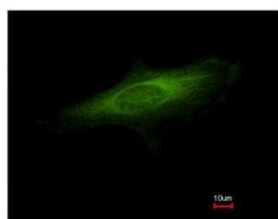
The application notes include recommended starting dilutions; optimal dilutions/concentrations should be determined by the end user.

Application	Abreviews	Notes
WB		1/500 - 1/3000. Predicted molecular weight: 44 kDa.
ICC/IF		1/100 - 1/1000.

Target

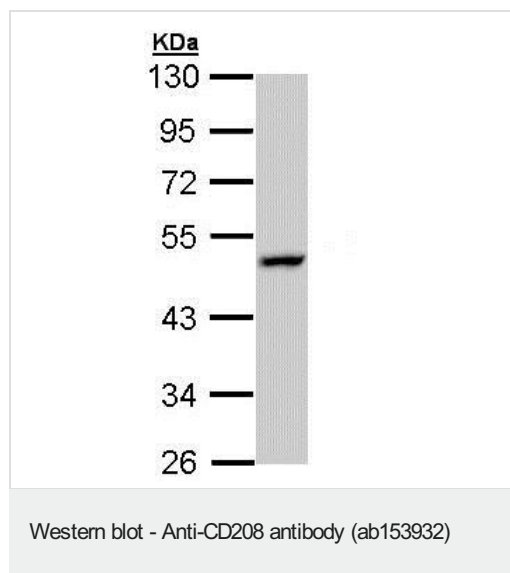
Function	Might change the lysosome function after the transfer of peptide-MHC class II molecules to the surface of dendritic cells.
Tissue specificity	Expressed in lymphoid organs and dendritic cells. Expressed in lung. Up-regulated in carcinomas of the esophagus, colon, rectum, ureter, stomach, breast, fallopian tube, thyroid and parotid tissues.
Sequence similarities	Belongs to the LAMP family.
Cellular localization	Lysosome membrane.

Images



Immunofluorescence analysis of methanol-fixed HeLa cells, labeling CD208 with ab153932 at 1/500 dilution. Lower image shows cells co-stained with Hoechst 33342.

Immunocytochemistry/ Immunofluorescence - Anti-CD208 antibody (ab153932)



Anti-CD208 antibody (ab153932) at 1/1000 dilution + HeLa whole cell lysate at 30 µg

Predicted band size: 44 kDa

10% SDS PAGE

Please note: All products are "FOR RESEARCH USE ONLY. NOT FOR USE IN DIAGNOSTIC PROCEDURES"

Our Abpromise to you: Quality guaranteed and expert technical support

- Replacement or refund for products not performing as stated on the datasheet
- Valid for 12 months from date of delivery
- Response to your inquiry within 24 hours
- We provide support in Chinese, English, French, German, Japanese and Spanish
- Extensive multi-media technical resources to help you
- We investigate all quality concerns to ensure our products perform to the highest standards

If the product does not perform as described on this datasheet, we will offer a refund or replacement. For full details of the Abpromise, please visit <https://www.abcam.com/abpromise> or contact our technical team.

Terms and conditions

- Guarantee only valid for products bought direct from Abcam or one of our authorized distributors