

Product datasheet

Anti-CD21 antibody - C-terminal ab203299

[2 Images](#)

Overview

Product name	Anti-CD21 antibody - C-terminal
Description	Rabbit polyclonal to CD21 - C-terminal
Host species	Rabbit
Tested applications	Suitable for: Flow Cyt, IHC-P
Species reactivity	Reacts with: Mouse, Human
Immunogen	Synthetic peptide within Human CD21 aa 1050 to the C-terminus (C terminal) conjugated to keyhole limpet haemocyanin. The exact immunogen sequence used to generate this antibody is proprietary information. If additional detail on the immunogen is needed to determine the suitability of the antibody for your needs, please contact our Scientific Support team to discuss your requirements. Database link: P20023-3

 [Run BLAST with](#)

 [Run BLAST with](#)

General notes

The Life Science industry has been in the grips of a reproducibility crisis for a number of years. Abcam is leading the way in addressing this with our range of recombinant monoclonal antibodies and knockout edited cell lines for gold-standard validation. Please check that this product meets your needs before purchasing.

If you have any questions, special requirements or concerns, please send us an inquiry and/or contact our Support team ahead of purchase. Recommended alternatives for this product can be found below, along with publications, customer reviews and Q&As

Properties

Form	Liquid
Storage instructions	Shipped at 4°C. Store at +4°C short term (1-2 weeks). Upon delivery aliquot. Store at -20°C long term. Avoid freeze / thaw cycle.
Storage buffer	pH: 7.40 Preservative: 0.02% Proclin 300 Constituents: 50% Glycerol (glycerin, glycerine), 1% BSA, 48.98% TBS, 1X Aqueous buffered solution
Purity	Protein A purified
Clonality	Polyclonal

Isotype

IgG

Applications

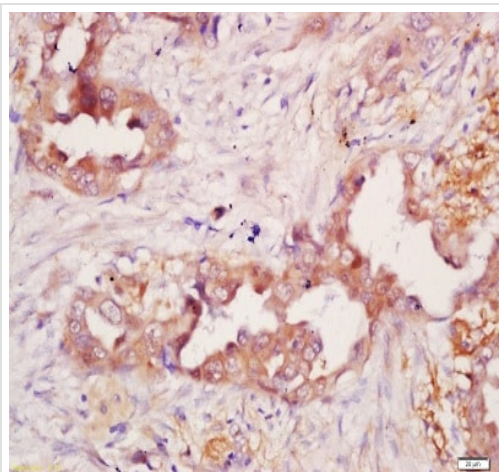
The Abpromise guarantee Our **Abpromise guarantee** covers the use of ab203299 in the following tested applications. The application notes include recommended starting dilutions; optimal dilutions/concentrations should be determined by the end user.

Application	Abreviews	Notes
Flow Cyt		1/20 - 1/100.
IHC-P		1/100 - 1/500. When using a fluorescent probe the recommended dilution is 1/50 – 1/200

Target

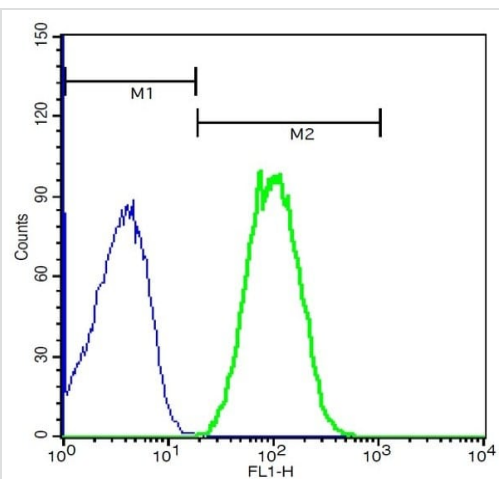
Function	Receptor for complement C3Dd, for the Epstein-Barr virus on human B-cells and T-cells and for HNRPU. Participates in B lymphocytes activation.
Tissue specificity	Mature B-lymphocytes, T-lymphocytes, pharyngeal epithelial cells, astrocytes and follicular dendritic cells of the spleen.
Involvement in disease	Genetic variations in CR2 are associated with susceptibility to systemic lupus erythematosus type 9 (SLEB9) [MIM:610927]. Systemic lupus erythematosus (SLE) is a chronic autoimmune disease with a complex genetic basis. SLE is an inflammatory, and often febrile multisystemic disorder of connective tissue characterized principally by involvement of the skin, joints, kidneys, and serosal membranes. It is thought to represent a failure of the regulatory mechanisms of the autoimmune system.
Sequence similarities	Belongs to the receptors of complement activation (RCA) family. Contains 15 Sushi (CCP/SCR) domains.
Cellular localization	Membrane.

Images



Immunohistochemical analysis of formalin/PFA-fixed paraffin-embedded human lung carcinoma labeling CD21b/c with ab203299 at a 1/200 dilution, followed by conjugation to the secondary antibody and DAB staining.

Immunohistochemistry (Formalin/PFA-fixed paraffin-embedded sections) - Anti-CD21 antibody - C-terminal (ab203299)



Flow cytometric analysis of Mouse splenocytes labeling CD21 with ab203299 at 1/100 dilution (green) or a rabbit IgG negative (blue).

Flow Cytometry - Anti-CD21 antibody - C-terminal (ab203299)

Please note: All products are "FOR RESEARCH USE ONLY. NOT FOR USE IN DIAGNOSTIC PROCEDURES"

Our Abpromise to you: Quality guaranteed and expert technical support

- Replacement or refund for products not performing as stated on the datasheet
- Valid for 12 months from date of delivery
- Response to your inquiry within 24 hours
- We provide support in Chinese, English, French, German, Japanese and Spanish
- Extensive multi-media technical resources to help you
- We investigate all quality concerns to ensure our products perform to the highest standards

If the product does not perform as described on this datasheet, we will offer a refund or replacement. For full details of the Abpromise, please visit <https://www.abcam.com/abpromise> or contact our technical team.

Terms and conditions

- Guarantee only valid for products bought direct from Abcam or one of our authorized distributors