

Product datasheet

Anti-CD226 antibody [EPR21245] ab245186

Recombinant

[2 Images](#)

Overview

Product name	Anti-CD226 antibody [EPR21245]
Description	Rabbit monoclonal [EPR21245] to CD226
Host species	Rabbit
Tested applications	Suitable for: Flow Cyt
Species reactivity	Reacts with: Mouse
Immunogen	Recombinant fragment. This information is considered to be commercially sensitive.
Positive control	Flow Cyt: C57BL/6 mouse splenocytes
General notes	This product was made using <u>synthetic libraries and phage display technology</u> . This antibody is a recombinant chimeric antibody. Rabbit chimeric monoclonal antibody (Human Fab/ Rabbit Fc).

Properties

Form	Liquid
Storage instructions	Shipped at 4°C. Store at +4°C short term (1-2 weeks). Upon delivery aliquot. Store at -20°C long term. Avoid freeze / thaw cycle.
Storage buffer	Preservative: 0.02% Sodium azide Constituents: PBS, 1% BSA
Clonality	Monoclonal
Clone number	EPR21245
Isotype	IgG1

Applications

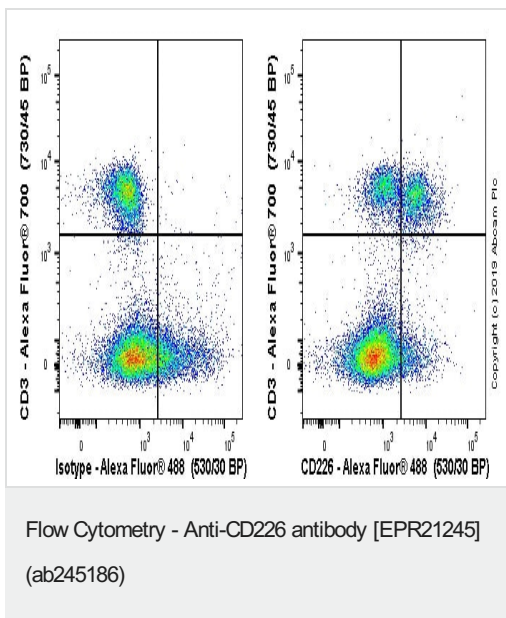
The Abpromise guarantee Our **Abpromise guarantee** covers the use of ab245186 in the following tested applications. The application notes include recommended starting dilutions; optimal dilutions/concentrations should be determined by the end user.

Application	Abreviews	Notes
Flow Cyt		Use a concentration of 1 µg/ml.

Target

Function	Receptor involved in intercellular adhesion, lymphocyte signaling, cytotoxicity and lymphokine secretion mediated by cytotoxic T-lymphocyte (CTL) and NK cell.
Tissue specificity	Expressed by peripheral blood T-lymphocytes.
Sequence similarities	Contains 2 Ig-like C2-type (immunoglobulin-like) domains.
Cellular localization	Membrane.

Images



C57BL/6 mouse splenocytes stained with ab245186 (right) or chimeric Rabbit IgG (monoclonal) (left). C57BL/6 Mouse splenocytes were incubated for 30min on ice in 1x PBS containing 10ug/ml anti CD16/32 antibody and 10% normal goat serum to block FC receptors and non-specific protein-protein interaction followed by the antibody (ab245186) or chimeric Rabbit IgG Isotype (1×10^6 in 100ul at 1ug/ml) for 30 min on ice.

The secondary antibody Goat anti-rabbit IgG H&L (Alexa Fluor® 488, pre-adsorbed) (**ab150081**) was used at 1/2000 dilution for 30 min on ice. The cells were simultaneously stained with CD3 Alexa® 700 conjugated antibody.

Acquisition of >30,000 events were collected using a 50 mW Blue laser (488nm) and 530/30 bandpass filter. Events were gated on viable lymphocytes.

Why choose a recombinant antibody?



Research with confidence
Consistent and reproducible results



Long-term and scalable supply
Recombinant technology



Success from the first experiment
Confirmed specificity



Ethical standards compliant
Animal-free production

Anti-CD226 antibody [EPR21245] (ab245186)

Please note: All products are "FOR RESEARCH USE ONLY. NOT FOR USE IN DIAGNOSTIC PROCEDURES"

Our Abpromise to you: Quality guaranteed and expert technical support

- Replacement or refund for products not performing as stated on the datasheet
- Valid for 12 months from date of delivery
- Response to your inquiry within 24 hours
- We provide support in Chinese, English, French, German, Japanese and Spanish
- Extensive multi-media technical resources to help you
- We investigate all quality concerns to ensure our products perform to the highest standards

If the product does not perform as described on this datasheet, we will offer a refund or replacement. For full details of the Abpromise, please visit <https://www.abcam.com/abpromise> or contact our technical team.

Terms and conditions

- Guarantee only valid for products bought direct from Abcam or one of our authorized distributors