

## Product datasheet

### Anti-CD23 antibody [SP23] ab16702

Recombinant RabMAb

[3 References](#) [3 Images](#)

#### Overview

Product name	Anti-CD23 antibody [SP23]
Description	Rabbit monoclonal [SP23] to CD23
Host species	Rabbit
Tested applications	<b>Suitable for:</b> WB, IHC-P, Flow Cyt
Species reactivity	<b>Reacts with:</b> Human
Immunogen	Recombinant fragment within Human CD23 aa 1-250. The exact sequence is proprietary. Database link: <a href="#">P06734</a>
Positive control	IHC-P: Human tonsil. Flow Cyt: Jurkat cell lysate. WB: Raji cell lysate.
General notes	This product is a recombinant monoclonal antibody, which offers several advantages including: <ul style="list-style-type: none"> <li>- High batch-to-batch consistency and reproducibility</li> <li>- Improved sensitivity and specificity</li> <li>- Long-term security of supply</li> <li>- Animal-free production</li> </ul> For more information <a href="#">see here</a> .  <b>This product is FOR RESEARCH USE ONLY. For commercial use, please contact <a href="mailto:partnerships@abcam.com">partnerships@abcam.com</a>.</b>

#### Properties

Form	Liquid
Storage instructions	Shipped at 4°C. Upon delivery aliquot and store at -20°C. Avoid freeze / thaw cycles.
Storage buffer	pH: 7.20 Preservative: 0.1% Sodium azide Constituents: 1% BSA, PBS
Purity	Protein A purified
Clonality	Monoclonal
Clone number	SP23
Isotype	IgG

## Applications

### The Abpromise guarantee

Our **Abpromise guarantee** covers the use of ab16702 in the following tested applications.

The application notes include recommended starting dilutions; optimal dilutions/concentrations should be determined by the end user.

Application	Abreviews	Notes
WB		Use at an assay dependent concentration.
IHC-P		1/100. Staining of formalin fixed tissues requires boiling tissue sections in 10mM citrate buffer, pH 6.0 for 10 minutes followed by cooling at room temperature for 20 minutes.
Flow Cyt		Use at an assay dependent concentration. <b>ab172730</b> - Rabbit monoclonal IgG, is suitable for use as an isotype control with this antibody.

## Target

### Function

This receptor has essential roles in the regulation of IgE production and in the differentiation of B-cells (it is a B-cell-specific antigen).

### Sequence similarities

Contains 1 C-type lectin domain.

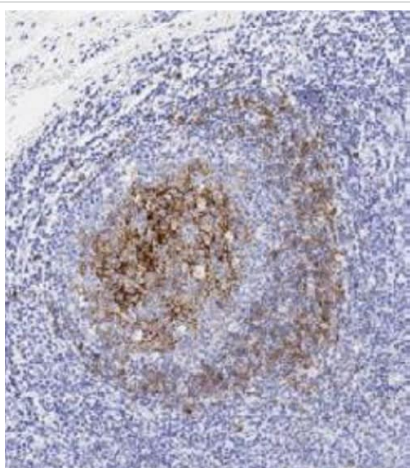
### Post-translational modifications

N- and O-glycosylated.

### Cellular localization

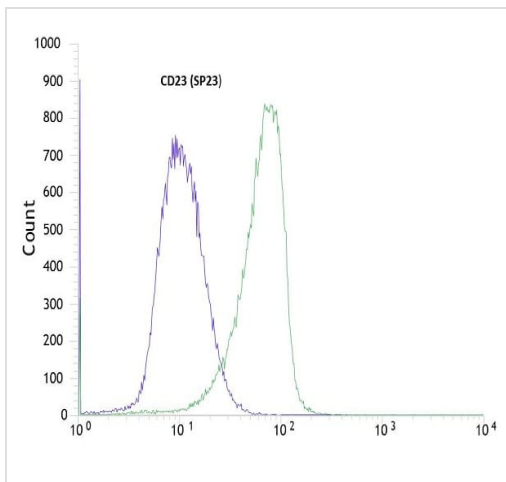
Cell membrane. Secreted. Also exists as a soluble excreted form.

## Images



Immunohistochemistry (Formalin/PFA-fixed paraffin-embedded sections) - Anti-CD23 antibody [SP23] (ab16702)

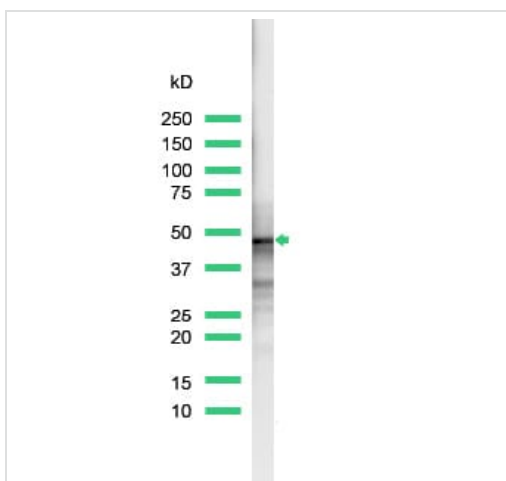
Immunohistochemical analysis of paraffin-embedded Human tonsil labeling CD23 with ab16702 at 1/100 (76 µg/ml). The section was pre-treated using heat mediated antigen retrieval with sodium citrate buffer (pH 6.0, epitope retrieval solution 1) for 20 mins. The section was then incubated with ab16702 for 15 mins at room temperature and detected using an HRP conjugated compact polymer system. The immunostaining was performed on a Leica Biosystems BOND<sup>®</sup> RX instrument. DAB was used as the chromogen. Counterstained with Hematoxylin and mounted with DPX.



Flow Cytometry - Anti-CD23 antibody [SP23]  
(ab16702)

**This image was generated using a previous batch manufactured using hybridoma production method.**

Flow cytometric analysis of rabbit anti-CD23 (SP23) antibody ab16702 (1/100) in Jurkats (green) compared to negative control of rabbit IgG (blue).



Western blot - Anti-CD23 antibody [SP23] (ab16702)

Anti-CD23 antibody [SP23] (ab16702) at 1/25 dilution + lysate prepared from Raji cells

**Observed band size: 45 kDa**

**This image was generated using a previous batch manufactured using hybridoma production method.**

**Please note:** All products are "FOR RESEARCH USE ONLY. NOT FOR USE IN DIAGNOSTIC PROCEDURES"

### Our Abpromise to you: Quality guaranteed and expert technical support

- Replacement or refund for products not performing as stated on the datasheet
- Valid for 12 months from date of delivery
- Response to your inquiry within 24 hours
- We provide support in Chinese, English, French, German, Japanese and Spanish
- Extensive multi-media technical resources to help you
- We investigate all quality concerns to ensure our products perform to the highest standards

If the product does not perform as described on this datasheet, we will offer a refund or replacement. For full details of the Abpromise, please visit <https://www.abcam.com/abpromise> or contact our technical team.

## Terms and conditions

---

- Guarantee only valid for products bought direct from Abcam or one of our authorized distributors