


Product datasheet

Anti-CD239/BCAM antibody [EPR4165] ab134110

Recombinant **RabMAb**

★★★★★ [6 Abreviews](#) [3 References](#) [4 Images](#)

Overview

Product name	Anti-CD239/BCAM antibody [EPR4165]
Description	Rabbit monoclonal [EPR4165] to CD239/BCAM
Host species	Rabbit
Tested applications	Suitable for: WB, IHC-P, ICC/IF
Species reactivity	Reacts with: Human Predicted to work with: Mouse, Rat 
Immunogen	Synthetic peptide. This information is proprietary to Abcam and/or its suppliers.
Positive control	293T cell lysate, HeLa whole cell lysate (ab150035), A431 cell lysate, Human tonsil tissue ICC/IF: A431 cells
General notes	<p>This product is a recombinant monoclonal antibody, which offers several advantages including:</p> <ul style="list-style-type: none"> - High batch-to-batch consistency and reproducibility - Improved sensitivity and specificity - Long-term security of supply - Animal-free production <p>For more information see here.</p> <p>Our RabMAb[®] technology is a patented hybridoma-based technology for making rabbit monoclonal antibodies. For details on our patents, please refer to RabMAb[®] patents.</p>

Properties

Form	Liquid
Storage instructions	Shipped at 4°C. Store at -20°C. Stable for 12 months at -20°C.
Storage buffer	<p>pH: 7.2</p> <p>Preservative: 0.05% Sodium azide</p> <p>Constituents: 0.1% BSA, 40% Glycerol (glycerin, glycerine), 9.85% Tris glycine, 50% Tissue culture supernatant</p>
Purity	Protein A purified
Clonality	Monoclonal
Clone number	EPR4165

Isotype

IgG

Applications

The Abpromise guarantee

Our **Abpromise guarantee** covers the use of ab134110 in the following tested applications.

The application notes include recommended starting dilutions; optimal dilutions/concentrations should be determined by the end user.

Application	Abreviews	Notes
WB	★★★★★ (3)	1/1000 - 1/10000. Detects a band of approximately 85 kDa (predicted molecular weight: 67 kDa).
IHC-P		1/250 - 1/500. Perform heat mediated antigen retrieval with citrate buffer pH 6 before commencing with IHC staining protocol. Perform antigen retrieval before commencing with IHC staining protocol
ICC/IF	★★★★★ (3)	1/100.

Target

Function

Laminin alpha-5 receptor. May mediate intracellular signaling.

Tissue specificity

Wide tissue distribution (highest in the pancreas and very low in brain). Closely associated with the basal layer of cells in epithelia and the endothelium of blood vessel walls.

Sequence similarities

Contains 3 Ig-like C2-type (immunoglobulin-like) domains.
Contains 2 Ig-like V-type (immunoglobulin-like) domains.

Developmental stage

Is under developmental control in liver and may also be regulated during differentiation in other tissues. Up-regulated following malignant transformation in some cell types.

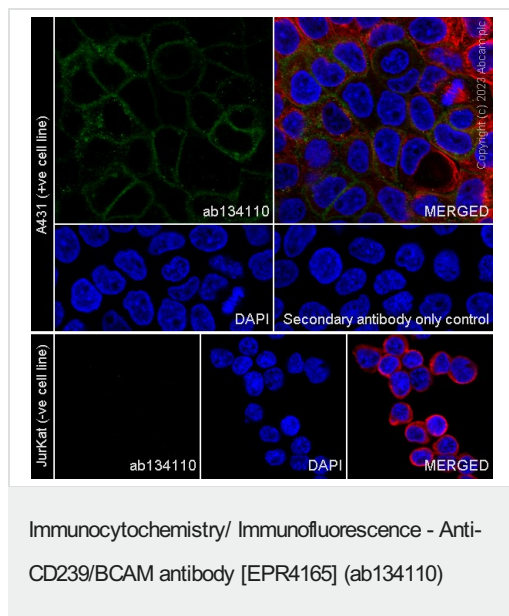
Post-translational modifications

Epinephrine-stimulated phosphorylation of Ser-621 by PKA enhances adhesion to laminin.

Cellular localization

Membrane.

Images

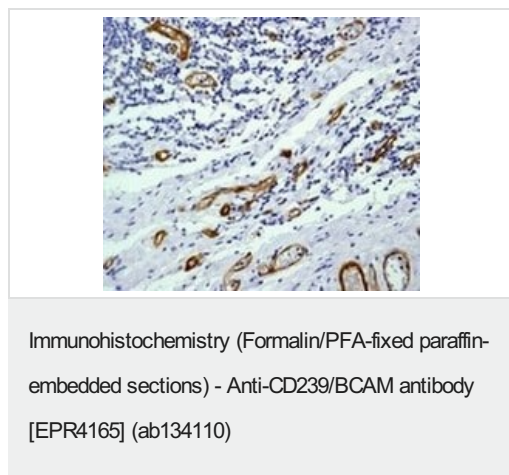


Immunocytochemistry/ Immunofluorescence analysis of A431 (human epidermoid carcinoma epithelial cell) labeling CD239/BCAM with ab134110 at 1/100 dilution followed by **ab150077** at 1/1000 dilution. Cells were fixed with 4% Paraformaldehyde and permeabilised with 0.1% TritonX-100. DAPI was used as nuclear counter stain. Cells were counterstained with **ab195889** at 1/200 dilution.

Confocal image showing mainly membranous staining in A431 cell line.

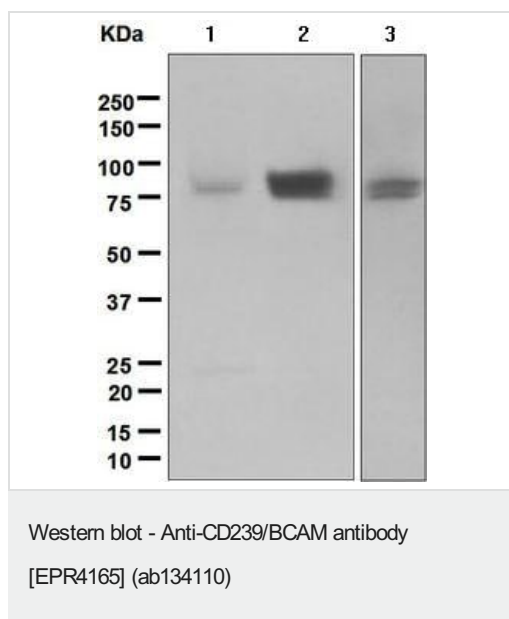
Negative control: JurKat (PMID:30078440)

Image was taken with a confocal microscope (Leica-Microsystems, TCS SP8).



Immunohistochemical analysis of paraffin embedded Human tonsil tissue labelling CD239/BCAM with ab134110 at 1/250.

Perform heat mediated antigen retrieval with citrate buffer pH 6 before commencing with IHC staining protocol.



All lanes : Anti-CD239/BCAM antibody [EPR4165] (ab134110) at 1/1000 dilution

Lane 1 : 293T cell lysate

Lane 2 : HeLa cell lysate

Lane 3 : A431 cell lysate

Lysates/proteins at 10 µg per lane.





Secondary

All lanes : Goat anti-rabbit HRP conjugated antibody at 1/2000 dilution

Predicted band size: 67 kDa

Observed band size: 85 kDa

Why choose a recombinant antibody?

 <p>Research with confidence Consistent and reproducible results</p>	 <p>Long-term and scalable supply Recombinant technology</p>
 <p>Success from the first experiment Confirmed specificity</p>	 <p>Ethical standards compliant Animal-free production</p>

Anti-CD239/BCAM antibody [EPR4165] (ab134110)

Please note: All products are "FOR RESEARCH USE ONLY. NOT FOR USE IN DIAGNOSTIC PROCEDURES"

Our Abpromise to you: Quality guaranteed and expert technical support

- Replacement or refund for products not performing as stated on the datasheet
- Valid for 12 months from date of delivery
- Response to your inquiry within 24 hours
- We provide support in Chinese, English, French, German, Japanese and Spanish
- Extensive multi-media technical resources to help you
- We investigate all quality concerns to ensure our products perform to the highest standards

If the product does not perform as described on this datasheet, we will offer a refund or replacement. For full details of the Abpromise, please visit <https://www.abcam.com/abpromise> or contact our technical team.

Terms and conditions

- Guarantee only valid for products bought direct from Abcam or one of our authorized distributors