


Product datasheet

Anti-CD24 antibody ab214231

[1 References](#) [1 Image](#)

Overview

Product name	Anti-CD24 antibody
Description	Rabbit polyclonal to CD24
Host species	Rabbit
Tested applications	Suitable for: IHC-P
Species reactivity	Reacts with: Mouse Predicted to work with: Rat 
Immunogen	Synthetic peptide within Mouse CD24 aa 1 to the C-terminus conjugated to keyhole limpet haemocyanin. The exact immunogen sequence used to generate this antibody is proprietary information. If additional detail on the immunogen is needed to determine the suitability of the antibody for your needs, please contact our Scientific Support team to discuss your requirements. Database link: P24807
Positive control	IHC-P: Mouse lymphoma tissue.
General notes	<p>The Life Science industry has been in the grips of a reproducibility crisis for a number of years. Abcam is leading the way in addressing this with our range of recombinant monoclonal antibodies and knockout edited cell lines for gold-standard validation. Please check that this product meets your needs before purchasing.</p> <p>If you have any questions, special requirements or concerns, please send us an inquiry and/or contact our Support team ahead of purchase. Recommended alternatives for this product can be found below, along with publications, customer reviews and Q&As</p>

Properties

Form	Liquid
Storage instructions	Shipped at 4°C. Store at +4°C short term (1-2 weeks). Upon delivery aliquot. Store at -20°C long term. Avoid freeze / thaw cycle.
Storage buffer	pH: 7.40 Preservative: 0.02% Proclin 300 Constituents: 50% Glycerol (glycerin, glycerine), 1% BSA, 48.98% TBS, 1X
Purity	Protein A purified
Clonality	Polyclonal

Isotype

IgG

Applications

The Abpromise guarantee

Our **Abpromise guarantee** covers the use of ab214231 in the following tested applications.

The application notes include recommended starting dilutions; optimal dilutions/concentrations should be determined by the end user.

Application	Abreviews	Notes
IHC-P		1/100 - 1/500.

Target

Function

Modulates B-cell activation responses. Signaling could be triggered by the binding of a lectin-like ligand to the CD24 carbohydrates, and transduced by the release of second messengers derived from the GPI-anchor. Promotes AG-dependent proliferation of B-cells, and prevents their terminal differentiation into antibody-forming cells.

Tissue specificity

B-cells. Expressed in a number of B-cell lines including P32/SH and Namalwa. Expressed in erythroleukemia cell and small cell lung carcinoma cell lines. Also expressed on the surface of T-cells.

Involvement in disease

Genetic variations in CD24 are associated with susceptibility to multiple sclerosis (MS) [MIM:126200]. A multifactorial, inflammatory, demyelinating disease of the central nervous system. Sclerotic lesions are characterized by perivascular infiltration of monocytes and lymphocytes and appear as indurated areas in pathologic specimens (sclerosis in plaques). The pathological mechanism is regarded as an autoimmune attack of the myelin sheath, mediated by both cellular and humoral immunity. Clinical manifestations include visual loss, extra-ocular movement disorders, paresthesias, loss of sensation, weakness, dysarthria, spasticity, ataxia and bladder dysfunction. Genetic and environmental factors influence susceptibility to the disease. Note=Polymorphisms in CD24 may act as a genetic modifier for susceptibility and progression of MS in some populations, perhaps by affecting the efficiency of CD24 expression on the cell surface.

Sequence similarities

Belongs to the CD24 family.

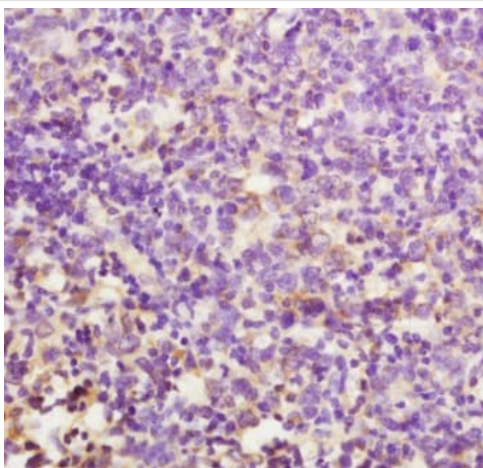
Post-translational modifications

Extensively O-glycosylated.

Cellular localization

Cell membrane.

Images



Immunohistochemistry (Formalin/PFA-fixed paraffin-embedded sections) - Anti-CD24 antibody (ab214231)

Immunohistochemical analysis of formalin-fixed, paraffin-embedded mouse lymphoma tissue section labeling CD24 using ab214231 at a 1/200 dilution, followed by conjugation to the secondary antibody.

Please note: All products are "FOR RESEARCH USE ONLY. NOT FOR USE IN DIAGNOSTIC PROCEDURES"

Our Abpromise to you: Quality guaranteed and expert technical support

- Replacement or refund for products not performing as stated on the datasheet
- Valid for 12 months from date of delivery
- Response to your inquiry within 24 hours
- We provide support in Chinese, English, French, German, Japanese and Spanish
- Extensive multi-media technical resources to help you
- We investigate all quality concerns to ensure our products perform to the highest standards

If the product does not perform as described on this datasheet, we will offer a refund or replacement. For full details of the Abpromise, please visit <https://www.abcam.com/abpromise> or contact our technical team.

Terms and conditions

- Guarantee only valid for products bought direct from Abcam or one of our authorized distributors