

Product datasheet

Anti-CD24 antibody [EPR3006(N)] α b179821

Recombinant **RabMAb**

[14 References](#) [3 Images](#)

Overview

Product name	Anti-CD24 antibody [EPR3006(N)]
Description	Rabbit monoclonal [EPR3006(N)] to CD24
Host species	Rabbit
Tested applications	Suitable for: WB, IP Unsuitable for: Flow Cyt, ICC/IF or IHC-P
Species reactivity	Reacts with: Human Does not react with: Mouse, Rat
Immunogen	Synthetic peptide. This information is proprietary to Abcam and/or its suppliers.
Positive control	Human fetal brain, SH-SY5Y cell and human oligodendroglioma lysates.
General notes	This product is a recombinant monoclonal antibody, which offers several advantages including: <ul style="list-style-type: none"> - High batch-to-batch consistency and reproducibility - Improved sensitivity and specificity - Long-term security of supply - Animal-free production For more information see here . Our RabMAb [®] technology is a patented hybridoma-based technology for making rabbit monoclonal antibodies. For details on our patents, please refer to RabMAb[®] patents .

Properties

Form	Liquid
Storage instructions	Shipped at 4°C. Store at +4°C short term (1-2 weeks). Upon delivery aliquot. Store at -20°C long term. Avoid freeze / thaw cycle.
Storage buffer	pH: 7.20 Preservative: 0.01% Sodium azide Constituents: 9% PBS, 40% Glycerol (glycerin, glycerine), 0.05% BSA, 50% Tissue culture supernatant
Purity	Tissue culture supernatant
Clonality	Monoclonal
Clone number	EPR3006(N)

Isotype

IgG

Applications

The Abpromise guarantee

Our **Abpromise guarantee** covers the use of ab179821 in the following tested applications.

The application notes include recommended starting dilutions; optimal dilutions/concentrations should be determined by the end user.

Application	Abreviews	Notes
WB		1/1000 - 1/10000. Predicted molecular weight: 8 kDa.
IP		1/10 - 1/100.

Application notes

Is unsuitable for Flow Cyt, ICC/IF or IHC-P.

Target

Function

Modulates B-cell activation responses. Signaling could be triggered by the binding of a lectin-like ligand to the CD24 carbohydrates, and transduced by the release of second messengers derived from the GPI-anchor. Promotes AG-dependent proliferation of B-cells, and prevents their terminal differentiation into antibody-forming cells.

Tissue specificity

B-cells. Expressed in a number of B-cell lines including P32/SH and Namalwa. Expressed in erythroleukemia cell and small cell lung carcinoma cell lines. Also expressed on the surface of T-cells.

Involvement in disease

Genetic variations in CD24 are associated with susceptibility to multiple sclerosis (MS) [MIM:126200]. A multifactorial, inflammatory, demyelinating disease of the central nervous system. Sclerotic lesions are characterized by perivascular infiltration of monocytes and lymphocytes and appear as indurated areas in pathologic specimens (sclerosis in plaques). The pathological mechanism is regarded as an autoimmune attack of the myelin sheath, mediated by both cellular and humoral immunity. Clinical manifestations include visual loss, extra-ocular movement disorders, paresthesias, loss of sensation, weakness, dysarthria, spasticity, ataxia and bladder dysfunction. Genetic and environmental factors influence susceptibility to the disease. Note=Polymorphisms in CD24 may act as a genetic modifier for susceptibility and progression of MS in some populations, perhaps by affecting the efficiency of CD24 expression on the cell surface.

Sequence similarities

Belongs to the CD24 family.

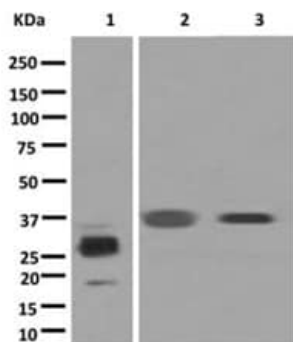
Post-translational modifications

Extensively O-glycosylated.

Cellular localization

Cell membrane.

Images



Western blot - Anti-CD24 antibody [EPR3006(N)] (ab179821)

All lanes : Anti-CD24 antibody [EPR3006(N)] (ab179821) at 1/1000 dilution

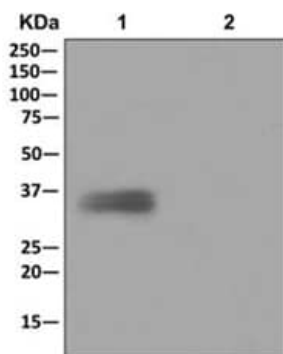
Lane 1 : fetal brain lysate

Lane 2 : SH-SY5Y cell lysate

Lane 3 : human oligodendrogloma lysate

Lysates/proteins at 10 µg per lane.

Predicted band size: 8 kDa



Immunoprecipitation - Anti-CD24 antibody [EPR3006(N)] (ab179821)

Western blot analysis on immunoprecipitation pellet from (1) SH-SY5Y cell lysate or (2) 1X PBS (negative control) labeling CD24 using ab179821 at 1/10 dilution, and HRP-conjugated anti-rabbit IgG preferentially detecting the non-reduced form of rabbit IgG.

Why choose a recombinant antibody?



Research with confidence
Consistent and reproducible results



Long-term and scalable supply
Recombinant technology



Success from the first experiment
Confirmed specificity



Ethical standards compliant
Animal-free production

Anti-CD24 antibody [EPR3006(N)] (ab179821)

Our Abpromise to you: Quality guaranteed and expert technical support

- Replacement or refund for products not performing as stated on the datasheet
- Valid for 12 months from date of delivery
- Response to your inquiry within 24 hours
- We provide support in Chinese, English, French, German, Japanese and Spanish
- Extensive multi-media technical resources to help you
- We investigate all quality concerns to ensure our products perform to the highest standards

If the product does not perform as described on this datasheet, we will offer a refund or replacement. For full details of the Abpromise, please visit <https://www.abcam.com/abpromise> or contact our technical team.

Terms and conditions

- Guarantee only valid for products bought direct from Abcam or one of our authorized distributors