


Product datasheet

Anti-CD27 antibody [EPR21209] ab213318

Recombinant

2 Images

Overview

Product name	Anti-CD27 antibody [EPR21209]
Description	Rabbit monoclonal [EPR21209] to CD27
Host species	Rabbit
Tested applications	Suitable for: Flow Cyt Unsuitable for: IHC-P
Species reactivity	Reacts with: Human Predicted to work with: Baboon, Macaque monkey, Gorilla 
Immunogen	Recombinant fragment (His-tag) corresponding to Human CD27 aa 1-200. Database link: P26842
Positive control	Flow Cyt: Daudi cells
General notes	This product is an in vitro raised antibody. It was made using <u>synthetic libraries and phage display technology</u> . This antibody is a recombinant chimeric antibody. Rabbit chimeric monoclonal antibody (Human Fab/ Rabbit Fc).

Properties

Form	Liquid
Storage instructions	Shipped at 4°C. Store at +4°C short term (1-2 weeks). Upon delivery aliquot. Store at -20°C long term. Avoid freeze / thaw cycle.
Storage buffer	Preservative: 0.02% Sodium azide Constituents: PBS, 1% BSA
Clonality	Monoclonal
Clone number	EPR21209
Isotype	IgG1

Applications

The Abpromise guarantee

Our **Abpromise guarantee** covers the use of ab213318 in the following tested applications.

The application notes include recommended starting dilutions; optimal dilutions/concentrations should be determined by the end user.

Application	Abreviews	Notes
Flow Cyt		1/10.

Application notes Is unsuitable for IHC-P.

Target

Function Receptor for CD70/CD27L. May play a role in survival of activated T-cells. May play a role in apoptosis through association with SIVA1.

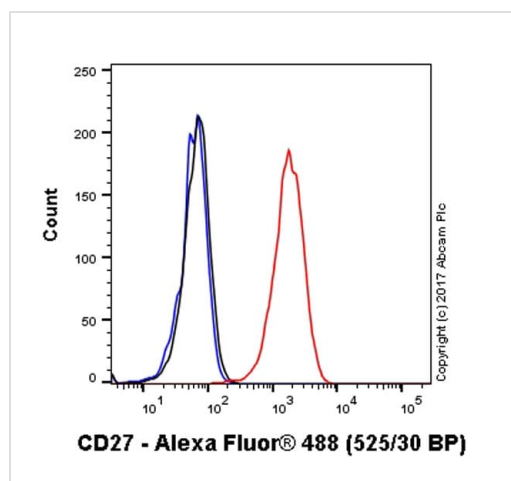
Tissue specificity Found in most T-lymphocytes.

Sequence similarities Contains 3 TNFR-Cys repeats.

Post-translational modifications Phosphorylated and O-glycosylated.

Cellular localization Membrane.

Images



Overlay histogram showing Daudi cells stained with ab213318 (red line). The cells were incubated in 1x PBS / 10% normal goat serum to block non-specific protein-protein interactions followed by the antibody (ab213318, 1/10 dilution) for 30 min at 4°C. The secondary antibody (black line) used was Alexa Fluor® 488 goat anti-rabbit IgG (H&L) ([ab150081](#)) at 1/2000 dilution for 30 min at 4°C. Unlabelled sample (blue line) was also used as a control.

Acquisition of >30,000 total events were collected.

Flow Cytometry - Anti-CD27 antibody [EPR21209]
(ab213318)

Why choose a recombinant antibody?



Research with confidence
Consistent and reproducible results



Long-term and scalable supply
Recombinant technology



Success from the first experiment
Confirmed specificity



Ethical standards compliant
Animal-free production

Anti-CD27 antibody [EPR21209] (ab213318)

Please note: All products are "FOR RESEARCH USE ONLY. NOT FOR USE IN DIAGNOSTIC PROCEDURES"

Our Abpromise to you: Quality guaranteed and expert technical support

- Replacement or refund for products not performing as stated on the datasheet
- Valid for 12 months from date of delivery
- Response to your inquiry within 24 hours
- We provide support in Chinese, English, French, German, Japanese and Spanish
- Extensive multi-media technical resources to help you
- We investigate all quality concerns to ensure our products perform to the highest standards

If the product does not perform as described on this datasheet, we will offer a refund or replacement. For full details of the Abpromise, please visit <https://www.abcam.com/abpromise> or contact our technical team.

Terms and conditions

- Guarantee only valid for products bought direct from Abcam or one of our authorized distributors