


Product datasheet

Anti-CD276 antibody ab226256

★★★★★ [1 Abreviews](#) [4 References](#) [3 Images](#)

Overview

Product name	Anti-CD276 antibody
Description	Rabbit polyclonal to CD276
Host species	Rabbit
Tested applications	Suitable for: ICC, IP, IHC-P
Species reactivity	Reacts with: Human Predicted to work with: Mouse, Rat 
Immunogen	Synthetic peptide within Human CD276 aa 484-534. The exact sequence is proprietary. (NP_001019907.1). Database link: Q5ZPR3
Positive control	IP: HeLa whole cell lysate (ab150035). IHC-P: Human prostate carcinoma tissue ICC: MCF7 cells; CD276 transfected HEK-293 cells.
General notes	<p>The Life Science industry has been in the grips of a reproducibility crisis for a number of years. Abcam is leading the way in addressing this with our range of recombinant monoclonal antibodies and knockout edited cell lines for gold-standard validation. Please check that this product meets your needs before purchasing.</p> <p>If you have any questions, special requirements or concerns, please send us an inquiry and/or contact our Support team ahead of purchase. Recommended alternatives for this product can be found below, along with publications, customer reviews and Q&As</p>

Properties

Form	Liquid
Storage instructions	Shipped at 4°C. Store at +4°C short term (1-2 weeks). Upon delivery aliquot. Store at -20°C long term. Avoid freeze / thaw cycle.
Storage buffer	pH: 7 Preservative: 0.09% Sodium azide Constituent: Tris citrate/phosphate pH 7 to 8
Purity	Immunogen affinity purified
Purification notes	ab226256 was affinity purified using an epitope specific to CD276 immobilized on solid support.

Clonality	Polyclonal
Isotype	IgG

Applications

The Abpromise guarantee Our **Abpromise guarantee** covers the use of ab226256 in the following tested applications.

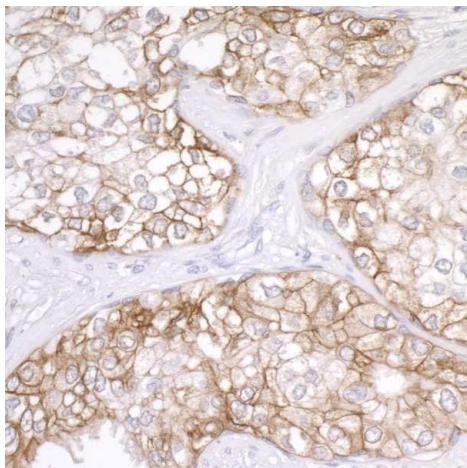
The application notes include recommended starting dilutions; optimal dilutions/concentrations should be determined by the end user.

Application	Abreviews	Notes
ICC		1/5000.
IP		Use at 2-10 µg/mg of lysate.
IHC-P		1/2000 - 1/10000. Perform heat mediated antigen retrieval with citrate buffer pH 6 before commencing with IHC staining protocol.

Target

Function	May participate in the regulation of T-cell-mediated immune response. May play a protective role in tumor cells by inhibiting natural-killer mediated cell lysis as well as a role of marker for detection of neuroblastoma cells. May be involved in the development of acute and chronic transplant rejection and in the regulation of lymphocytic activity at mucosal surfaces. Could also play a key role in providing the placenta and fetus with a suitable immunological environment throughout pregnancy. Both isoform 1 and isoform 2 appear to be redundant in their ability to modulate CD4 T-cell responses. Isoform 2 is shown to enhance the induction of cytotoxic T-cells and selectively stimulates interferon gamma production in the presence of T-cell receptor signaling.
Tissue specificity	Ubiquitous but not detectable in peripheral blood lymphocytes or granulocytes. Weakly expressed in resting monocytes. Expressed in dendritic cells derived from monocytes. Expressed in epithelial cells of sinonasal tissue. Expressed in extravillous trophoblast cells and Hofbauer cells of the first trimester placenta and term placenta.
Sequence similarities	Belongs to the immunoglobulin superfamily. BTN/MOG family. Contains 2 Ig-like C2-type (immunoglobulin-like) domains. Contains 2 Ig-like V-type (immunoglobulin-like) domains.
Cellular localization	Membrane.

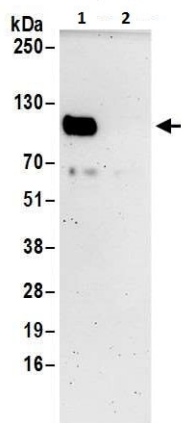
Images



Immunohistochemistry (Formalin/PFA-fixed paraffin-embedded sections) - Anti-CD276 antibody (ab226256)

Formalin-fixed, paraffin-embedded human prostate carcinoma tissue stained for CD276 using ab226256 at 1/5000 dilution in immunohistochemical analysis.

Detection: DAB staining. Counterstain: Hematoxylin.



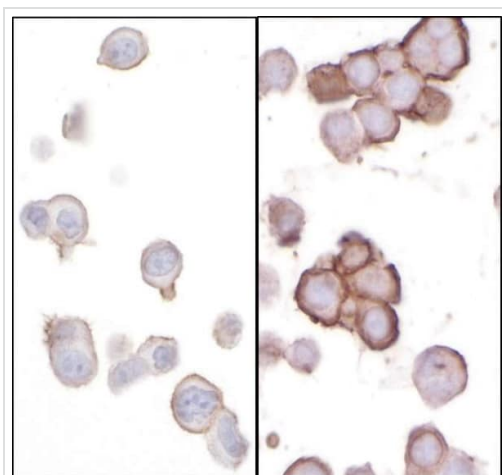
Immunoprecipitation - Anti-CD276 antibody (ab226256)

CD276 was immunoprecipitated from HeLa (human epithelial cell line from cervix adenocarcinoma) whole cell lysate (prepared using NETN buffer; 1 mg for IP, 20% of IP loaded) with ab226256 at 6 $\mu\text{g}/\text{mg}$ lysate. Western blot was performed from the immunoprecipitate using a different rabbit anti-CD276 antibody at 1 $\mu\text{g}/\text{ml}$.

Lane 1: ab226256 IP in HeLa whole cell lysate.

Lane 2: Control IgG IP in HeLa whole cell lysate.

Detection: Chemiluminescence with exposure time of 3 minutes.



Immunocytochemistry - Anti-CD276 antibody
(ab226256)

MCF7 (human breast adenocarcinoma cell line) (left panel) and CD276 transfected HEK-293 (human epithelial cell line from embryonic kidney) (right panel) cells stained for CD276 using ab226256 at 1/5000 dilution in immunohistochemical analysis.

Detection: DAB staining.

Please note: All products are "FOR RESEARCH USE ONLY. NOT FOR USE IN DIAGNOSTIC PROCEDURES"

Our Abpromise to you: Quality guaranteed and expert technical support

- Replacement or refund for products not performing as stated on the datasheet
- Valid for 12 months from date of delivery
- Response to your inquiry within 24 hours
- We provide support in Chinese, English, French, German, Japanese and Spanish
- Extensive multi-media technical resources to help you
- We investigate all quality concerns to ensure our products perform to the highest standards

If the product does not perform as described on this datasheet, we will offer a refund or replacement. For full details of the Abpromise, please visit <https://www.abcam.com/abpromise> or contact our technical team.

Terms and conditions

- Guarantee only valid for products bought direct from Abcam or one of our authorized distributors