


Product datasheet

Anti-CD276 antibody [SP265] - C-terminal ab227679

KO **VALIDATED** Recombinant RabMAB

[2 References](#) [15 Images](#)

Overview

Product name	Anti-CD276 antibody [SP265] - C-terminal
Description	Rabbit monoclonal [SP265] to CD276 - C-terminal
Host species	Rabbit
Tested applications	Suitable for: ICC/IF, IHC-P, WB, Flow Cyt
Species reactivity	Reacts with: Human Predicted to work with: Mouse, Rat 
Immunogen	Synthetic peptide. This information is proprietary to Abcam and/or its suppliers.
Positive control	WB: Hs 700T cell lysate. IHC-P: Human ovarian adenocarcinoma, lung squamous cell carcinoma, renal cell carcinoma, liver hepatoma, bladder transitional cell carcinoma, cervical squamous cell carcinoma, skin squamous cell carcinoma, skin melanoma, Hodgkin's lymphoma and prostate adenocarcinoma tissue. Flow cytometry: PC-3 cells. ICC: HEK293 and LNCaP cells
General notes	This product is FOR RESEARCH USE ONLY. For commercial use, please contact partnerships@abcam.com.

Properties

Form	Liquid
Storage instructions	Shipped at 4°C. Store at +4°C short term (1-2 weeks). Upon delivery aliquot. Store at -20°C long term. Avoid freeze / thaw cycle.
Storage buffer	pH: 7.60 Preservative: 0.1% Sodium azide Constituents: PBS, 1% BSA
Purity	Protein A/G purified
Purification notes	Purified from TCS by protein A/G.
Clonality	Monoclonal
Clone number	SP265
Isotype	IgG

Applications

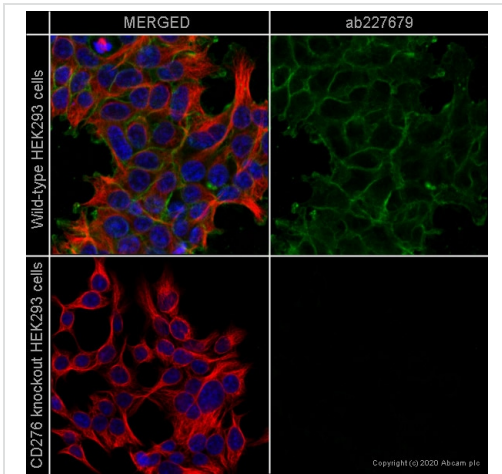
The Abpromise guarantee Our **Abpromise guarantee** covers the use of ab227679 in the following tested applications. The application notes include recommended starting dilutions; optimal dilutions/concentrations should be determined by the end user.

Application	Abreviews	Notes
ICC/IF		1/25 - 1/100.
IHC-P		1/100. For antigen retrieval: Boil tissue section in EDTA buffer, pH 8.0 for 10 minutes followed by cooling at room temperature for 20 minutes.
WB		1/100. Predicted molecular weight: 57 kDa.
Flow Cyt		1/400.

Target

Function	May participate in the regulation of T-cell-mediated immune response. May play a protective role in tumor cells by inhibiting natural-killer mediated cell lysis as well as a role of marker for detection of neuroblastoma cells. May be involved in the development of acute and chronic transplant rejection and in the regulation of lymphocytic activity at mucosal surfaces. Could also play a key role in providing the placenta and fetus with a suitable immunological environment throughout pregnancy. Both isoform 1 and isoform 2 appear to be redundant in their ability to modulate CD4 T-cell responses. Isoform 2 is shown to enhance the induction of cytotoxic T-cells and selectively stimulates interferon gamma production in the presence of T-cell receptor signaling.
Tissue specificity	Ubiquitous but not detectable in peripheral blood lymphocytes or granulocytes. Weakly expressed in resting monocytes. Expressed in dendritic cells derived from monocytes. Expressed in epithelial cells of sinonasal tissue. Expressed in extravillous trophoblast cells and Hofbauer cells of the first trimester placenta and term placenta.
Sequence similarities	Belongs to the immunoglobulin superfamily. BTN/MOG family. Contains 2 Ig-like C2-type (immunoglobulin-like) domains. Contains 2 Ig-like V-type (immunoglobulin-like) domains.
Cellular localization	Membrane.

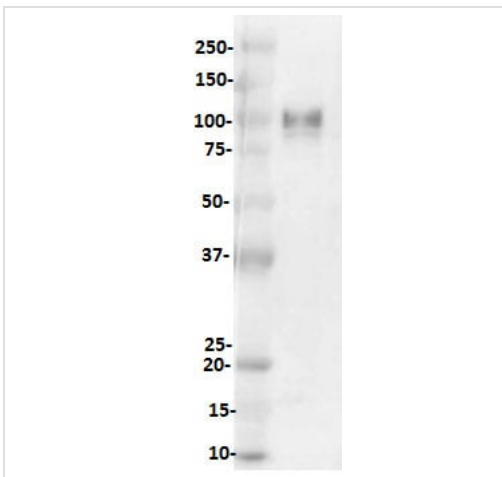
Images



Immunocytochemistry/ Immunofluorescence - Anti-CD276 antibody [SP265] - C-terminal (ab227679)

ab227679 staining CD276 in wild-type HEK293 cells (top panel) and CD276 knockout HEK293 cells (**ab266658**) (bottom panel). The cells were fixed with 100% methanol (5 min) then permeabilized with 0.1% Triton X-100 for 5 minutes and then blocked with 1% BSA/10% normal goat serum/0.3M glycine in 0.1% PBS-Tween for 1h. The cells were then incubated with ab227679 at 1/100 dilution and **ab7291** (Mouse monoclonal to alpha Tubulin) at 1/1000 dilution overnight at 4°C followed by a further incubation at room temperature for 1h with a goat secondary antibody to rabbit IgG (Alexa Fluor® 488) (**ab150081**) at 2 µg/ml (shown in green) and a goat secondary antibody to mouse IgG (Alexa Fluor® 594) (**ab150120**) at 2 µg/ml (shown in red). Nuclear DNA was labelled in blue with DAPI.

Image was taken with a confocal microscope (Leica-Microsystems TCS SP8).

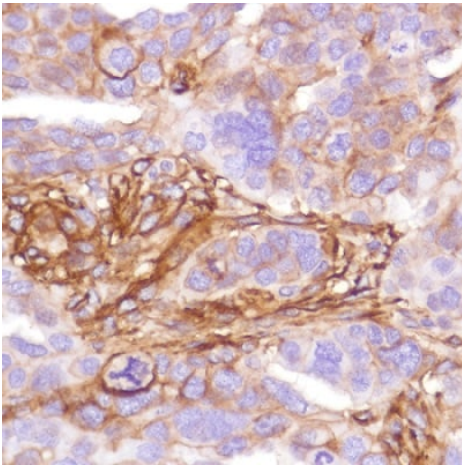


Western blot - Anti-CD276 antibody [SP265] - C-terminal (ab227679)

Anti-CD276 antibody [SP265] - C-terminal (ab227679) at 1/100 dilution + Hs 700T (human pancreatic adenocarcinoma cell line) cell lysate

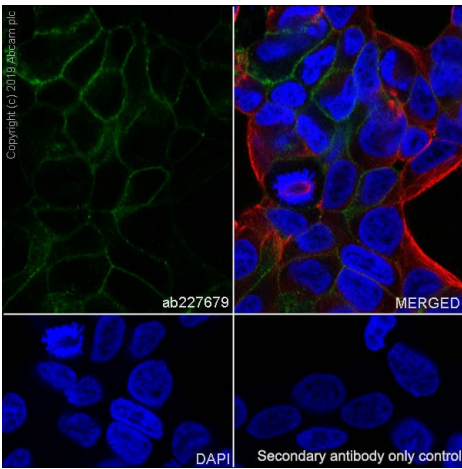
Developed using the ECL technique.

Predicted band size: 57 kDa



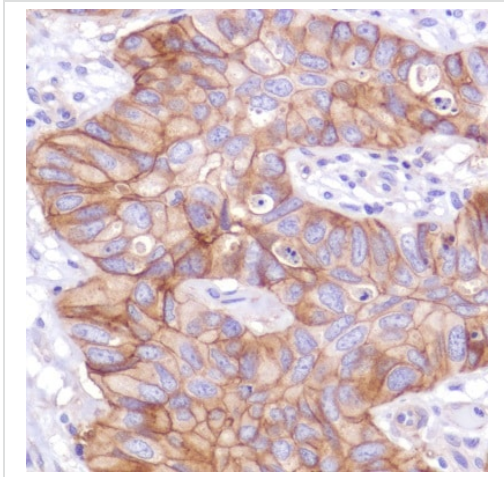
Formalin-fixed, paraffin-embedded human ovarian adenocarcinoma tissue stained for CD276 with ab227679 at 1/100 dilution in immunohistochemical analysis.

Immunohistochemistry (Formalin/PFA-fixed paraffin-embedded sections) - Anti-CD276 antibody [SP265] - C-terminal (ab227679)



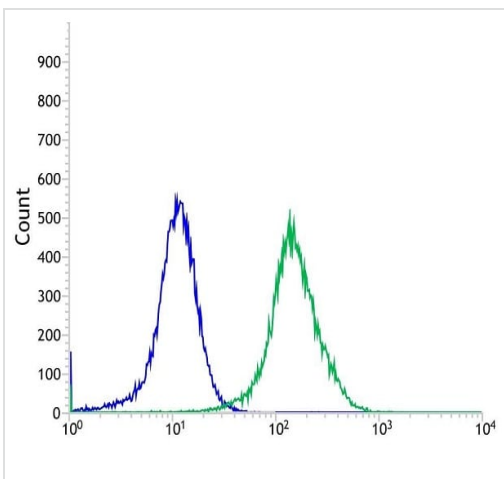
Immunocytochemistry/ Immunofluorescence analysis of LNCaP (Human prostate carcinoma epithelial cell) cells labeling CD276 with purified ab227679 at 1/25 (9.24 µg/ml). Cells were fixed in 4% paraformaldehyde and permeabilized with 0.1% Triton X-100. Cells were counterstained with **ab195889** Anti-alpha Tubulin antibody [DM1A] - Microtubule Marker (Alexa Fluor® 594) 1/200 (2.5 µg/ml). Goat anti rabbit IgG (Alexa Fluor® 488, **ab150077**) was used as the secondary antibody at 1/1000 (2 µg/ml) dilution. DAPI (blue) was used as nuclear counterstain. PBS instead of the primary antibody was used as the secondary antibody only control.

Immunocytochemistry/ Immunofluorescence - Anti-CD276 antibody [SP265] - C-terminal (ab227679)



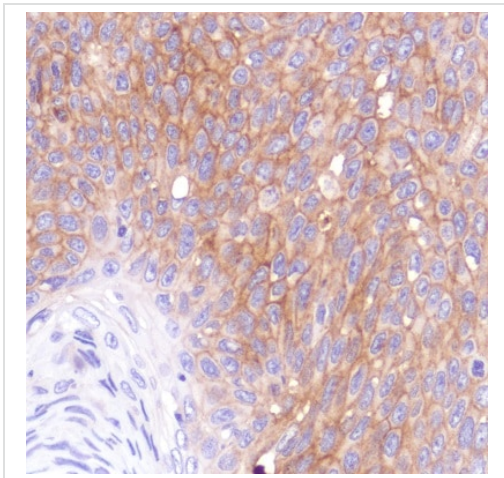
Formalin-fixed, paraffin-embedded human bladder transitional cell carcinoma tissue stained for CD276 with ab227679 at 1/100 dilution in immunohistochemical analysis.

Immunohistochemistry (Formalin/PFA-fixed paraffin-embedded sections) - Anti-CD276 antibody [SP265] - C-terminal (ab227679)



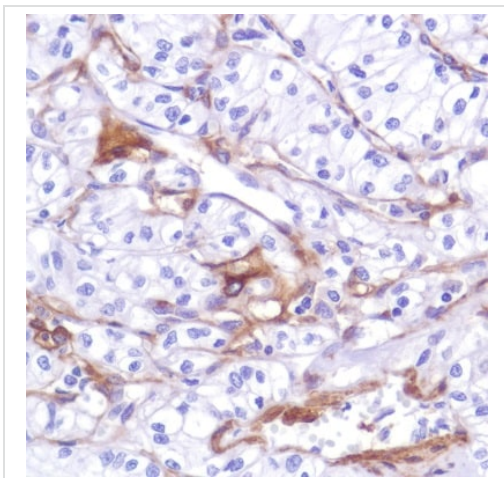
Flow cytometric analysis of PC-3 (human prostate adenocarcinoma cell line) cell line labeling CC276 with ab227679 at 1/400 (green) compared with a rabbit isotype control (blue).

Flow Cytometry - Anti-CD276 antibody [SP265] - C-terminal (ab227679)



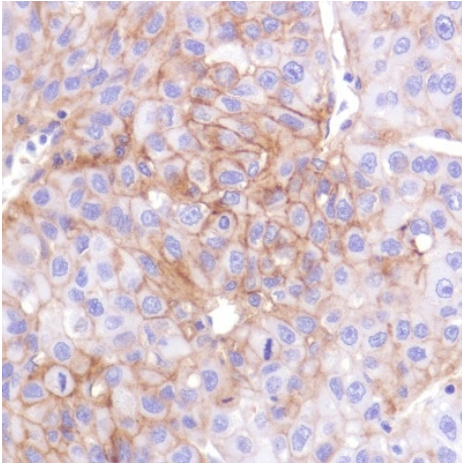
Formalin-fixed, paraffin-embedded human lung squamous cell carcinoma tissue stained for CD276 with ab227679 at 1/100 dilution in immunohistochemical analysis.

Immunohistochemistry (Formalin/PFA-fixed paraffin-embedded sections) - Anti-CD276 antibody [SP265]
- C-terminal (ab227679)



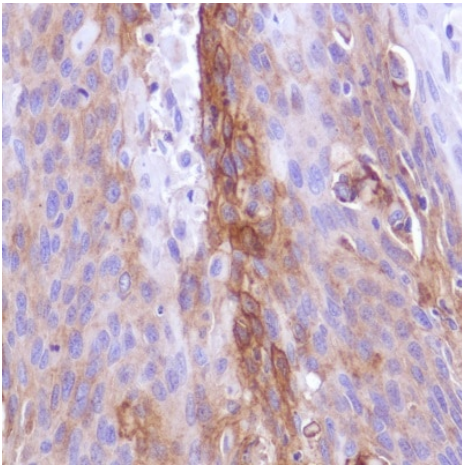
Formalin-fixed, paraffin-embedded human renal cell carcinoma tissue stained for CD276 with ab227679 at 1/100 dilution in immunohistochemical analysis.

Immunohistochemistry (Formalin/PFA-fixed paraffin-embedded sections) - Anti-CD276 antibody [SP265]
- C-terminal (ab227679)



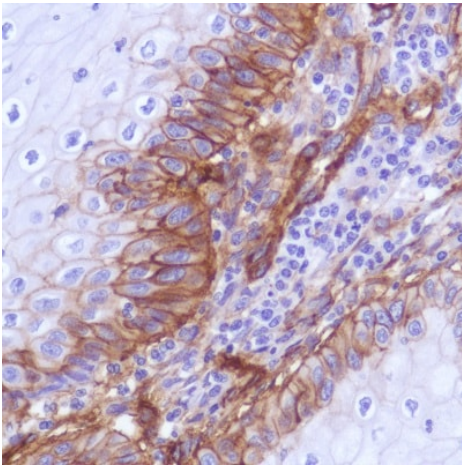
Formalin-fixed, paraffin-embedded human liver hepatoma tissue stained for CD276 with ab227679 at 1/100 dilution in immunohistochemical analysis.

Immunohistochemistry (Formalin/PFA-fixed paraffin-embedded sections) - Anti-CD276 antibody [SP265]
- C-terminal (ab227679)



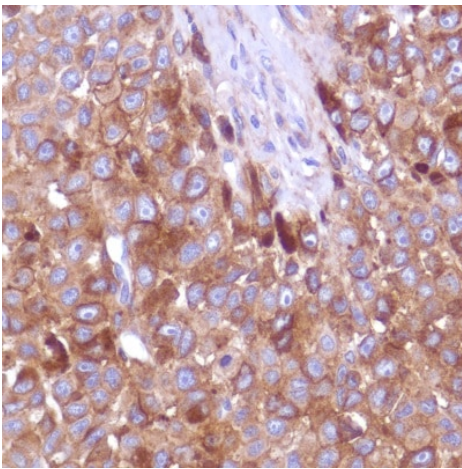
Formalin-fixed, paraffin-embedded human cervical squamous cell carcinoma tissue stained for CD276 with ab227679 at 1/100 dilution in immunohistochemical analysis.

Immunohistochemistry (Formalin/PFA-fixed paraffin-embedded sections) - Anti-CD276 antibody [SP265]
- C-terminal (ab227679)



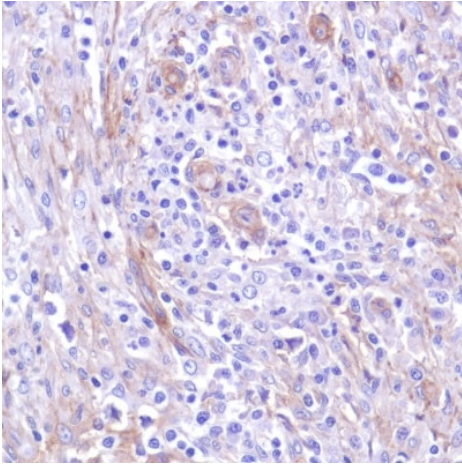
Formalin-fixed, paraffin-embedded human skin squamous cell carcinoma tissue stained for CD276 with ab227679 at 1/100 dilution in immunohistochemical analysis.

Immunohistochemistry (Formalin/PFA-fixed paraffin-embedded sections) - Anti-CD276 antibody [SP265]
- C-terminal (ab227679)



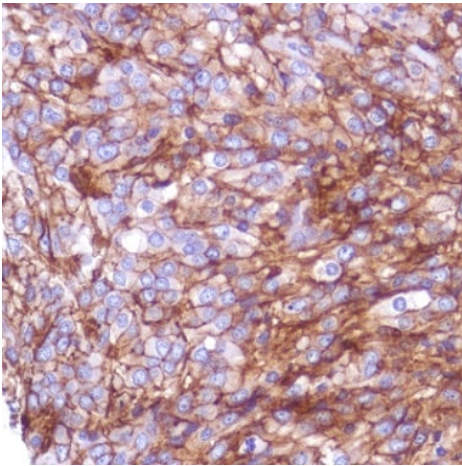
Formalin-fixed, paraffin-embedded human skin melanoma tissue stained for CD276 with ab227679 at 1/100 dilution in immunohistochemical analysis.

Immunohistochemistry (Formalin/PFA-fixed paraffin-embedded sections) - Anti-CD276 antibody [SP265]
- C-terminal (ab227679)



Formalin-fixed, paraffin-embedded human Hodgkin's lymphoma tissue stained for CD276 with ab227679 at 1/100 dilution in immunohistochemical analysis.

Immunohistochemistry (Formalin/PFA-fixed paraffin-embedded sections) - Anti-CD276 antibody [SP265]
- C-terminal (ab227679)



Formalin-fixed, paraffin-embedded human prostate adenocarcinoma tissue stained for CD276 with ab227679 at 1/100 dilution in immunohistochemical analysis.

Immunohistochemistry (Formalin/PFA-fixed paraffin-embedded sections) - Anti-CD276 antibody [SP265]
- C-terminal (ab227679)

Why choose a recombinant antibody?



Research with confidence
Consistent and reproducible results



Long-term and scalable supply
Recombinant technology



Success from the first experiment
Confirmed specificity



Ethical standards compliant
Animal-free production

Anti-CD276 antibody [SP265] - C-terminal
(ab227679)

Please note: All products are "FOR RESEARCH USE ONLY. NOT FOR USE IN DIAGNOSTIC PROCEDURES"

Our Abpromise to you: Quality guaranteed and expert technical support

- Replacement or refund for products not performing as stated on the datasheet
- Valid for 12 months from date of delivery
- Response to your inquiry within 24 hours
- We provide support in Chinese, English, French, German, Japanese and Spanish
- Extensive multi-media technical resources to help you
- We investigate all quality concerns to ensure our products perform to the highest standards

If the product does not perform as described on this datasheet, we will offer a refund or replacement. For full details of the Abpromise, please visit <https://www.abcam.com/abpromise> or contact our technical team.

Terms and conditions

- Guarantee only valid for products bought direct from Abcam or one of our authorized distributors