

Product datasheet

Anti-CD3 antibody [KT3] ab33429

★★★★★ [3 Abreviews](#) [6 References](#) [1 Image](#)

Overview

Product name	Anti-CD3 antibody [KT3]
Description	Rat monoclonal [KT3] to CD3
Host species	Rat
Tested applications	Suitable for: IHC-Fr, ICC/IF, Flow Cyt Unsuitable for: IHC-P
Species reactivity	Reacts with: Mouse
Immunogen	Tissue, cells or virus corresponding to Mouse CD3. mature T cells (Mouse)
General notes	

ab33429 may be used to trigger proliferation and cytotoxicity of CD3 positive cells.

The Life Science industry has been in the grips of a reproducibility crisis for a number of years. Abcam is leading the way in addressing this with our range of recombinant monoclonal antibodies and knockout edited cell lines for gold-standard validation. Please check that this product meets your needs before purchasing.

If you have any questions, special requirements or concerns, please send us an inquiry and/or contact our Support team ahead of purchase. Recommended alternatives for this product can be found below, along with publications, customer reviews and Q&As

Properties

Form	Liquid
Storage instructions	Shipped at 4°C. Store at +4°C short term (1-2 weeks). Upon delivery aliquot. Store at -20°C long term.
Storage buffer	pH: 7.40 Preservative: 0.09% Sodium azide Constituent: PBS
Purity	Protein G purified
Purification notes	Purified from tissue culture supernatant.
Primary antibody notes	ab33429 may be used to trigger proliferation and cytotoxicity of CD3 positive cells.
Clonality	Monoclonal
Clone number	KT3

Myeloma NS0
Isotype IgG2a

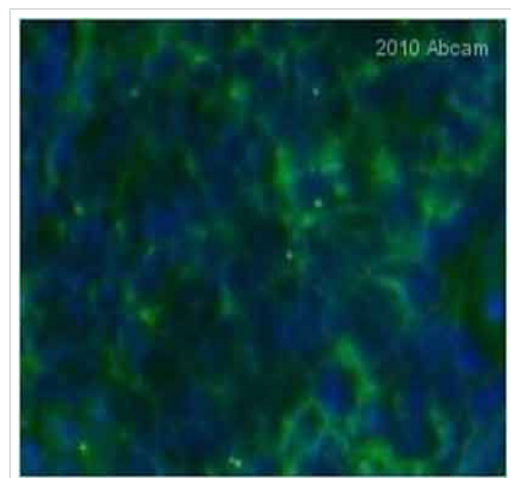
Applications

The Abpromise guarantee Our **Abpromise guarantee** covers the use of ab33429 in the following tested applications. The application notes include recommended starting dilutions; optimal dilutions/concentrations should be determined by the end user.

Application	Abreviews	Notes
IHC-Fr	★★★★☆ (1)	Use at an assay dependent concentration.
ICC/IF	★★★★★ (1)	Use at an assay dependent concentration.
Flow Cyt		Use at an assay dependent concentration. ab18450 - Rat monoclonal IgG2a, is suitable for use as an isotype control with this antibody.

Application notes Is unsuitable for IHC-P.

Images



Immunohistochemistry (Frozen sections) - Anti-CD3 antibody [KT3] (ab33429)

Image courtesy of an anonymous Abreview

ab33429 staining CD3 in mouse spleen tissue by Immunohistochemistry (frozen sections). Tissue was fixed with acetone and then blocked with 5% serum for 1 hour at 25°C followed by incubation with the primary antibody at a 1/250 dilution for 12 hours at 4°C. A goat anti-rat IgG conjugated to Alexa Fluor®488 was used as secondary antibody at a 1/250 dilution.

Please note: All products are "FOR RESEARCH USE ONLY. NOT FOR USE IN DIAGNOSTIC PROCEDURES"

Our Abpromise to you: Quality guaranteed and expert technical support

- Replacement or refund for products not performing as stated on the datasheet
- Valid for 12 months from date of delivery
- Response to your inquiry within 24 hours

- We provide support in Chinese, English, French, German, Japanese and Spanish
- Extensive multi-media technical resources to help you
- We investigate all quality concerns to ensure our products perform to the highest standards

If the product does not perform as described on this datasheet, we will offer a refund or replacement. For full details of the Abpromise, please visit <https://www.abcam.com/abpromise> or contact our technical team.

Terms and conditions

- Guarantee only valid for products bought direct from Abcam or one of our authorized distributors