


### Anti-CD3 epsilon antibody [C3e/2478] ab238084

2 Images

#### Overview

<b>Product name</b>	Anti-CD3 epsilon antibody [C3e/2478]
<b>Description</b>	Mouse monoclonal [C3e/2478] to CD3 epsilon
<b>Host species</b>	Mouse
<b>Tested applications</b>	<b>Suitable for:</b> Protein Array, IHC-P
<b>Species reactivity</b>	<b>Reacts with:</b> Human <b>Predicted to work with:</b> Chimpanzee 
<b>Immunogen</b>	Recombinant fragment within Human CD3 epsilon aa 23-119. The exact sequence is proprietary. Database link: <a href="#">P07766</a>
<b>Positive control</b>	IHC-P: Human spleen tissue.
<b>General notes</b>	<p>The Life Science industry has been in the grips of a reproducibility crisis for a number of years. Abcam is leading the way in addressing this with our range of recombinant monoclonal antibodies and knockout edited cell lines for gold-standard validation. Please check that this product meets your needs before purchasing.</p> <p>If you have any questions, special requirements or concerns, please send us an inquiry and/or contact our Support team ahead of purchase. Recommended alternatives for this product can be found below, along with publications, customer reviews and Q&amp;As</p>

#### Properties

<b>Form</b>	Liquid
<b>Storage instructions</b>	Shipped at 4°C. Store at +4°C short term (1-2 weeks). Upon delivery aliquot. Store at -20°C long term. Avoid freeze / thaw cycle.
<b>Storage buffer</b>	pH: 7.2 Preservative: 0.05% Sodium azide Constituents: PBS, 0.05% BSA
<b>Purity</b>	Protein A/G purified
<b>Purification notes</b>	Purified from Bioreactor Concentrate by Protein A/G.
<b>Clonality</b>	Monoclonal
<b>Clone number</b>	C3e/2478
<b>Isotype</b>	IgG1

Light chain type

kappa

## Applications

### The Abpromise guarantee

Our **Abpromise guarantee** covers the use of ab238084 in the following tested applications.

The application notes include recommended starting dilutions; optimal dilutions/concentrations should be determined by the end user.

Application	Abreviews	Notes
Protein Array		Use at an assay dependent concentration.
IHC-P		Use a concentration of 1 - 2 µg/ml. Perform heat mediated antigen retrieval with citrate buffer pH 6 before commencing with IHC staining protocol. Primary incubation for 30 minutes at room temperature.

## Target

### Function

The CD3 complex mediates signal transduction.

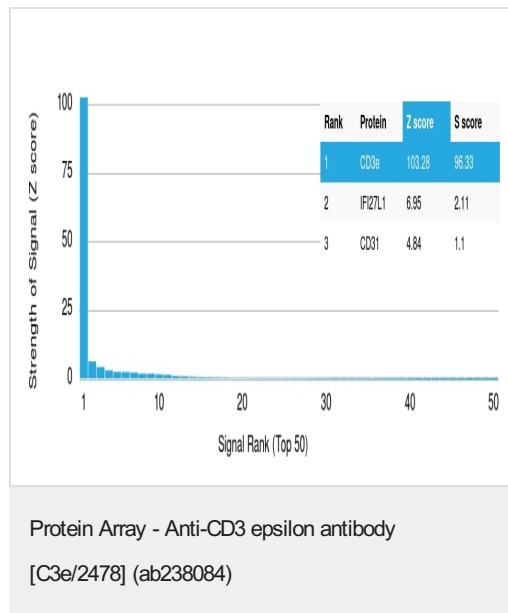
### Sequence similarities

Contains 1 Ig-like (immunoglobulin-like) domain.  
Contains 1 ITAM domain.

### Cellular localization

Membrane.

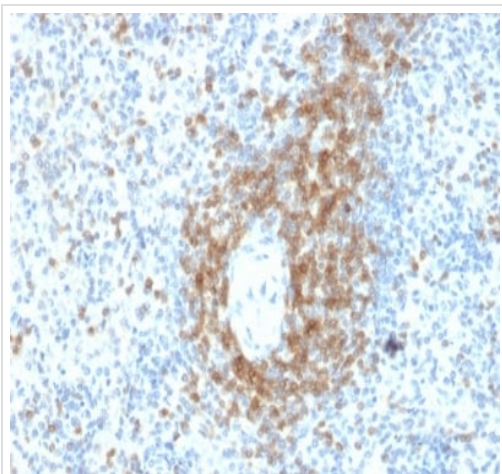
## Images



ab238084 was tested in protein array against over 19000 different full-length human proteins.

**Z- and S- Score:** The Z-score represents the strength of a signal that a monoclonal antibody (MAb) (in combination with a fluorescently-tagged anti-IgG secondary antibody) produces when binding to a particular protein on the HuProt™ array. Z-scores are described in units of standard deviations (SD's) above the mean value of all signals generated on that array. If targets on HuProt™ are arranged in descending order of the Z-score, the S-score is the difference (also in units of SD's) between the Z-score. S-score therefore represents the relative target specificity of a MAb to its intended target.

A MAb is specific to its intended target if the MAb has an S-score of at least 2.5. For example, if a MAb binds to protein X with a Z-score of 43 and to protein Y with a Z-score of 14, then the S-score for the binding of that MAb to protein X is equal to 29.



Formalin-fixed, paraffin-embedded human spleen tissue stained for CD3 epsilon using ab238084 at 2 µg/ml in immunohistochemical analysis.

Immunohistochemistry (Formalin/PFA-fixed paraffin-embedded sections) - Anti-CD3 epsilon antibody [C3e/2478] (ab238084)

**Please note:** All products are "FOR RESEARCH USE ONLY. NOT FOR USE IN DIAGNOSTIC PROCEDURES"

#### Our Abpromise to you: Quality guaranteed and expert technical support

---

- Replacement or refund for products not performing as stated on the datasheet
- Valid for 12 months from date of delivery
- Response to your inquiry within 24 hours
- We provide support in Chinese, English, French, German, Japanese and Spanish
- Extensive multi-media technical resources to help you
- We investigate all quality concerns to ensure our products perform to the highest standards

If the product does not perform as described on this datasheet, we will offer a refund or replacement. For full details of the Abpromise, please visit <https://www.abcam.com/abpromise> or contact our technical team.

#### Terms and conditions

---

- Guarantee only valid for products bought direct from Abcam or one of our authorized distributors