



Product datasheet

Anti-CD3 epsilon antibody [CA17.2A12] ab194842

1 Image

Overview

Product name	Anti-CD3 epsilon antibody [CA17.2A12]
Description	Mouse monoclonal [CA17.2A12] to CD3 epsilon
Host species	Mouse
Tested applications	Suitable for: Flow Cyt
Species reactivity	Reacts with: Dog
Immunogen	Full length native protein (purified) corresponding to Dog CD3 epsilon aa 1 to the C-terminus. Affinity enriched CD3 epsilon isolated from thymocytes and the T cell line CLGL-90. Database link: P27597
	 Run BLAST with  Run BLAST with
Positive control	Dog peripheral blood lymphocytes
General notes	<p>ab194842 is a valuable flow cytometric and immunohistologic tool for Dog lymphoma detection of T-cell origin.</p> <p>The Life Science industry has been in the grips of a reproducibility crisis for a number of years. Abcam is leading the way in addressing this with our range of recombinant monoclonal antibodies and knockout edited cell lines for gold-standard validation. Please check that this product meets your needs before purchasing.</p> <p>If you have any questions, special requirements or concerns, please send us an inquiry and/or contact our Support team ahead of purchase. Recommended alternatives for this product can be found below, along with publications, customer reviews and Q&As</p>

Properties

Form	Liquid
Storage instructions	Shipped at 4°C. Store at +4°C short term (1-2 weeks). Upon delivery aliquot. Store at -20°C long term. Avoid freeze / thaw cycle.
Storage buffer	Preservative: 0.09% Sodium azide Constituent: 99% PBS
Purity	Protein G purified
Purification notes	Purified IgG prepared by affinity chromatography on Protein G.
Clonality	Monoclonal
Clone number	CA17.2A12

Isotype

IgG1

Applications

The Abpromise guarantee

Our **Abpromise guarantee** covers the use of ab194842 in the following tested applications.

The application notes include recommended starting dilutions; optimal dilutions/concentrations should be determined by the end user.

Application	Abreviews	Notes
Flow Cyt		1/25 - 1/50. 10 µl of the suggested working dilution to label 10 ⁶ cells or 100 µl whole blood. ab170190 - Mouse monoclonal IgG1, is suitable for use as an isotype control with this antibody.

Target

Function

The CD3 complex mediates signal transduction.

Sequence similarities

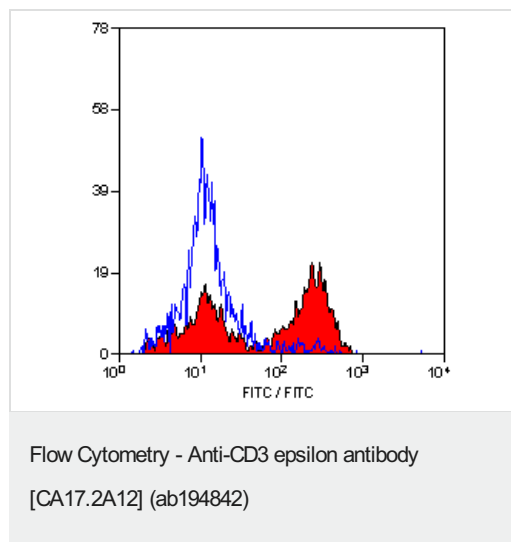
Contains 1 Ig-like (immunoglobulin-like) domain.

Contains 1 ITAM domain.

Cellular localization

Membrane.

Images



Flow cytometric analysis of Dog peripheral blood

lymphocytes labeling CD3 epsilon with ab194842 at 1/25 dilution.

Please note: All products are "FOR RESEARCH USE ONLY. NOT FOR USE IN DIAGNOSTIC PROCEDURES"

Our Abpromise to you: Quality guaranteed and expert technical support

- Replacement or refund for products not performing as stated on the datasheet
- Valid for 12 months from date of delivery

- Response to your inquiry within 24 hours
- We provide support in Chinese, English, French, German, Japanese and Spanish
- Extensive multi-media technical resources to help you
- We investigate all quality concerns to ensure our products perform to the highest standards

If the product does not perform as described on this datasheet, we will offer a refund or replacement. For full details of the Abpromise, please visit <https://www.abcam.com/abpromise> or contact our technical team.

Terms and conditions

- Guarantee only valid for products bought direct from Abcam or one of our authorized distributors