

Product datasheet

Anti-CD300a antibody [EPR5226] α b124810

Recombinant RabMAb

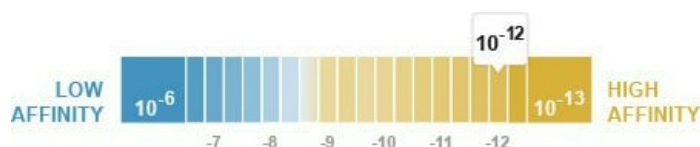
3 Images

Overview

Product name	Anti-CD300a antibody [EPR5226]
Description	Rabbit monoclonal [EPR5226] to CD300a
Host species	Rabbit
Tested applications	Suitable for: WB Unsuitable for: ICC/IF, IHC-P or IP
Species reactivity	Reacts with: Human
Immunogen	Synthetic peptide within Human CD300a aa 50-150. The exact sequence is proprietary.
Positive control	Human lymph node and spleen lysates.
General notes	<p>This product is a recombinant monoclonal antibody, which offers several advantages including:</p> <ul style="list-style-type: none"> - High batch-to-batch consistency and reproducibility - Improved sensitivity and specificity - Long-term security of supply - Animal-free production <p>For more information see here.</p> <p>Our RabMAb[®] technology is a patented hybridoma-based technology for making rabbit monoclonal antibodies. For details on our patents, please refer to RabMAb[®] patents.</p> <p>Mouse, Rat: We have preliminary internal testing data to indicate this antibody may not react with these species. Please contact us for more information.</p>

Properties

Form	Liquid
Storage instructions	Shipped at 4°C. Store at -20°C. Stable for 12 months at -20°C.
Dissociation constant (K_D)	$K_D = 3.90 \times 10^{-12}$ M



[Learn more about \$K_D\$](#)

Storage buffer	pH: 7.20 Preservative: 0.01% Sodium azide Constituents: 0.31% Sodium citrate, 0.175% Sodium chloride, 0.0172% EDTA, 59% PBS, 40% Glycerol (glycerin, glycerine), 0.05% BSA
Purity	Protein A purified
Clonality	Monoclonal
Clone number	EPR5226
Isotype	IgG

Applications

The Abpromise guarantee Our **Abpromise guarantee** covers the use of ab124810 in the following tested applications. The application notes include recommended starting dilutions; optimal dilutions/concentrations should be determined by the end user.

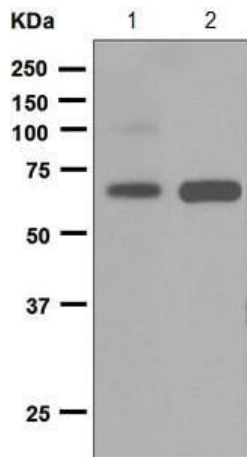
Application	Abreviews	Notes
WB		1/1000 - 1/10000. Detects a band of approximately 60 kDa (predicted molecular weight: 33 kDa).

Application notes Is unsuitable for ICC/IF, IHC-P or IP.

Target

Function	Inhibitory receptor which may contribute to the down-regulation of cytolytic activity in natural killer (NK) cells, and to the down-regulation of mast cell degranulation.
Tissue specificity	Expressed not only by natural killer (NK) cells but also by T-cell subsets, B-cells, dendritic cells, mast cells, granulocytes and monocytes.
Sequence similarities	Belongs to the CD300 family. Contains 1 Ig-like V-type (immunoglobulin-like) domain.
Post-translational modifications	Phosphorylated on tyrosine.
Cellular localization	Cell membrane.

Images



Western blot - Anti-CD300a antibody [EPR5226]
(ab124810)

All lanes : Anti-CD300a antibody [EPR5226] (ab124810) at 1/1000 dilution

Lane 1 : Human lymph node lysates

Lane 2 : Human spleen lysates

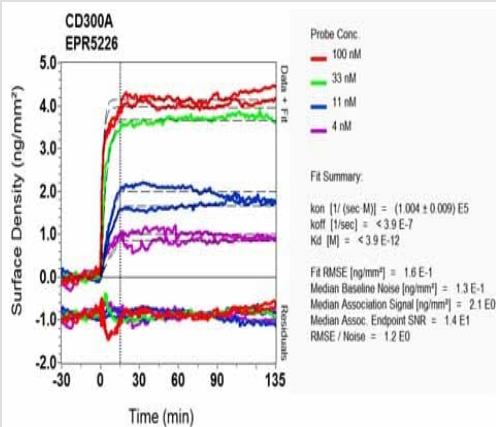
Lysates/proteins at 10 µg per lane.

Secondary

All lanes : Goat anti-Rabbit HRP at 1/2000 dilution

Predicted band size: 33 kDa

Observed band size: 60 kDa



SPR Scanning - Anti-CD300a antibody [EPR5226]
(ab124810)

Equilibrium dissociation constant (K_D)

Learn more about K_D

[Click here to learn more about \$K_D\$](#)

Why choose a recombinant antibody?



Research with confidence
Consistent and reproducible results



Long-term and scalable supply
Recombinant technology



Success from the first experiment
Confirmed specificity



Ethical standards compliant
Animal-free production

Anti-CD300a antibody [EPR5226] (ab124810)

Please note: All products are "FOR RESEARCH USE ONLY. NOT FOR USE IN DIAGNOSTIC PROCEDURES"

Our Abpromise to you: Quality guaranteed and expert technical support

- Replacement or refund for products not performing as stated on the datasheet
- Valid for 12 months from date of delivery
- Response to your inquiry within 24 hours
- We provide support in Chinese, English, French, German, Japanese and Spanish
- Extensive multi-media technical resources to help you
- We investigate all quality concerns to ensure our products perform to the highest standards

If the product does not perform as described on this datasheet, we will offer a refund or replacement. For full details of the Abpromise, please visit <https://www.abcam.com/abpromise> or contact our technical team.

Terms and conditions

- Guarantee only valid for products bought direct from Abcam or one of our authorized distributors