

Product datasheet

Anti-CD32 antibody [AT130-2] ab282740

Recombinant

[1 References](#) [6 Images](#)

Overview

Product name	Anti-CD32 antibody [AT130-2]
Description	Mouse monoclonal [AT130-2] to CD32
Host species	Mouse
Tested applications	Suitable for: IHC-Fr, ICC/IF, Flow Cyt Unsuitable for: WB
Species reactivity	Reacts with: Mouse
Immunogen	Fusion protein. This information is proprietary to Abcam and/or its suppliers.
Positive control	IHC-Fr: Mouse spleen tissue ICC: Mouse spleen cells Flow Cyt: Mouse splenocytes, J774A.1 cells
General notes	<p>This antibody clone is manufactured by Abcam. If you require a custom buffer formulation or conjugation for your experiments, please contact orders@abcam.com.</p> <p>This product is a recombinant monoclonal antibody, which offers several advantages including:</p> <ul style="list-style-type: none"> - High batch-to-batch consistency and reproducibility - Improved sensitivity and specificity - Long-term security of supply - Animal-free production <p>For more information see here.</p>

Properties

Form	Liquid
Storage instructions	Shipped at 4°C. Store at +4°C short term (1-2 weeks). Upon delivery aliquot. Store at -20°C. Avoid freeze / thaw cycle.
Storage buffer	pH: 7.2 Preservative: 0.01% Sodium azide Constituents: 59% PBS, 40% Glycerol (glycerin, glycerine), 0.05% BSA
Purity	Protein A purified
Clonality	Monoclonal
Clone number	AT130-2

Isotype

IgG2a

Applications

The Abpromise guarantee

Our **Abpromise guarantee** covers the use of ab282740 in the following tested applications.

The application notes include recommended starting dilutions; optimal dilutions/concentrations should be determined by the end user.

Application	Abreviews	Notes
IHC-Fr		1/100.
ICC/IF		1/50.
Flow Cyt		1/1000.

Application notes

Is unsuitable for WB.

Target

Function

Binds to the Fc region of immunoglobulins gamma. Low affinity receptor. By binding to IgG it initiates cellular responses against pathogens and soluble antigens.

Tissue specificity

Found on monocytes, neutrophils and eosinophil platelets.

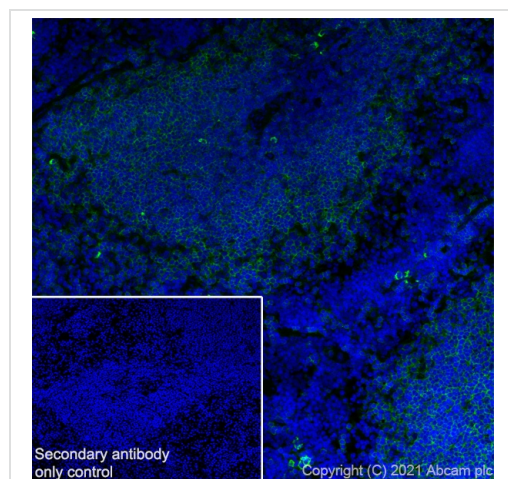
Sequence similarities

Contains 2 Ig-like C2-type (immunoglobulin-like) domains.

Cellular localization

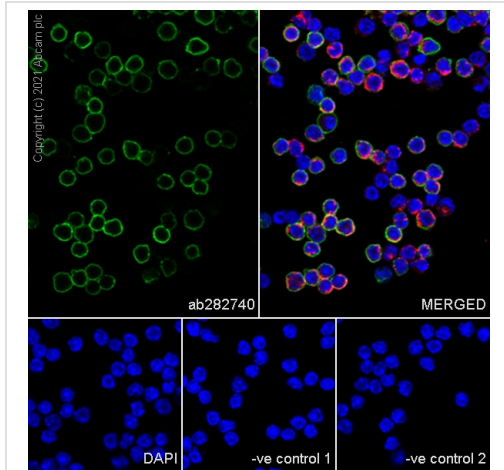
Cell membrane.

Images



Immunohistochemical analysis of 4% PFA fixed, 0.2% Triton X-100 permeabilised Mouse spleen (fresh) tissue labeling CD32 with ab282740 at 1/100 (5.0 µg/ml), followed by **ab150081** Goat Anti-Rabbit IgG H&L (Alexa Fluor® 488) preadsorbed secondary antibody. Positive staining on mouse spleen. Counterstained with DAPI.

Immunohistochemistry (Frozen sections) - Anti-CD32 antibody [AT130-2] (ab282740)

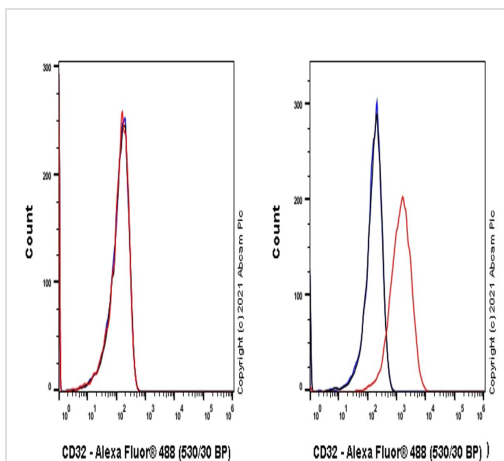


Immunocytochemistry/ Immunofluorescence - Anti-CD32 antibody [AT130-2] (ab282740)

Immunofluorescent analysis of 4% Paraformaldehyde-fixed, 0.1% TritonX-100 permeabilized mouse spleen cells labelling CD32 with ab282740 at 1/50 dilution (18.92 µg/ml) (Green). Confocal image showing cytoplasmic staining in mouse spleen cells. **ab150117** Goat Anti-Mouse IgG H&L (Alexa Fluor® 488) preadsorbed was used as a secondary at 1/1000 dilution (2 µg/ml). **ab179513** Anti-beta Tubulin rabbit monoclonal antibody was used to counterstain tubulin at 1/200 dilution, followed by **ab150080** Goat Anti-Rabbit IgG H&L (Alexa Fluor® 594) secondary counterstain at 1/500 dilution (Red). The Nuclear counterstain was DAPI (Blue).

Negative control 1: secondary counterstain antibody only control.

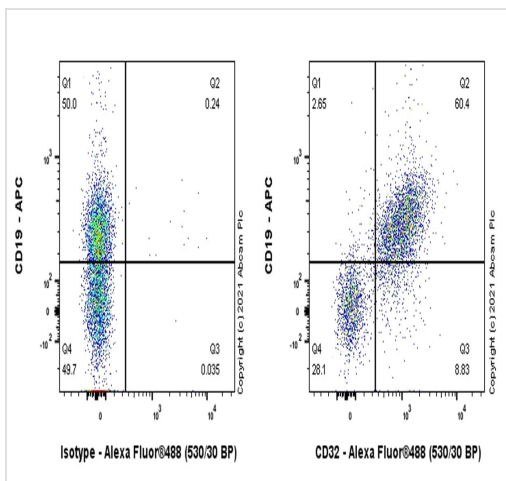
Negative control 2: primary counterstain and target secondary antibody control.



Flow Cytometry - Anti-CD32 antibody [AT130-2] (ab282740)

Flow cytometric analysis of bEnd.3 (mouse brain endothelioma, Left) / J774A.1 (mouse reticulum cell sarcoma monocyte macrophage, Right) labelling CD32 with ab282740 at 1/1000 dilution (0.1 µg), followed by Goat anti mouse IgG (Alexa Fluor® 488, **ab150113**) antibody at 1/2000 dilution (Red) compared with Mouse monoclonal IgG (Black) isotype control and an unlabelled control (cells without incubation with primary antibody and secondary antibody) (Blue). Gated on viable cells.

Negative control: bEnd.3.

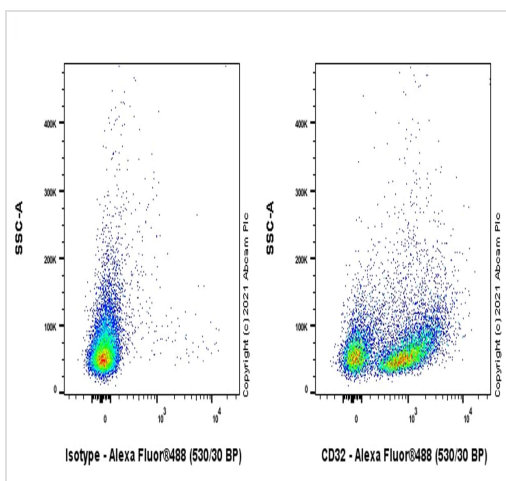


Flow Cytometry - Anti-CD32 antibody [AT130-2]
(ab282740)

Flow cytometric analysis of mouse splenocytes cells labelling CD32 with ab282740 at 1/1000 dilution (0.1 µg / Right) compared with a mouse monoclonal IgG (Left) isotype control. Goat anti mouse IgG (Alexa Fluor® 488, [ab150113](#)) was used as a secondary antibody at 1/2000 dilution.

Cells were stained with mouse IgG or ab282740. Then stained with a rabbit anti-mouse CD19 ([ab267394](#)) conjugated to APC. The conjugation was performed by using APC Conjugation Kit - Lightning-Link® ([ab201807](#)).

Gated on viable cells.



Flow Cytometry - Anti-CD32 antibody [AT130-2]
(ab282740)

Flow cytometric analysis of mouse splenocytes cells labelling CD32 with ab282740 at 1/1000 dilution (0.1 µg / Right) compared with a Mouse monoclonal IgG (Left) isotype control. Goat anti mouse IgG (Alexa Fluor® 488, [ab150113](#)) was used as a secondary antibody at 1/2000 dilution.

Gated on viable cells.

Why choose a recombinant antibody?



Research with confidence
Consistent and reproducible results



Long-term and scalable supply
Recombinant technology



Success from the first experiment
Confirmed specificity



Ethical standards compliant
Animal-free production

Anti-CD32 antibody [AT130-2] (ab282740)

Our Abpromise to you: Quality guaranteed and expert technical support

- Replacement or refund for products not performing as stated on the datasheet
- Valid for 12 months from date of delivery
- Response to your inquiry within 24 hours

- We provide support in Chinese, English, French, German, Japanese and Spanish
- Extensive multi-media technical resources to help you
- We investigate all quality concerns to ensure our products perform to the highest standards

If the product does not perform as described on this datasheet, we will offer a refund or replacement. For full details of the Abpromise, please visit <https://www.abcam.com/abpromise> or contact our technical team.

Terms and conditions

- Guarantee only valid for products bought direct from Abcam or one of our authorized distributors