

Product datasheet

Anti-CD32A + CD32C antibody [EPR6658] α b125013

Recombinant RabMAb

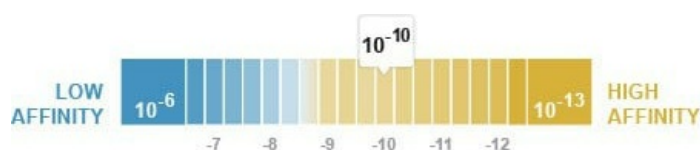
[2 References](#) [5 Images](#)

Overview

Product name	Anti-CD32A + CD32C antibody [EPR6658]
Description	Rabbit monoclonal [EPR6658] to CD32A + CD32C
Host species	Rabbit
Tested applications	Suitable for: WB, IHC-P Unsuitable for: Flow Cyt, ICC/IF or IP
Species reactivity	Reacts with: Human Does not react with: Mouse, Rat
Immunogen	Synthetic peptide within Human CD32A aa 250-350. The exact sequence is proprietary.
Positive control	K562 and Human platelet lysates; Human lung and spleen tissues.
General notes	This product is a recombinant monoclonal antibody, which offers several advantages including: <ul style="list-style-type: none"> - High batch-to-batch consistency and reproducibility - Improved sensitivity and specificity - Long-term security of supply - Animal-free production For more information see here . Our RabMAb [®] technology is a patented hybridoma-based technology for making rabbit monoclonal antibodies. For details on our patents, please refer to RabMAb[®] patents .

Properties

Form	Liquid
Storage instructions	Shipped at 4°C. Store at -20°C. Stable for 12 months at -20°C.
Dissociation constant (K_D)	$K_D = 8.90 \times 10^{-10}$ M



[Learn more about \$K_D\$](#)

Storage buffer	pH: 7.20 Preservative: 0.01% Sodium azide
----------------	--

	Constituents: 9% PBS, 40% Glycerol (glycerin, glycerine), 0.05% BSA, 50% Tissue culture supernatant
Purity	Protein A purified
Clonality	Monoclonal
Clone number	EPR6658
Isotype	IgG

Applications

The Abpromise guarantee Our **Abpromise guarantee** covers the use of ab125013 in the following tested applications. The application notes include recommended starting dilutions; optimal dilutions/concentrations should be determined by the end user.

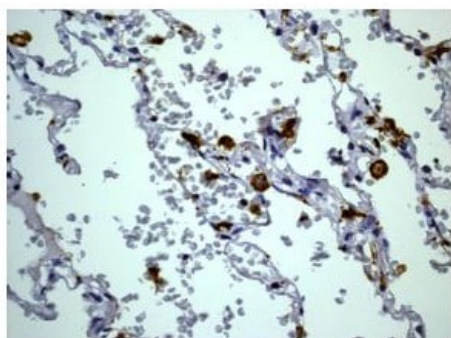
Application	Abreviews	Notes
WB		1/1000 - 1/10000. Detects a band of approximately 37-43 kDa (predicted molecular weight: 35 kDa).
IHC-P		1/250 - 1/500. Perform heat mediated antigen retrieval before commencing with IHC staining protocol.

Application notes Is unsuitable for Flow Cyt, ICC/IF or IP.

Target

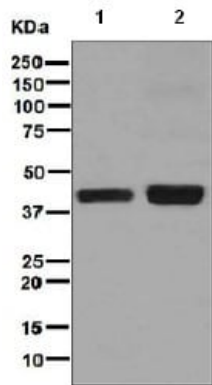
Cellular localization CD32A: Cell membrane. CD32C: Cytoplasm and Cell membrane.

Images



ab125013 at 1/250 staining CD32A + CD32C in paraffin-embedded Human lung tissue by immunohistochemistry. Heat mediated antigen retrieval was performed before commencing with IHC staining protocol.

Immunohistochemistry (Formalin/PFA-fixed paraffin-embedded sections) - Anti-CD32A + CD32C antibody [EPR6658] (ab125013)



Western blot - Anti-CD32A + CD32C antibody
[EPR6658] (ab125013)

All lanes : Anti-CD32A + CD32C antibody [EPR6658] (ab125013)
at 1/1000 dilution

Lane 1 : K562 lysate

Lane 2 : Human platelet lysate

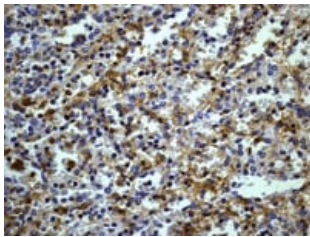
Lysates/proteins at 10 µg per lane.

Secondary

All lanes : HRP labelled goat anti-rabbit at 1/2000 dilution

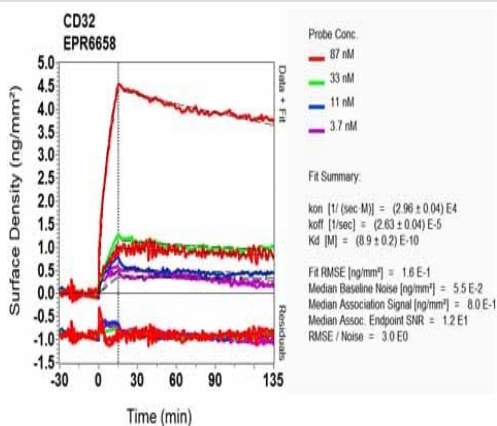
Predicted band size: 35 kDa

Observed band size: 37-43 kDa



Immunohistochemistry (Formalin/PFA-fixed paraffin-
embedded sections) - Anti-CD32A + CD32C
antibody [EPR6658] (ab125013)

ab125013 at 1/250 staining CD32A + CD32C in paraffin-
embedded Human spleen tissue by immunohistochemistry. Heat
mediated antigen retrieval was performed before commencing with
IHC staining protocol.



OL-RD Scanning - Anti-CD32A + CD32C antibody
[EPR6658] (ab125013)

Equilibrium disassociation constant (K_D)

Learn more about K_D

[Click here to learn more about \$K_D\$](#)

Why choose a recombinant antibody?



Research with confidence
Consistent and reproducible results



Long-term and scalable supply
Recombinant technology



Success from the first experiment
Confirmed specificity



Ethical standards compliant
Animal-free production

Anti-CD32A + CD32C antibody [EPR6658]

(ab125013)

Please note: All products are "FOR RESEARCH USE ONLY. NOT FOR USE IN DIAGNOSTIC PROCEDURES"

Our Abpromise to you: Quality guaranteed and expert technical support

- Replacement or refund for products not performing as stated on the datasheet
- Valid for 12 months from date of delivery
- Response to your inquiry within 24 hours
- We provide support in Chinese, English, French, German, Japanese and Spanish
- Extensive multi-media technical resources to help you
- We investigate all quality concerns to ensure our products perform to the highest standards

If the product does not perform as described on this datasheet, we will offer a refund or replacement. For full details of the Abpromise, please visit <https://www.abcam.com/abpromise> or contact our technical team.

Terms and conditions

- Guarantee only valid for products bought direct from Abcam or one of our authorized distributors