

Product datasheet

Anti-CD32B (phospho Y292) antibody [EP926Y] ab68423

Recombinant RabMAb

[3 References](#) [3 Images](#)

Overview

Product name	Anti-CD32B (phospho Y292) antibody [EP926Y]
Description	Rabbit monoclonal [EP926Y] to CD32B (phospho Y292)
Host species	Rabbit
Tested applications	Suitable for: WB, IP Unsuitable for: Flow Cyt, ICC/IF or IHC-P
Species reactivity	Reacts with: Human
Immunogen	Synthetic peptide. This information is proprietary to Abcam and/or its suppliers.
Positive control	IP: Raji whole cell lysate WB: Daudi (Human Burkitt's lymphoma lymphoblast) treated with 10mM pervanadate for 30 minutes whole cell lysate
General notes	Our RabMAb [®] technology is a patented hybridoma-based technology for making rabbit monoclonal antibodies. For details on our patents, please refer to RabMAb[®] patents . Mouse, Rat: We have preliminary internal testing data to indicate this antibody may not react with these species. Please contact us for more information.

Properties

Form	Liquid
Storage instructions	Shipped at 4°C. Store at -20°C. Stable for 12 months at -20°C.
Storage buffer	pH: 7.20 Preservative: 0.05% Sodium azide Constituents: 0.1% BSA, 40% Glycerol (glycerin, glycerine), 9.85% Tris glycine, 50% Tissue culture supernatant
Purity	Protein A purified
Clonality	Monoclonal
Clone number	EP926Y
Isotype	IgG

Applications

The Abpromise guarantee

Our **Abpromise guarantee** covers the use of ab68423 in the following tested applications.

The application notes include recommended starting dilutions; optimal dilutions/concentrations should be determined by the end user.

Application	Abreviews	Notes
WB		1/50000 - 1/100000. Detects a band of approximately 40,44 kDa (predicted molecular weight: 40,44 kDa).
IP		1/20.

Application notes

Is unsuitable for Flow Cyt, ICC/IF or IHC-P.

Target

Function

Receptor for the Fc region of complexed or aggregated immunoglobulins gamma. Low affinity receptor. Involved in a variety of effector and regulatory functions such as phagocytosis of immune complexes and modulation of antibody production by B-cells. Binding to this receptor results in down-modulation of previous state of cell activation triggered via antigen receptors on B-cells (BCR), T-cells (TCR) or via another Fc receptor. Isoform IIB1 fails to mediate endocytosis or phagocytosis. Isoform IIB2 does not trigger phagocytosis.

Tissue specificity

Is the most broadly distributed Fc-gamma-receptor. Expressed in monocyte, neutrophils, macrophages, basophils, eosinophils, Langerhans cells, B-cells, platelets cells and placenta (endothelial cells). Not detected in natural killer cells.

Involvement in disease

Note=A chromosomal aberration involving FCGR2B is found in a follicular lymphoma. Translocation t(1;22)(q22;q11). The translocation leads to the hyperexpression of the receptor. This may play a role in the tumor progression.

Sequence similarities

Contains 2 Ig-like C2-type (immunoglobulin-like) domains.

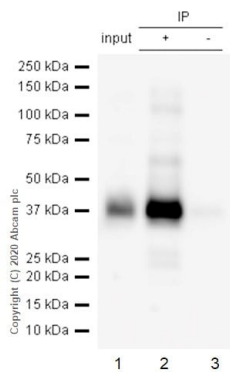
Domain

Contains 1 copy of a cytoplasmic motif that is referred to as the immunoreceptor tyrosine-based inhibitor motif (ITIM). This motif is involved in modulation of cellular responses. The phosphorylated ITIM motif can bind the SH2 domain of several SH2-containing phosphatases.

Cellular localization

Cell membrane.

Images



Immunoprecipitation - Anti-CD32B (phospho Y292) antibody [EP926Y] (ab68423)

ab68423 at 1/20 dilution immunoprecipitating CD32B in Raji (Human Burkitt's lymphoma) whole cell lysates.

Lane 1 (input): Raji (Human Burkitt's lymphoma) treated with 10mM pervanadate for 30 minutes whole cell lysate 10µg

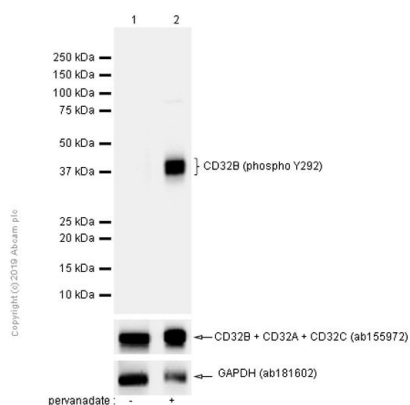
Lane 2 (+): Raji treated with 10mM pervanadate for 30 minutes whole cell lysate

Lane 3 (-): Rabbit monoclonal IgG (**ab172730**) instead of ab68423 in Raji treated with 10mM pervanadate for 30 minutes whole cell lysate

For western blotting, ab68423 at 1/20 dilution and VeriBlot for IP Detection Reagent (HRP)(**ab131366**) at 1/1000 dilution were used.

Exposure time: 1 second

Observed MW: 40-44 KDa



Western blot - Anti-CD32B (phospho Y292) antibody [EP926Y] (ab68423)

All lanes : Anti-CD32B (phospho Y292) antibody [EP926Y] (ab68423) at 1/100000 dilution

Lane 1 : Daudi (Human Burkitt's lymphoma lymphoblast) whole cell lysate

Lane 2 : Daudi (Human Burkitt's lymphoma lymphoblast) treated with 10mM pervanadate for 30 minutes whole cell lysate

Lysates/proteins at 15 µg per lane.

Secondary

All lanes : Goat Anti-Rabbit IgG H&L (HRP) (**ab97051**) at 1/20000 dilution

Predicted band size: 40,44 kDa

Exposure time: 5 seconds

Observed MW: 40-44 KDa

Blocking/diluting buffer and concentration: 5% NFD/MTBST

Why choose a recombinant antibody?



Research with confidence
Consistent and reproducible results



Long-term and scalable supply
Recombinant technology



Success from the first experiment
Confirmed specificity



Ethical standards compliant
Animal-free production

Anti-CD32B (phospho Y292) antibody [EP926Y]
(ab68423)

Please note: All products are "FOR RESEARCH USE ONLY. NOT FOR USE IN DIAGNOSTIC PROCEDURES"

Our Abpromise to you: Quality guaranteed and expert technical support

- Replacement or refund for products not performing as stated on the datasheet
- Valid for 12 months from date of delivery
- Response to your inquiry within 24 hours
- We provide support in Chinese, English, French, German, Japanese and Spanish
- Extensive multi-media technical resources to help you
- We investigate all quality concerns to ensure our products perform to the highest standards

If the product does not perform as described on this datasheet, we will offer a refund or replacement. For full details of the Abpromise, please visit <https://www.abcam.com/abpromise> or contact our technical team.

Terms and conditions

- Guarantee only valid for products bought direct from Abcam or one of our authorized distributors