


## Product datasheet

### Anti-CD35 antibody [8C12] ab245683

[1 Image](#)

#### Overview

---

<b>Product name</b>	Anti-CD35 antibody [8C12]
<b>Description</b>	Rabbit monoclonal [8C12] to CD35
<b>Host species</b>	Rabbit
<b>Specificity</b>	This antibody recognizes an epitope on CD35 (CR1, 190 kDa), but not on CD21 (CR2, 145-150 kDa), which are alternative splice variants of primary Cr2 gene transcripts.
<b>Tested applications</b>	<b>Suitable for:</b> IHC-P
<b>Species reactivity</b>	<b>Reacts with:</b> Rat <b>Predicted to work with:</b> Mouse 
<b>Immunogen</b>	Full length native protein (purified) corresponding to CD35. Purified murine CR1 protein Database link: <a href="#">P17927</a>
<b>Positive control</b>	IHC-P: Rat stomach tissue.
<b>General notes</b>	<p>The Life Science industry has been in the grips of a reproducibility crisis for a number of years. Abcam is leading the way in addressing this with our range of recombinant monoclonal antibodies and knockout edited cell lines for gold-standard validation. Please check that this product meets your needs before purchasing.</p> <p>If you have any questions, special requirements or concerns, please send us an inquiry and/or contact our Support team ahead of purchase. Recommended alternatives for this product can be found below, along with publications, customer reviews and Q&amp;As</p>

#### Properties

---

<b>Form</b>	Liquid
<b>Storage instructions</b>	Shipped at 4°C. Store at +4°C short term (1-2 weeks). Upon delivery aliquot. Store at -20°C long term. Avoid freeze / thaw cycle.
<b>Storage buffer</b>	Preservative: 0.02% Proclin 300 Constituent: 99% PBS
<b>Purity</b>	Protein A purified
<b>Clonality</b>	Monoclonal
<b>Clone number</b>	8C12
<b>Isotype</b>	IgG

Light chain type

kappa

## Applications

### The Abpromise guarantee

Our **Abpromise guarantee** covers the use of ab245683 in the following tested applications.

The application notes include recommended starting dilutions; optimal dilutions/concentrations should be determined by the end user.

Application	Abreviews	Notes
IHC-P		Use a concentration of 3 µg/ml.

## Target

### Function

Mediates cellular binding of particles and immune complexes that have activated complement.

### Tissue specificity

Present on erythrocytes, leukocytes, glomerular podocytes, and splenic follicular dendritic cells.

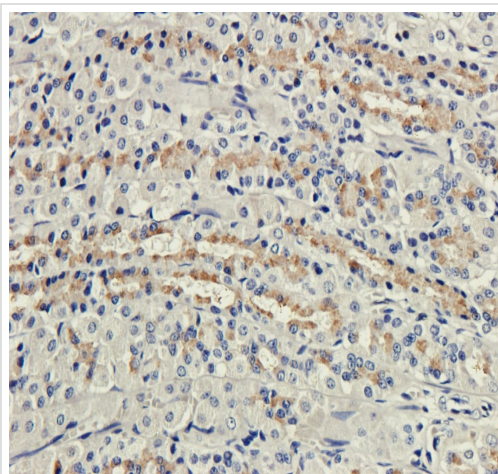
### Sequence similarities

Belongs to the receptors of complement activation (RCA) family.  
Contains 30 Sushi (CCP/SCR) domains.

### Cellular localization

Membrane.

## Images



Immunohistochemical analysis of formalin-fixed rat stomach tissue stained for CD35 with ab245683 at 3 µg/ml.

Immunohistochemistry (Formalin/PFA-fixed paraffin-embedded sections) - Anti-CD35 antibody [8C12] (ab245683)

**Please note:** All products are "FOR RESEARCH USE ONLY. NOT FOR USE IN DIAGNOSTIC PROCEDURES"

## Our Abpromise to you: Quality guaranteed and expert technical support

- Replacement or refund for products not performing as stated on the datasheet

- Valid for 12 months from date of delivery
- Response to your inquiry within 24 hours
  
- We provide support in Chinese, English, French, German, Japanese and Spanish
- Extensive multi-media technical resources to help you
- We investigate all quality concerns to ensure our products perform to the highest standards

If the product does not perform as described on this datasheet, we will offer a refund or replacement. For full details of the Abpromise, please visit <https://www.abcam.com/abpromise> or contact our technical team.

### **Terms and conditions**

---

- Guarantee only valid for products bought direct from Abcam or one of our authorized distributors