

Product datasheet

Anti-CD35 antibody [EPR6601] ab133293

Recombinant **RabMAb**

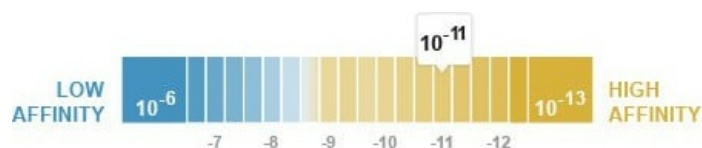
[2 References](#) [7 Images](#)

Overview

Product name	Anti-CD35 antibody [EPR6601]
Description	Rabbit monoclonal [EPR6601] to CD35
Host species	Rabbit
Tested applications	Suitable for: WB, IHC-P Unsuitable for: Flow Cyt, ICC/IF or IP
Species reactivity	Reacts with: Human
Immunogen	Synthetic peptide. This information is proprietary to Abcam and/or its suppliers.
Positive control	WB: TF-1, and Human tonsil lysates. IHC-P: human tonsil, kidney tissue.
General notes	<p>This product is a recombinant monoclonal antibody, which offers several advantages including:</p> <ul style="list-style-type: none"> - High batch-to-batch consistency and reproducibility - Improved sensitivity and specificity - Long-term security of supply - Animal-free production <p>For more information see here.</p> <p>Our RabMAb[®] technology is a patented hybridoma-based technology for making rabbit monoclonal antibodies. For details on our patents, please refer to RabMAb[®] patents.</p> <p>Mouse, Rat: We have preliminary internal testing data to indicate this antibody may not react with these species. Please contact us for more information.</p>

Properties

Form	Liquid
Storage instructions	Shipped at 4°C. Store at -20°C.
Dissociation constant (K_D)	K _D = 5.70 x 10 ⁻¹¹ M



[Learn more about K_D](#)

Storage buffer	pH: 7.20 Preservative: 0.01% Sodium azide Constituents: 59% PBS, 40% Glycerol (glycerin, glycerine), 0.05% BSA
Purity	Protein A purified
Clonality	Monoclonal
Clone number	EPR6601
Isotype	IgG

Applications

The Abpromise guarantee Our **Abpromise guarantee** covers the use of ab133293 in the following tested applications. The application notes include recommended starting dilutions; optimal dilutions/concentrations should be determined by the end user.

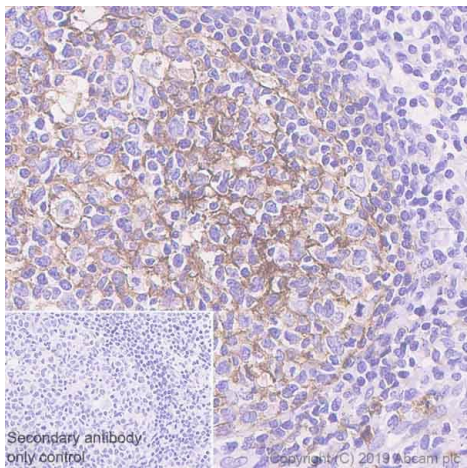
Application	Abreviews	Notes
WB		1/1000 - 1/10000. Detects a band of approximately 280 kDa (predicted molecular weight: 223 kDa).
IHC-P		1/100 - 1/250. Perform heat mediated antigen retrieval with citrate buffer pH 6 before commencing with IHC staining protocol. See <u>IHC antigen retrieval protocols</u>

Application notes Is unsuitable for Flow Cyt, ICC/IF or IP.

Target

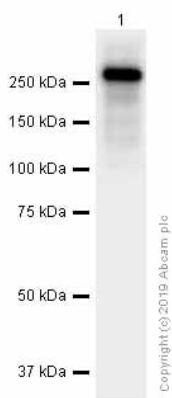
Function	Mediates cellular binding of particles and immune complexes that have activated complement.
Tissue specificity	Present on erythrocytes, leukocytes, glomerular podocytes, and splenic follicular dendritic cells.
Sequence similarities	Belongs to the receptors of complement activation (RCA) family. Contains 30 Sushi (CCP/SCR) domains.
Cellular localization	Membrane.

Images



Immunohistochemistry (Formalin/PFA-fixed paraffin-embedded sections) - Anti-CD35 antibody [EPR6601] (ab133293)

Immunohistochemistry (Formalin/PFA-fixed paraffin-embedded sections) analysis of human tonsil tissue sections labeling CD35 with purified ab133293 at 1:250 dilution (1.76 µg/ml). Heat mediated antigen retrieval was performed using Bond™ Epitope Retrieval Solution 2 (pH 9.0). Rabbit specific IHC polymer detection kit HRP/DAB (**ab209101**) was used as the secondary antibody. Negative control: PBS instead of the primary antibody. Hematoxylin was used as a counterstain.



Western blot - Anti-CD35 antibody [EPR6601] (ab133293)

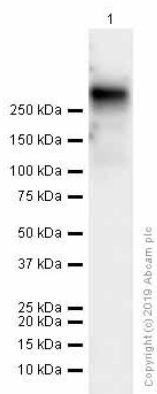
Anti-CD35 antibody [EPR6601] (ab133293) at 1/10000 dilution (Purified) + Human tonsil lysates at 15 µg

Secondary

Goat Anti-Rabbit IgG (HRP) with minimal cross-reactivity with human IgG at 1/2000 dilution

Predicted band size: 223 kDa

Observed band size: 280 kDa



Western blot - Anti-CD35 antibody [EPR6601] (ab133293)

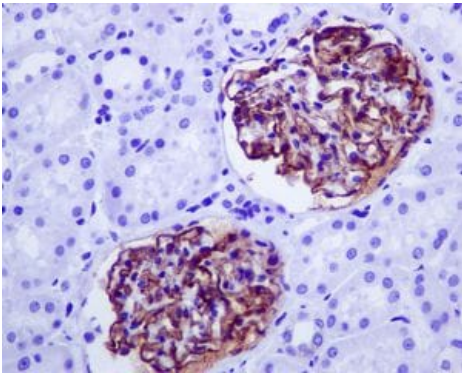
Anti-CD35 antibody [EPR6601] (ab133293) at 1/1000 dilution (Purified) + TF-1 (Human Erythroleukemia erythroblast) whole cell lysates at 15 µg

Secondary

Goat Anti-Rabbit IgG (HRP) with minimal cross-reactivity with human IgG at 1/2000 dilution

Predicted band size: 223 kDa

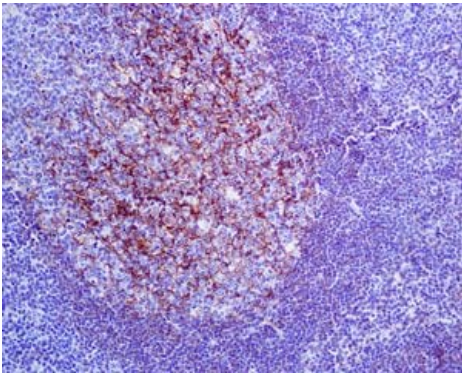
Observed band size: 280 kDa



Immunohistochemistry (Formalin/PFA-fixed paraffin-embedded sections) - Anti-CD35 antibody [EPR6601] (ab133293)

Immunohistochemical analysis of paraffin-embedded Human kidney tissue labelling CD35 with unpurified ab133293 at 1/100 dilution.

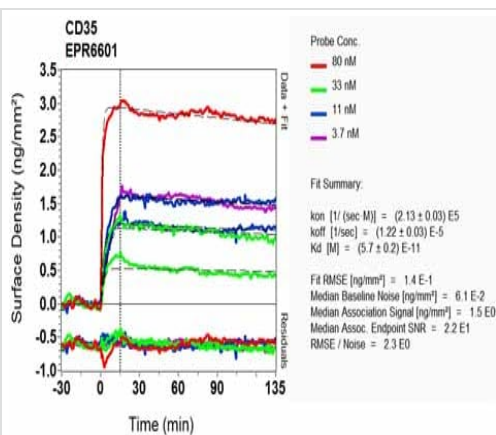
Perform heat mediated antigen retrieval with citrate buffer pH 6 before commencing with IHC staining protocol.



Immunohistochemistry (Formalin/PFA-fixed paraffin-embedded sections) - Anti-CD35 antibody [EPR6601] (ab133293)

Immunohistochemical analysis of paraffin-embedded Human tonsil tissue labelling CD35 with 1/100 unpurified ab133293.

Perform heat mediated antigen retrieval with citrate buffer pH 6 before commencing with IHC staining protocol.



Ox-RD Scanning - Anti-CD35 antibody [EPR6601] (ab133293)

Equilibrium dissociation constant (K_D)

Learn more about K_D

[Click here to learn more about \$K_D\$](#)

Why choose a recombinant antibody?



Research with confidence
Consistent and reproducible results



Long-term and scalable supply
Recombinant technology



Success from the first experiment
Confirmed specificity



Ethical standards compliant
Animal-free production

Anti-CD35 antibody [EPR6601] (ab133293)

Please note: All products are "FOR RESEARCH USE ONLY. NOT FOR USE IN DIAGNOSTIC PROCEDURES"

Our Abpromise to you: Quality guaranteed and expert technical support

- Replacement or refund for products not performing as stated on the datasheet
- Valid for 12 months from date of delivery
- Response to your inquiry within 24 hours
- We provide support in Chinese, English, French, German, Japanese and Spanish
- Extensive multi-media technical resources to help you
- We investigate all quality concerns to ensure our products perform to the highest standards

If the product does not perform as described on this datasheet, we will offer a refund or replacement. For full details of the Abpromise, please visit <https://www.abcam.com/abpromise> or contact our technical team.

Terms and conditions

- Guarantee only valid for products bought direct from Abcam or one of our authorized distributors