

## Product datasheet

### Anti-CD35 antibody [SP191] ab227666

Recombinant **RabMAb**

[6 Images](#)

#### Overview

<b>Product name</b>	Anti-CD35 antibody [SP191]
<b>Description</b>	Rabbit monoclonal [SP191] to CD35
<b>Host species</b>	Rabbit
<b>Tested applications</b>	<b>Suitable for:</b> IHC-P
<b>Species reactivity</b>	<b>Reacts with:</b> Human
<b>Immunogen</b>	Synthetic peptide. This information is proprietary to Abcam and/or its suppliers.
<b>Positive control</b>	IHC-P: Human tonsil, kidney, colon and stomach adenocarcinoma tissue.
<b>General notes</b>	<b>This product is FOR RESEARCH USE ONLY. For commercial use, please contact <a href="mailto:partnerships@abcam.com">partnerships@abcam.com</a>.</b>

#### Properties

<b>Form</b>	Liquid
<b>Storage instructions</b>	Shipped at 4°C. Store at +4°C short term (1-2 weeks). Upon delivery aliquot. Store at -20°C long term. Avoid freeze / thaw cycle.
<b>Storage buffer</b>	pH: 7.60 Preservative: 0.1% Sodium azide Constituents: PBS, 1% BSA
<b>Purity</b>	Protein A/G purified
<b>Purification notes</b>	Purified from TCS by protein A/G.
<b>Clonality</b>	Monoclonal
<b>Clone number</b>	SP191
<b>Isotype</b>	IgG

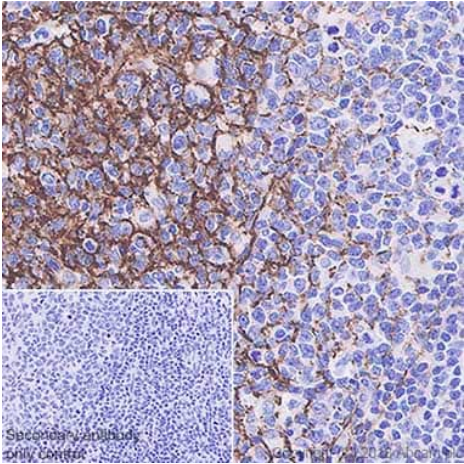
#### Applications

**The Abpromise guarantee** Our **Abpromise guarantee** covers the use of ab227666 in the following tested applications. The application notes include recommended starting dilutions; optimal dilutions/concentrations should be determined by the end user.

Application	Abreviews	Notes
IHC-P		<p>1/100.</p> <p>Antigen Retrieval: Boil tissue section in EDTA buffer, pH 8.0 for 10 minutes followed by cooling at room temperature for 20 minutes.</p> <p>Incubate with primary antibody for 30 minutes at room temperature.</p>

<b>Target</b>	
<b>Function</b>	Mediates cellular binding of particles and immune complexes that have activated complement.
<b>Tissue specificity</b>	Present on erythrocytes, leukocytes, glomerular podocytes, and splenic follicular dendritic cells.
<b>Sequence similarities</b>	<p>Belongs to the receptors of complement activation (RCA) family.</p> <p>Contains 30 Sushi (CCP/SCR) domains.</p>
<b>Cellular localization</b>	Membrane.

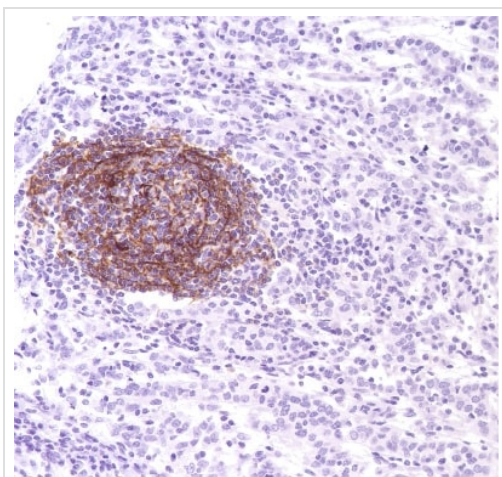
**Images**



Immunohistochemistry (Formalin/PFA-fixed paraffin-embedded sections) - Anti-CD35 antibody [SP191] (ab227666)

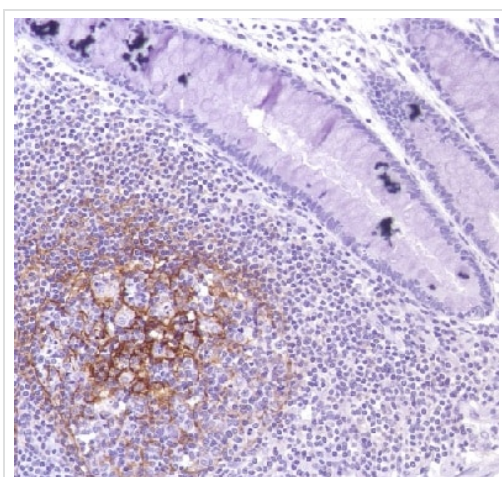
Immunohistochemistry (Formalin/PFA-fixed paraffin-embedded sections) analysis of Human tonsil tissue sections labeling CD35 with ab227666 at 1100 dilution (2.69 µg/ml). Heat mediated antigen retrieval with Tris-EDTA buffer (pH 9.0, epitope retrieval solution 2) for 10mins. Rabbit specific IHC polymer detection kit HRP/DAB (**ab209101**) was used as the secondary antibody. Hematoxylin was used as a counterstain. Membranous staining on germinal center of human tonsil, performed on a Leica Biosystems BOND™ RX instrument.

The section was incubated with ab227666 for 30 mins at room temperature.



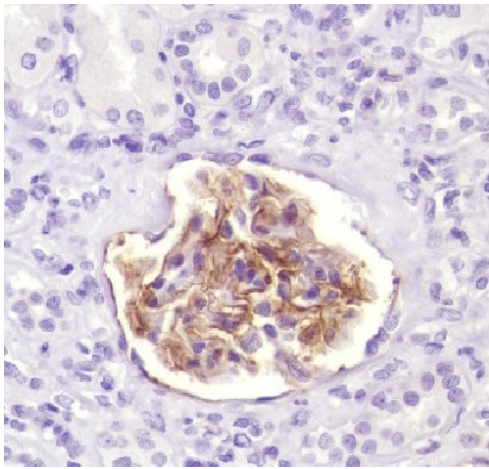
Immunohistochemistry (Formalin/PFA-fixed paraffin-embedded sections) - Anti-CD35 antibody [SP191] (ab227666)

Formalin-fixed, paraffin-embedded human stomach adenocarcinoma tissue stained for CD35 using ab227666 at 1/100 dilution in immunohistochemical analysis.



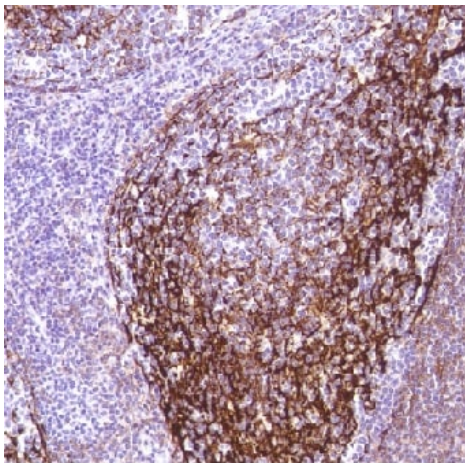
Immunohistochemistry (Formalin/PFA-fixed paraffin-embedded sections) - Anti-CD35 antibody [SP191] (ab227666)

Formalin-fixed, paraffin-embedded human colon tissue stained for CD35 using ab227666 at 1/100 dilution in immunohistochemical analysis.



Immunohistochemistry (Formalin/PFA-fixed paraffin-embedded sections) - Anti-CD35 antibody [SP191] (ab227666)





Formalin-fixed, paraffin-embedded human kidney tissue stained for CD35 using ab227666 at 1/100 dilution in immunohistochemical analysis.



Immunohistochemistry (Formalin/PFA-fixed paraffin-embedded sections) - Anti-CD35 antibody [SP191] (ab227666)

Formalin-fixed, paraffin-embedded human tonsil tissue stained for CD35 using ab227666 at 1/100 dilution in immunohistochemical analysis.

Why choose a recombinant antibody?

 <p><b>Research with confidence</b> Consistent and reproducible results</p>	 <p><b>Long-term and scalable supply</b> Recombinant technology</p>
 <p><b>Success from the first experiment</b> Confirmed specificity</p>	 <p><b>Ethical standards compliant</b> Animal-free production</p>

Anti-CD35 antibody [SP191] (ab227666)

**Please note:** All products are "FOR RESEARCH USE ONLY. NOT FOR USE IN DIAGNOSTIC PROCEDURES"

### Our Abpromise to you: Quality guaranteed and expert technical support

- Replacement or refund for products not performing as stated on the datasheet
- Valid for 12 months from date of delivery
- Response to your inquiry within 24 hours
- We provide support in Chinese, English, French, German, Japanese and Spanish
- Extensive multi-media technical resources to help you
- We investigate all quality concerns to ensure our products perform to the highest standards

If the product does not perform as described on this datasheet, we will offer a refund or replacement. For full details of the Abpromise, please visit <https://www.abcam.com/abpromise> or contact our technical team.

### Terms and conditions

- Guarantee only valid for products bought direct from Abcam or one of our authorized distributors