




Product datasheet

Anti-CD38 antibody ab244390

6 Images

Overview

Product name	Anti-CD38 antibody
Description	Rabbit polyclonal to CD38
Host species	Rabbit
Tested applications	Suitable for: IHC-P, WB, ICC/IF
Species reactivity	Reacts with: Human Predicted to work with: Cynomolgus monkey 
Immunogen	Recombinant fragment corresponding to Human CD38 aa 150 to the C-terminus. Database link: P28907  Run BLAST with  Run BLAST with
Positive control	IHC-P: Human tonsil, rectum and tonsil tissue. WB: Daudi cell lysate. CD38 overexpression HEK-293T cell lysate. ICC/IF: A549 cells.
General notes	<p>The Life Science industry has been in the grips of a reproducibility crisis for a number of years. Abcam is leading the way in addressing this with our range of recombinant monoclonal antibodies and knockout edited cell lines for gold-standard validation. Please check that this product meets your needs before purchasing.</p> <p>If you have any questions, special requirements or concerns, please send us an inquiry and/or contact our Support team ahead of purchase. Recommended alternatives for this product can be found below, along with publications, customer reviews and Q&As</p>

Properties

Form	Liquid
Storage instructions	Shipped at 4°C. Store at +4°C short term (1-2 weeks). Upon delivery aliquot. Store at -20°C long term. Avoid freeze / thaw cycle.
Storage buffer	pH: 7.20 Preservative: 0.02% Sodium azide Constituents: PBS, 40% Glycerol (glycerin, glycerine)
Purity	Immunogen affinity purified
Clonality	Polyclonal
Isotype	IgG

Applications

The Abpromise guarantee Our **Abpromise guarantee** covers the use of ab244390 in the following tested applications.

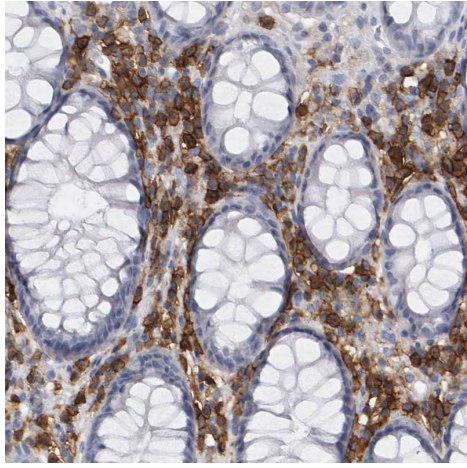
The application notes include recommended starting dilutions; optimal dilutions/concentrations should be determined by the end user.

Application	Abreviews	Notes
IHC-P		1/1000 - 1/2500. Perform heat mediated antigen retrieval with citrate buffer pH 6 before commencing with IHC staining protocol.
WB		Use a concentration of 0.04 - 0.4 µg/ml.
ICC/IF		Use a concentration of 0.25 - 2 µg/ml. Fixation/Permeabilization: PFA/Triton X-100.

Target

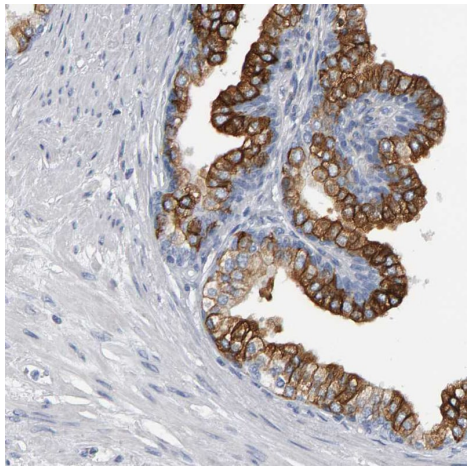
Function	Synthesizes cyclic ADP-ribose, a second messenger for glucose-induced insulin secretion. Also has cADPr hydrolase activity. Also moonlights as a receptor in cells of the immune system.
Tissue specificity	Expressed at high levels in pancreas, liver, kidney, brain, testis, ovary, placenta, malignant lymphoma and neuroblastoma.
Sequence similarities	Belongs to the ADP-ribosyl cyclase family.
Developmental stage	Preferentially expressed at both early and late stages of the B and T-cell maturation. It is also detected on erythroid and myeloid progenitors in bone marrow, where the level of surface expression was shown to decrease during differentiation of blast-forming unit E to colony-forming unit E.
Cellular localization	Membrane.
Form	There are 2 isoforms produced by alternative splicing.

Images



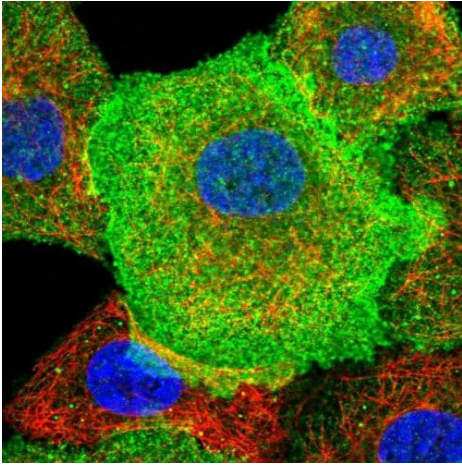
Paraffin-embedded human rectum tissue stained for CD38 using ab244390 at 1/1000 dilution in immunohistochemical analysis.

Immunohistochemistry (Formalin/PFA-fixed paraffin-embedded sections) - Anti-CD38 antibody (ab244390)



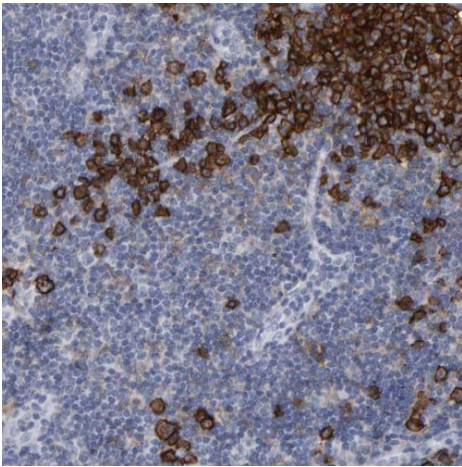
Paraffin-embedded human prostate tissue stained for CD38 using ab244390 at 1/1000 dilution in immunohistochemical analysis.

Immunohistochemistry (Formalin/PFA-fixed paraffin-embedded sections) - Anti-CD38 antibody (ab244390)



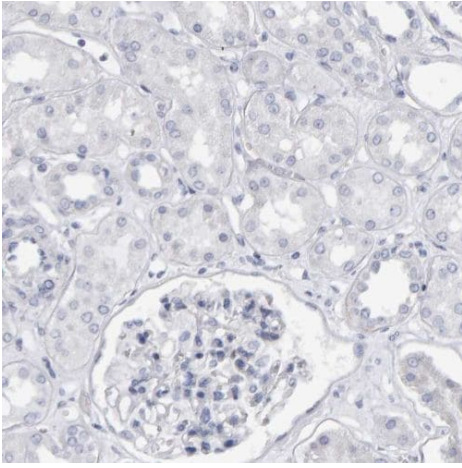
PFA-fixed, Triton X-100 permeabilized A549 (human lung carcinoma cell line) cells stained for CD38 (green) using ab244390 at 4 µg/ml in ICC/IF.

Immunocytochemistry/ Immunofluorescence - Anti-CD38 antibody (ab244390)



Paraffin-embedded human tonsil tissue stained for CD38 using ab244390 at 1/1000 dilution in immunohistochemical analysis.

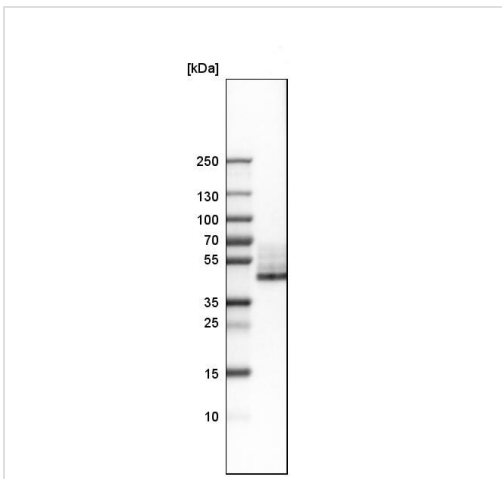
Immunohistochemistry (Formalin/PFA-fixed paraffin-embedded sections) - Anti-CD38 antibody (ab244390)



Immunohistochemistry (Formalin/PFA-fixed paraffin-embedded sections) - Anti-CD38 antibody (ab244390)

Paraffin-embedded human kidney tissue stained for CD38 using ab244390 at 1/1000 dilution in immunohistochemical analysis.

Low expression as expected.



Western blot - Anti-CD38 antibody (ab244390)

Anti-CD38 antibody (ab244390) at 0.4 $\mu\text{g/ml}$ + Daudi (Human Burkitt's lymphoma cell line) cell lysate

Please note: All products are "FOR RESEARCH USE ONLY. NOT FOR USE IN DIAGNOSTIC PROCEDURES"

Our Abpromise to you: Quality guaranteed and expert technical support

- Replacement or refund for products not performing as stated on the datasheet
- Valid for 12 months from date of delivery
- Response to your inquiry within 24 hours
- We provide support in Chinese, English, French, German, Japanese and Spanish
- Extensive multi-media technical resources to help you
- We investigate all quality concerns to ensure our products perform to the highest standards

If the product does not perform as described on this datasheet, we will offer a refund or replacement. For full details of the Abpromise, please visit <https://www.abcam.com/abpromise> or contact our technical team.

Terms and conditions

- Guarantee only valid for products bought direct from Abcam or one of our authorized distributors