

## Product datasheet

### Anti-CD4 antibody [GK1.5] ab269348

3 Images

#### Overview

<b>Product name</b>	Anti-CD4 antibody [GK1.5]
<b>Description</b>	Rat monoclonal [GK1.5] to CD4
<b>Host species</b>	Rat
<b>Tested applications</b>	<b>Suitable for:</b> Flow Cyt
<b>Species reactivity</b>	<b>Reacts with:</b> Mouse
<b>Immunogen</b>	Tissue, cells or virus corresponding to Mouse CD4. CTL clone V4 cells. Database link: <a href="#">P06332</a>
<b>Positive control</b>	Flow Cyt: Murine splenocytes.
<b>General notes</b>	<p>The Life Science industry has been in the grips of a reproducibility crisis for a number of years. Abcam is leading the way in addressing this with our range of recombinant monoclonal antibodies and knockout edited cell lines for gold-standard validation. Please check that this product meets your needs before purchasing.</p> <p>If you have any questions, special requirements or concerns, please send us an inquiry and/or contact our Support team ahead of purchase. Recommended alternatives for this product can be found below, along with publications, customer reviews and Q&amp;As</p>

#### Properties

<b>Form</b>	Liquid
<b>Storage instructions</b>	Shipped at 4°C. Store at +4°C short term (1-2 weeks). Upon delivery aliquot. Store at -20°C. Avoid freeze / thaw cycle.
<b>Storage buffer</b>	pH: 7.40 Constituent: PBS
<b>Purity</b>	Protein G purified
<b>Clonality</b>	Monoclonal
<b>Clone number</b>	GK1.5
<b>Isotype</b>	IgG2b

#### Applications

## The Abpromise guarantee

Our **Abpromise guarantee** covers the use of ab269348 in the following tested applications.

The application notes include recommended starting dilutions; optimal dilutions/concentrations should be determined by the end user.

Application	Abreviews	Notes
Flow Cyt		Use 10µl for 10 <sup>6</sup> cells.

## Target

### Function

Accessory protein for MHC class-II antigen/T-cell receptor interaction. May regulate T-cell activation. Induces the aggregation of lipid rafts.

### Sequence similarities

Contains 3 Ig-like C2-type (immunoglobulin-like) domains.  
Contains 1 Ig-like V-type (immunoglobulin-like) domain.

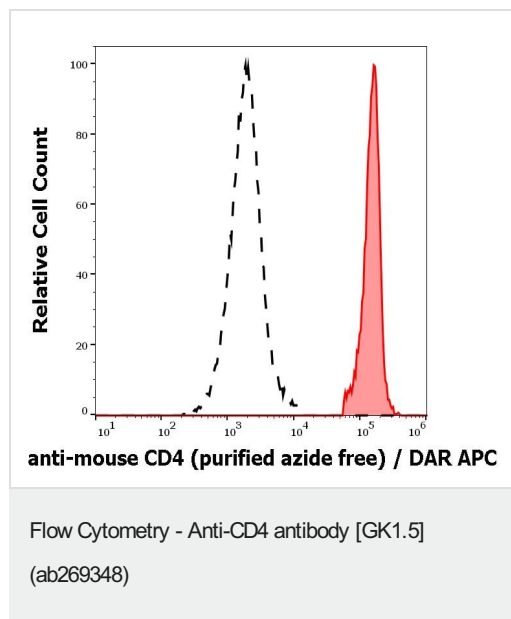
### Post-translational modifications

Palmitoylation and association with LCK contribute to the enrichment of CD4 in lipid rafts.

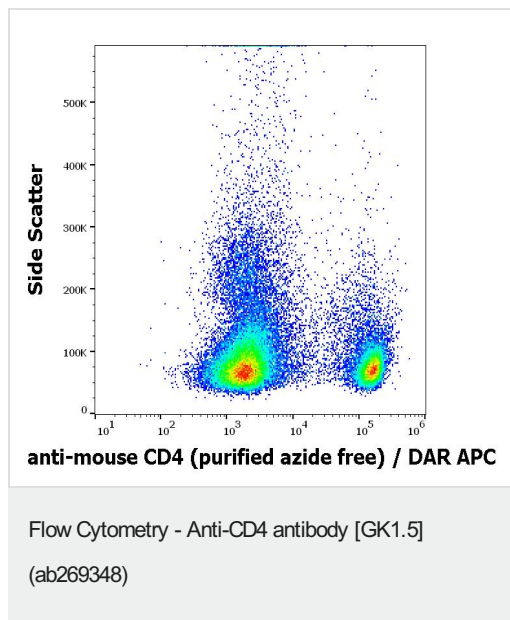
### Cellular localization

Cell membrane. Localizes to lipid rafts. Removed from plasma membrane by HIV-1 Nef protein that increases clathrin-dependent endocytosis of this antigen to target it to lysosomal degradation. Cell surface expression is also down-modulated by HIV-1 Envelope glycoprotein gp160 that interacts with, and sequesters CD4 in the endoplasmic reticulum.

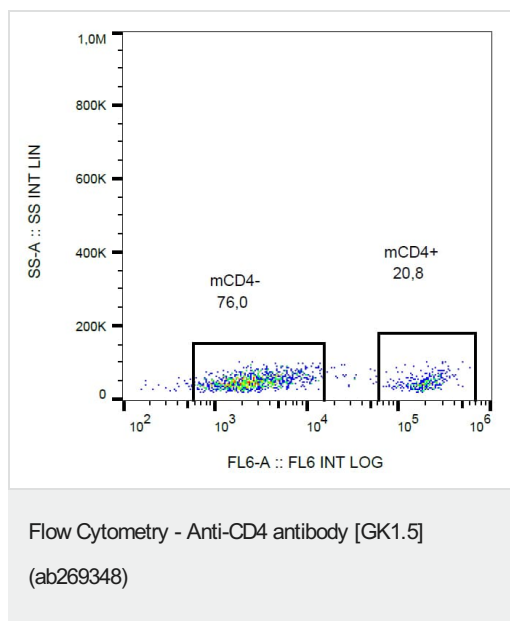
## Images



Flow cytometric analysis of mouse splenocyte suspension stained with 4 µg / ml ab269348 where CD4 positive cells are in red and CD4 negative cells are in black.



Flow cytometry pattern of mouse splenocyte suspension stained with ab269348 with a concentration of 4 µg / ml in the sample



Flow cytometry analysis (surface staining) of CD4 in murine splenocytes labeling CD4 with ab269348.

**Please note:** All products are "FOR RESEARCH USE ONLY. NOT FOR USE IN DIAGNOSTIC PROCEDURES"

### Our Abpromise to you: Quality guaranteed and expert technical support

- Replacement or refund for products not performing as stated on the datasheet
- Valid for 12 months from date of delivery
- Response to your inquiry within 24 hours

- We provide support in Chinese, English, French, German, Japanese and Spanish
- Extensive multi-media technical resources to help you
- We investigate all quality concerns to ensure our products perform to the highest standards

If the product does not perform as described on this datasheet, we will offer a refund or replacement. For full details of the Abpromise, please visit <https://www.abcam.com/abpromise> or contact our technical team.

#### **Terms and conditions**

---

- Guarantee only valid for products bought direct from Abcam or one of our authorized distributors