

Product datasheet

Anti-CD43 antibody [MEM-59] ab9088

[7 References](#) [2 Images](#)

Overview

Product name	Anti-CD43 antibody [MEM-59]
Description	Mouse monoclonal [MEM-59] to CD43
Host species	Mouse
Specificity	Recognizes neuraminidase-sensitive epitope on human CD43 molecule (Leukosialin), which is involved in lymphocyte activation.
Tested applications	Suitable for: Flow Cyt, IHC-P
Species reactivity	Reacts with: Human
Immunogen	Tissue, cells or virus corresponding to Human CD43. Human T lymphocytes
Positive control	IHC-P: Human spleen tissue.
General notes	<p>The Life Science industry has been in the grips of a reproducibility crisis for a number of years. Abcam is leading the way in addressing this with our range of recombinant monoclonal antibodies and knockout edited cell lines for gold-standard validation. Please check that this product meets your needs before purchasing.</p> <p>If you have any questions, special requirements or concerns, please send us an inquiry and/or contact our Support team ahead of purchase. Recommended alternatives for this product can be found below, along with publications, customer reviews and Q&As</p>

Properties

Form	Liquid
Storage instructions	Shipped at 4°C. Store at +4°C short term (1-2 weeks). Upon delivery aliquot. Store at -20°C or -80°C. Avoid freeze / thaw cycle.
Storage buffer	pH: 7.40 Preservative: 0.097% Sodium azide Constituent: PBS
Purity	Protein A purified
Purification notes	Purified from TCS. Purity >95% by SDS-PAGE.
Clonality	Monoclonal
Clone number	MEM-59
Isotype	IgG1

Applications

The Abpromise guarantee

Our **Abpromise guarantee** covers the use of ab9088 in the following tested applications.

The application notes include recommended starting dilutions; optimal dilutions/concentrations should be determined by the end user.

Application	Abreviews	Notes
Flow Cyt		Use a concentration of 1 - 5 µg/ml.
IHC-P		Use a concentration of 10 µg/ml.

Target

Function

One of the major glycoproteins of thymocytes and T lymphocytes. Plays a role in the physicochemical properties of the T-cell surface and in lectin binding. Presents carbohydrate ligands to selectins. Has an extended rodlike structure that could protrude above the glycocalyx of the cell and allow multiple glycan chains to be accessible for binding. Is a counter receptor for SN/Siglec-1 (By similarity). During T-cell activation is actively removed from the T-cell-APC (antigen-presenting cell) contact site thus suggesting a negative regulatory role in adaptive immune response.

Tissue specificity

Cell surface of thymocytes, T-lymphocytes, neutrophils, plasma cells and myelomas.

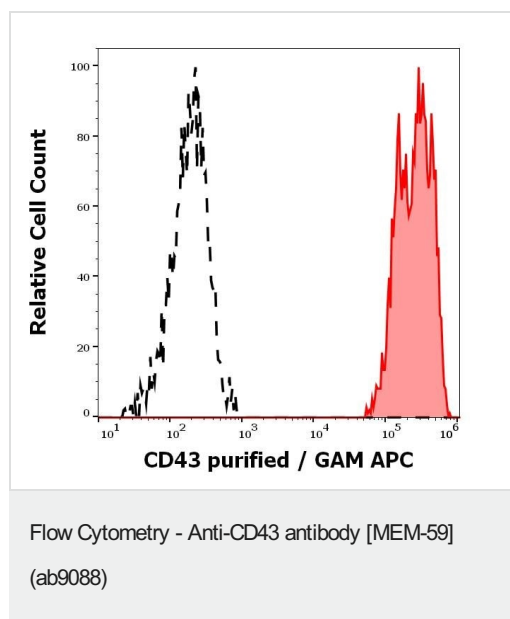
Post-translational modifications

Glycosylated; has a high content of sialic acid and O-linked carbohydrate structures.

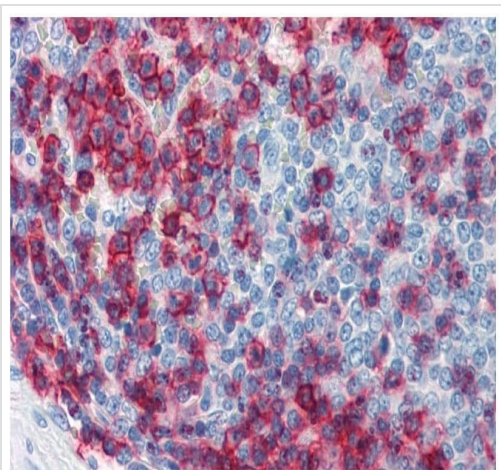
Cellular localization

Membrane.

Images



Flow cytometric analysis of Human Peripheral Blood cells labelling CD43 with ab9088 at 2 µg/ml showing separation of human CD43 positive lymphocytes (red-filled) from human CD43 negative blood debris (black-dashed).



Immunohistochemical analysis of Paraffin-embedded sections
Human Spleen tissue labelling CD43 with ab9088.

Immunohistochemistry (Formalin/PFA-fixed paraffin-embedded sections) - Anti-CD43 antibody [MEM-59] (ab9088)

Please note: All products are "FOR RESEARCH USE ONLY. NOT FOR USE IN DIAGNOSTIC PROCEDURES"

Our Abpromise to you: Quality guaranteed and expert technical support

- Replacement or refund for products not performing as stated on the datasheet
- Valid for 12 months from date of delivery
- Response to your inquiry within 24 hours
- We provide support in Chinese, English, French, German, Japanese and Spanish
- Extensive multi-media technical resources to help you
- We investigate all quality concerns to ensure our products perform to the highest standards

If the product does not perform as described on this datasheet, we will offer a refund or replacement. For full details of the Abpromise, please visit <https://www.abcam.com/abpromise> or contact our technical team.

Terms and conditions

- Guarantee only valid for products bought direct from Abcam or one of our authorized distributors