

Product datasheet

Anti-CD55 antibody ab230638

3 Images

Overview

Product name	Anti-CD55 antibody
Description	Rabbit polyclonal to CD55
Host species	Rabbit
Tested applications	Suitable for: IHC-P, WB, ICC/IF
Species reactivity	Reacts with: Human
Immunogen	Recombinant fragment within Human CD55 aa 71-330. The exact sequence is proprietary. Database link: P08174
Positive control	WB: THP-1 whole cell lysate. IHC-P: Human lung tissue. ICC/IF: HeLa cells.
General notes	<p>The Life Science industry has been in the grips of a reproducibility crisis for a number of years. Abcam is leading the way in addressing this with our range of recombinant monoclonal antibodies and knockout edited cell lines for gold-standard validation. Please check that this product meets your needs before purchasing.</p> <p>If you have any questions, special requirements or concerns, please send us an inquiry and/or contact our Support team ahead of purchase. Recommended alternatives for this product can be found below, along with publications, customer reviews and Q&As</p>

Properties

Form	Liquid
Storage instructions	Shipped at 4°C. Store at +4°C short term (1-2 weeks). Upon delivery aliquot. Store at -20°C long term. Avoid freeze / thaw cycle.
Storage buffer	pH: 7.00 Preservative: 0.01% Thimerosal (merthiolate) Constituents: 10% Glycerol (glycerin, glycerine), Tris glycine
Purity	Immunogen affinity purified
Clonality	Polyclonal
Isotype	IgG

Applications

The Abpromise guarantee

Our **Abpromise guarantee** covers the use of ab230638 in the following tested applications.

The application notes include recommended starting dilutions; optimal dilutions/concentrations should be determined by the end user.

Application	Abreviews	Notes
IHC-P		Use a concentration of 5 µg/ml.
WB		1/500 - 1/3000. Predicted molecular weight: 41 kDa.
ICC/IF		1/100 - 1/1000.

Target

Function

This protein recognizes C4b and C3b fragments that condense with cell-surface hydroxyl or amino groups when nascent C4b and C3b are locally generated during C4 and c3 activation. Interaction of daf with cell-associated C4b and C3b polypeptides interferes with their ability to catalyze the conversion of C2 and factor B to enzymatically active C2a and Bb and thereby prevents the formation of C4b2a and C3bBb, the amplification convertases of the complement cascade.

Tissue specificity

Expressed on the plasma membranes of all cell types that are in intimate contact with plasma complement proteins. It is also found on the surfaces of epithelial cells lining extracellular compartments, and variants of the molecule are present in body fluids and in extracellular matrix.

Sequence similarities

Belongs to the receptors of complement activation (RCA) family.
Contains 4 Sushi (CCP/SCR) domains.

Domain

The first Sushi domain (SCR1) is not necessary for function. SCR2 and SCR4 provide the proper conformation for the active site on SCR3.

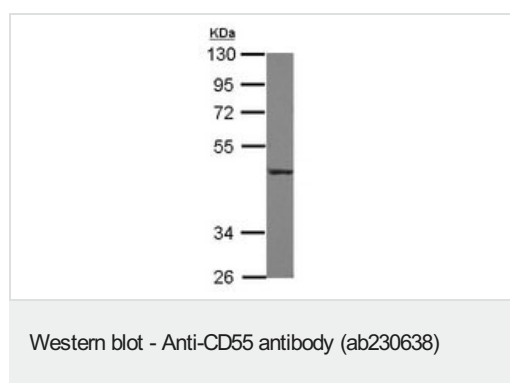
Post-translational modifications

The Ser/Thr-rich domain is heavily O-glycosylated.

Cellular localization

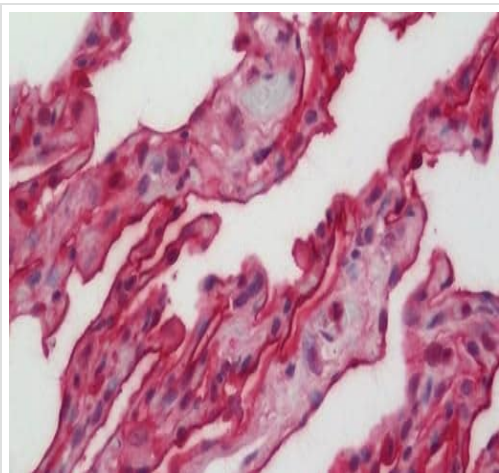
Cell membrane.

Images



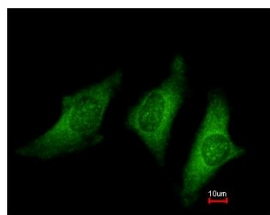
Anti-CD55 antibody (ab230638) at 1/1000 dilution + THP-1 (human monocytic leukemia cell line) whole cell lysate at 30 µg

Predicted band size: 41 kDa



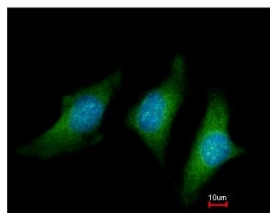
Formalin-fixed, paraffin-embedded human lung tissue stained for CD55 using ab230638 at 5 µg/ml in immunohistochemical analysis.

Immunohistochemistry (Formalin/PFA-fixed paraffin-embedded sections) - Anti-CD55 antibody (ab230638)



Methanol-fixed HeLa (human epithelial cell line from cervix adenocarcinoma) cells stained for CD55 (green) using ab230638 at 1/200 dilution in ICC/IF.

Nuclear counterstain: Hoechst 33342 (blue).



Immunocytochemistry/ Immunofluorescence - Anti-CD55 antibody (ab230638)

Please note: All products are "FOR RESEARCH USE ONLY. NOT FOR USE IN DIAGNOSTIC PROCEDURES"

Our Abpromise to you: Quality guaranteed and expert technical support

- Replacement or refund for products not performing as stated on the datasheet
- Valid for 12 months from date of delivery
- Response to your inquiry within 24 hours
- We provide support in Chinese, English, French, German, Japanese and Spanish

- Extensive multi-media technical resources to help you
- We investigate all quality concerns to ensure our products perform to the highest standards

If the product does not perform as described on this datasheet, we will offer a refund or replacement. For full details of the Abpromise, please visit <https://www.abcam.com/abpromise> or contact our technical team.

Terms and conditions

- Guarantee only valid for products bought direct from Abcam or one of our authorized distributors