

## Product datasheet

### Anti-CD55 antibody [EPR22362-255] ab243231

Recombinant RabMAb

4 Images

#### Overview

<b>Product name</b>	Anti-CD55 antibody [EPR22362-255]
<b>Description</b>	Rabbit monoclonal [EPR22362-255] to CD55
<b>Host species</b>	Rabbit
<b>Tested applications</b>	<b>Suitable for:</b> ICC/IF, Flow Cyt <b>Unsuitable for:</b> IHC-P or WB
<b>Species reactivity</b>	<b>Reacts with:</b> Human
<b>Immunogen</b>	Recombinant fragment. This information is proprietary to Abcam and/or its suppliers.
<b>Positive control</b>	ICC/IF: Human peripheral blood mononuclear cells. Flow cyt: Human peripheral blood mononuclear cells.
<b>General notes</b>	<p>This product is a recombinant monoclonal antibody, which offers several advantages including:</p> <ul style="list-style-type: none"> <li>- High batch-to-batch consistency and reproducibility</li> <li>- Improved sensitivity and specificity</li> <li>- Long-term security of supply</li> <li>- Animal-free production</li> </ul> <p>For more information <a href="#">see here</a>.</p> <p>Our RabMAb<sup>®</sup> technology is a patented hybridoma-based technology for making rabbit monoclonal antibodies. For details on our patents, please refer to <a href="#">RabMAb<sup>®</sup> patents</a>.</p>

#### Properties

<b>Form</b>	Liquid
<b>Storage instructions</b>	Shipped at 4°C. Store at +4°C short term (1-2 weeks). Upon delivery aliquot. Store at -20°C long term. Avoid freeze / thaw cycle.
<b>Storage buffer</b>	<p>pH: 7.2</p> <p>Preservative: 0.01% Sodium azide</p> <p>Constituents: PBS, 40% Glycerol (glycerin, glycerine), 0.05% BSA</p>
<b>Purity</b>	Protein A purified
<b>Clonality</b>	Monoclonal
<b>Clone number</b>	EPR22362-255

Isotype

IgG

## Applications

### The Abpromise guarantee

Our **Abpromise guarantee** covers the use of ab243231 in the following tested applications.

The application notes include recommended starting dilutions; optimal dilutions/concentrations should be determined by the end user.

Application	Abreviews	Notes
ICC/IF		1/100.
Flow Cyt		1/500.

### Application notes

Is unsuitable for IHC-P or WB.

## Target

### Function

This protein recognizes C4b and C3b fragments that condense with cell-surface hydroxyl or amino groups when nascent C4b and C3b are locally generated during C4 and c3 activation. Interaction of daf with cell-associated C4b and C3b polypeptides interferes with their ability to catalyze the conversion of C2 and factor B to enzymatically active C2a and Bb and thereby prevents the formation of C4b2a and C3bBb, the amplification convertases of the complement cascade.

### Tissue specificity

Expressed on the plasma membranes of all cell types that are in intimate contact with plasma complement proteins. It is also found on the surfaces of epithelial cells lining extracellular compartments, and variants of the molecule are present in body fluids and in extracellular matrix.

### Sequence similarities

Belongs to the receptors of complement activation (RCA) family.  
Contains 4 Sushi (CCP/SCR) domains.

### Domain

The first Sushi domain (SCR1) is not necessary for function. SCR2 and SCR4 provide the proper conformation for the active site on SCR3.

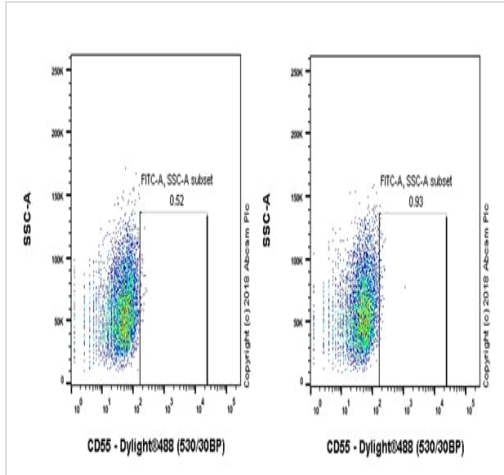
### Post-translational modifications

The Ser/Thr-rich domain is heavily O-glycosylated.

### Cellular localization

Cell membrane.

## Images

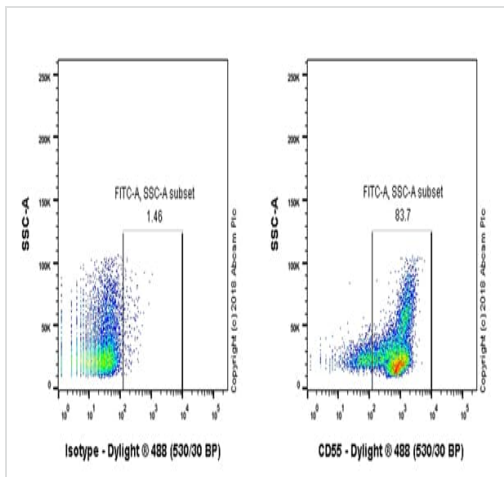


Flow Cytometry - Anti-CD55 antibody [EPR22362-255] (ab243231)

Flow cytometric analysis of IMR-32 (human neuroblastoma neuroblast cell line) cells labeling CD55 with ab243231 at 1/500 (Right panel) compared with Rabbit IgG, monoclonal [EPR25A] - Isotype Control (**ab172730**) (Left panel). Goat anti rabbit IgG (Dylight<sup>®</sup> 488), at 1/2000 dilution was used as the secondary antibody.

Gated on viable cells.

**Negative control:** IMR-32 (PMID: 27043658 and 15699172).

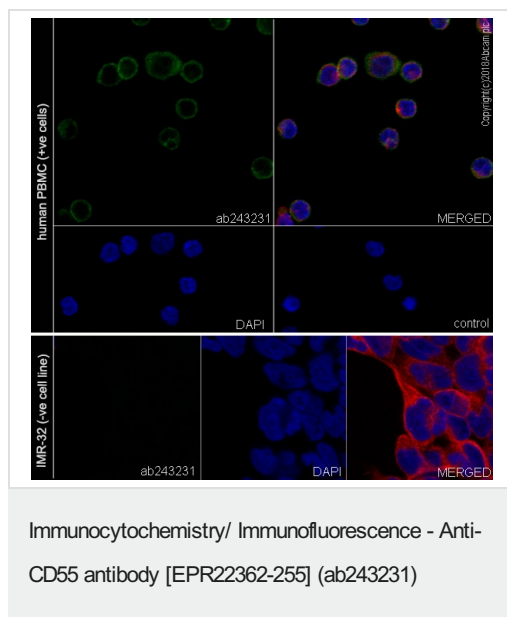


Flow Cytometry - Anti-CD55 antibody [EPR22362-255] (ab243231)

Flow cytometric analysis of human peripheral blood mononuclear cells labeling CD55 with ab243231 at 1/500 (Right panel) compared with Rabbit IgG, monoclonal [EPR25A] - Isotype Control (**ab172730**) (Left panel). Goat anti rabbit IgG (Dylight<sup>®</sup> 488), at 1/2000 dilution was used as the secondary antibody.

Gated on viable cells.

Relative levels of CD55 expression on monocytes (SSC high population) and lymphocyte (main population, SSC low) subsets was described in the literature (PMID: 16999828).



Immunofluorescent analysis of 4% paraformaldehyde-fixed, 0.1% Triton X-100 permeabilized human peripheral blood mononuclear cells labeling CD55 with ab243231 at 1/100 dilution, followed by Goat Anti-Rabbit IgG H&L (Alexa Fluor® 488) (**ab150077**) secondary antibody at 1/1000 dilution (green). Confocal image showing Membranous staining in human PBMC cells. The nuclear counter stain is DAPI (blue). Tubulin is detected with Anti-alpha Tubulin antibody [DM1A] - Microtubule Marker (Alexa Fluor® 594) (**ab195889**) at 1/200 dilution.

Control: Used PBS instead of primary antibody, followed by Goat Anti-Rabbit IgG H&L (Alexa Fluor® 488) (**ab150077**) secondary antibody at 1/1000 dilution.

**Negative control:** IMR-32 (PMID: 27043658).

Why choose a recombinant antibody?

**Research with confidence**  
Consistent and reproducible results

**Long-term and scalable supply**  
Recombinant technology

**Success from the first experiment**  
Confirmed specificity

**Ethical standards compliant**  
Animal-free production

Anti-CD55 antibody [EPR22362-255] (ab243231)

**Please note:** All products are "FOR RESEARCH USE ONLY. NOT FOR USE IN DIAGNOSTIC PROCEDURES"

## Our Abpromise to you: Quality guaranteed and expert technical support

- Replacement or refund for products not performing as stated on the datasheet
- Valid for 12 months from date of delivery
- Response to your inquiry within 24 hours
- We provide support in Chinese, English, French, German, Japanese and Spanish
- Extensive multi-media technical resources to help you
- We investigate all quality concerns to ensure our products perform to the highest standards

If the product does not perform as described on this datasheet, we will offer a refund or replacement. For full details of the Abpromise, please visit <https://www.abcam.com/abpromise> or contact our technical team.

#### **Terms and conditions**

---

- Guarantee only valid for products bought direct from Abcam or one of our authorized distributors