

Product datasheet

Anti-CD62E antibody [UZ6] ab2497

★★★★★ [1 Abreviews](#) [6 References](#) [1 Image](#)

Overview

Product name	Anti-CD62E antibody [UZ6]
Description	Rat monoclonal [UZ6] to CD62E
Host species	Rat
Tested applications	Suitable for: ICC/IF
Species reactivity	Reacts with: Mouse
Positive control	ICC/IF: CHO-cells transfected with E-Selectin.
General notes	<p>The Life Science industry has been in the grips of a reproducibility crisis for a number of years. Abcam is leading the way in addressing this with our range of recombinant monoclonal antibodies and knockout edited cell lines for gold-standard validation. Please check that this product meets your needs before purchasing.</p> <p>If you have any questions, special requirements or concerns, please send us an inquiry and/or contact our Support team ahead of purchase. Recommended alternatives for this product can be found below, along with publications, customer reviews and Q&As</p>

Properties

Form	Liquid
Storage instructions	Shipped at 4°C. Store at +4°C short term (1-2 weeks). Upon delivery aliquot. Store at -20°C or -80°C. Avoid freeze / thaw cycle.
Storage buffer	Preservative: 0.09% Sodium azide Constituent: PBS
Purity	Protein A purified
Clonality	Monoclonal
Clone number	UZ6
Myeloma	Sp2/0
Isotype	IgG2b

Applications

The Abpromise guarantee

Our [Abpromise guarantee](#) covers the use of ab2497 in the following tested applications.

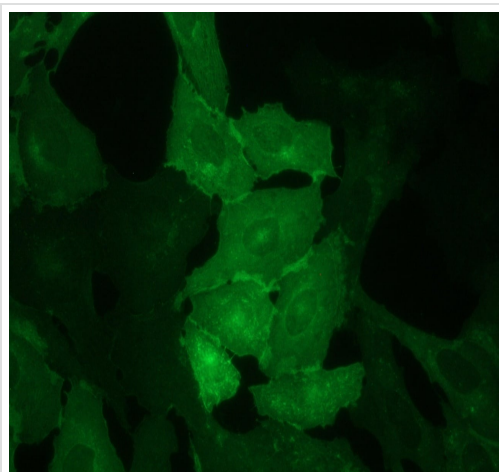
The application notes include recommended starting dilutions; optimal dilutions/concentrations should be determined by the end user.

Application	Abreviews	Notes
ICC/IF		Use at an assay dependent concentration.

Target

Function	Cell-surface glycoprotein having a role in immunoadhesion. Mediates in the adhesion of blood neutrophils in cytokine-activated endothelium through interaction with PSGL1/SELPLG. May have a role in capillary morphogenesis.
Sequence similarities	Belongs to the selectin/LECAM family. Contains 1 C-type lectin domain. Contains 1 EGF-like domain. Contains 6 Sushi (CCP/SCR) domains.
Cellular localization	Membrane.

Images



CHO-cells transfected with E-Selectin stained with ab2497 at 1/500.

Immunocytochemistry/ Immunofluorescence - Anti-CD62E antibody [UZ6] (ab2497)

Please note: All products are "FOR RESEARCH USE ONLY. NOT FOR USE IN DIAGNOSTIC PROCEDURES"

Our Abpromise to you: Quality guaranteed and expert technical support

- Replacement or refund for products not performing as stated on the datasheet
- Valid for 12 months from date of delivery
- Response to your inquiry within 24 hours
- We provide support in Chinese, English, French, German, Japanese and Spanish
- Extensive multi-media technical resources to help you

- We investigate all quality concerns to ensure our products perform to the highest standards

If the product does not perform as described on this datasheet, we will offer a refund or replacement. For full details of the Abpromise, please visit <https://www.abcam.com/abpromise> or contact our technical team.

Terms and conditions

- Guarantee only valid for products bought direct from Abcam or one of our authorized distributors