

Anti-CD62L antibody [OX85] ab238473

1 Image

Overview

Product name	Anti-CD62L antibody [OX85]
Description	Mouse monoclonal [OX85] to CD62L
Host species	Mouse
Tested applications	Suitable for: Flow Cyt Unsuitable for: IHC-Fr
Species reactivity	Reacts with: Rat
Immunogen	Fusion protein corresponding to Rat CD62L (extracellular). Fused at the C-terminal end to domains 3 and 4 of rat CD4.
Positive control	Flow Cyt: Lewis rat splenocytes.
General notes	<p>This antibody clone is manufactured by Abcam. If you require a custom buffer formulation or conjugation for your experiments, please contact orders@abcam.com.</p> <p>The Life Science industry has been in the grips of a reproducibility crisis for a number of years. Abcam is leading the way in addressing this with our range of recombinant monoclonal antibodies and knockout edited cell lines for gold-standard validation. Please check that this product meets your needs before purchasing.</p> <p>If you have any questions, special requirements or concerns, please send us an inquiry and/or contact our Support team ahead of purchase. Recommended alternatives for this product can be found below, along with publications, customer reviews and Q&As</p>

Properties

Form	Liquid
Storage instructions	Shipped at 4°C. Store at +4°C short term (1-2 weeks). Upon delivery aliquot. Store at -20°C long term. Avoid freeze / thaw cycle.
Storage buffer	Preservative: 0.02% Sodium azide Constituent: PBS
Purity	Protein G purified
Purification notes	Purified from TCS.
Clonality	Monoclonal
Clone number	OX85

Isotype	IgG1
Light chain type	kappa

Applications

The Abpromise guarantee Our **Abpromise guarantee** covers the use of ab238473 in the following tested applications. The application notes include recommended starting dilutions; optimal dilutions/concentrations should be determined by the end user.

Application	Abreviews	Notes
Flow Cyt		Use a concentration of 0.2 µg/ml.

Application notes Is unsuitable for IHC-Fr.

Target

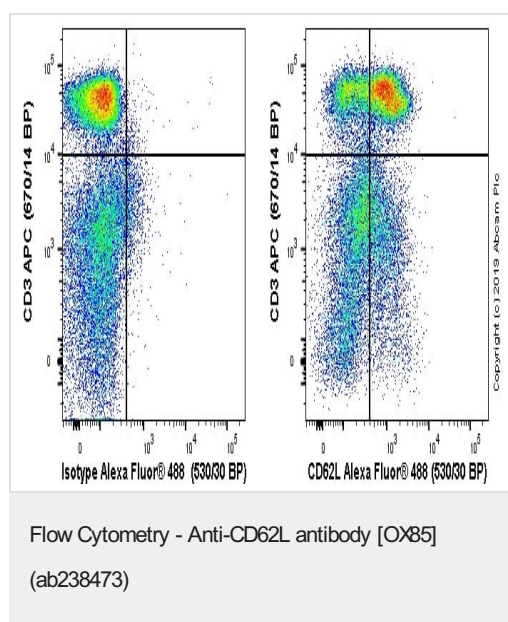
Function Cell surface adhesion protein. Mediates the adherence of lymphocytes to endothelial cells of high endothelial venules in peripheral lymph nodes. Promotes initial tethering and rolling of leukocytes in endothelia.

Tissue specificity Expressed in B cell lines and T lymphocytes.

Sequence similarities Belongs to the selectin/LECAM family.
Contains 1 C-type lectin domain.
Contains 1 EGF-like domain.
Contains 2 Sushi (CCP/SCR) domains.

Cellular localization Membrane.

Images



Lewis rat splenocytes stained with ab238473 (right) or mouse IgG1k (left). Lewis rat splenocytes were incubated for 30 min on ice in 10% rat serum to block FC receptors and non-specific protein-protein interaction followed by the antibody (ab238473) or mouse IgG1k Isotype (**ab170190**) (1×10^6 in 100µl at 0.2 µg/ml) for 30 min on ice.

The secondary antibody Goat Anti-Mouse IgG H&L (Alexa Fluor® 488, pre-adsorbed) (**ab150117**) was used at 1/2000 dilution for 30 min at 4°C. The cells were simultaneously stained with CD3 APC antibody.

Acquisition of >30,000 events were collected using a 50 mW Blue laser (488nm) and 530/30 bandpass filter. Events were gated on viable lymphocytes.

Please note: All products are "FOR RESEARCH USE ONLY. NOT FOR USE IN DIAGNOSTIC PROCEDURES"

Our Abpromise to you: Quality guaranteed and expert technical support

- Replacement or refund for products not performing as stated on the datasheet
- Valid for 12 months from date of delivery
- Response to your inquiry within 24 hours

- We provide support in Chinese, English, French, German, Japanese and Spanish
- Extensive multi-media technical resources to help you
- We investigate all quality concerns to ensure our products perform to the highest standards

If the product does not perform as described on this datasheet, we will offer a refund or replacement. For full details of the Abpromise, please visit <https://www.abcam.com/abpromise> or contact our technical team.

Terms and conditions

- Guarantee only valid for products bought direct from Abcam or one of our authorized distributors