

Anti-CD63 antibody - Late Endosome Marker ab216130

[103 References](#) [2 Images](#)

Overview

Product name	Anti-CD63 antibody - Late Endosome Marker
Description	Rabbit polyclonal to CD63 - Late Endosome Marker
Host species	Rabbit
Tested applications	Suitable for: IHC-P, WB
Species reactivity	Reacts with: Mouse, Human
Immunogen	Synthetic peptide within Human CD63. The exact sequence is proprietary. NP_001244318 Database link: P08962
Positive control	WB: NIH/3T3, K562 and HEK-293T cell lysates. IHC-P: Human liver cancer tissue.
General notes	<p>The Life Science industry has been in the grips of a reproducibility crisis for a number of years. Abcam is leading the way in addressing this with our range of recombinant monoclonal antibodies and knockout edited cell lines for gold-standard validation. Please check that this product meets your needs before purchasing.</p> <p>If you have any questions, special requirements or concerns, please send us an inquiry and/or contact our Support team ahead of purchase. Recommended alternatives for this product can be found below, along with publications, customer reviews and Q&As</p>

Properties

Form	Liquid
Storage instructions	Shipped at 4°C. Store at +4°C short term (1-2 weeks). Upon delivery aliquot. Store at -20°C long term. Avoid freeze / thaw cycle.
Storage buffer	pH: 7.40 Preservative: 0.05% Sodium azide Constituents: 40% Glycerol, PBS
Purity	Immunogen affinity purified
Clonality	Polyclonal
Isotype	IgG

Applications

The Abpromise guarantee

Our **Abpromise guarantee** covers the use of ab216130 in the following tested applications.

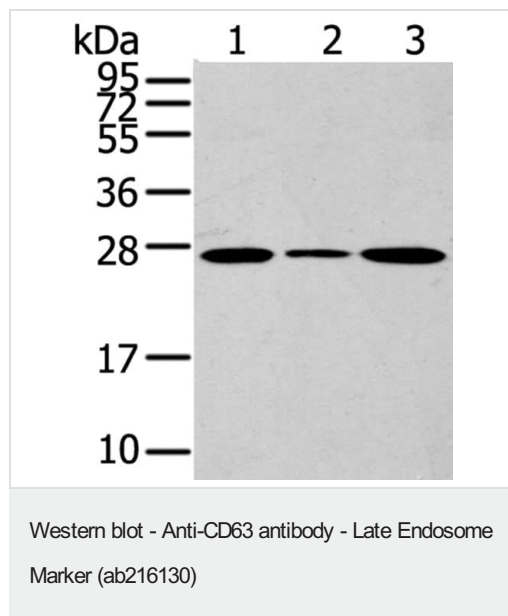
The application notes include recommended starting dilutions; optimal dilutions/concentrations should be determined by the end user.

Application	Abreviews	Notes
IHC-P		1/25 - 1/100.
WB		1/200 - 1/2000. Predicted molecular weight: 26 kDa. The observed molecular weight of CD63 may vary in the range of 25-65. This is due to a number of post translational modifications, post translation cleavages, relative charges, and other experimental factors, and therefore there really is no consensus molecular weight.

Target

Function	This antigen is associated with early stages of melanoma tumor progression. May play a role in growth regulation.
Tissue specificity	Dysplastic nevi, radial growth phase primary melanomas, hematopoietic cells, tissue macrophages.
Sequence similarities	Belongs to the tetraspanin (TM4SF) family.
Cellular localization	Cell membrane. Lysosome membrane. Late endosome membrane. Also found in Weibel-Palade bodies of endothelial cells. Located in platelet dense granules.

Images



All lanes : Anti-CD63 antibody - Late Endosome Marker (ab216130) at 1/200 dilution

Lane 1 : NIH/3T3 (Mouse embryo fibroblast cell line) cell lysate

Lane 2 : K562 (Human chronic myelogenous leukemia cell line from bone marrow cell lysate

Lane 3 : HEK-293T (Human epithelial cell line from embryonic kidney transformed with large T antigen) cell lysate

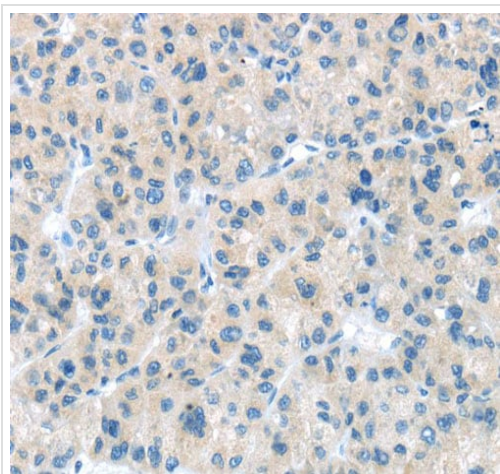
Lysates/proteins at 40 µg per lane.

Developed using the ECL technique.

Predicted band size: 26 kDa

Exposure time: 20 seconds

Reducing 12% SDS-PAGE



Immunohistochemistry (Formalin/PFA-fixed paraffin-embedded sections) - Anti-CD63 antibody - Late Endosome Marker (ab216130)

Paraffin-embedded human liver cancer tissue stained for CD63 with ab216130 at a 1/25 dilution in immunohistochemical analysis.

Heat mediated antigen retrieval step in citrate buffer was performed. The sample was then blocked and incubated with the antibody for 1.5 hours at 22°C. An HRP conjugated goat anti-rabbit antibody was used as the secondary antibody.

Please note: All products are "FOR RESEARCH USE ONLY. NOT FOR USE IN DIAGNOSTIC PROCEDURES"

Our Abpromise to you: Quality guaranteed and expert technical support

- Replacement or refund for products not performing as stated on the datasheet
- Valid for 12 months from date of delivery
- Response to your inquiry within 24 hours
- We provide support in Chinese, English, French, German, Japanese and Spanish
- Extensive multi-media technical resources to help you
- We investigate all quality concerns to ensure our products perform to the highest standards

If the product does not perform as described on this datasheet, we will offer a refund or replacement. For full details of the Abpromise, please visit <https://www.abcam.com/abpromise> or contact our technical team.

Terms and conditions

- Guarantee only valid for products bought direct from Abcam or one of our authorized distributors