

Product datasheet

Anti-CD64 antibody [10.1] ab119843

[9 References](#) [3 Images](#)

Overview

Product name	Anti-CD64 antibody [10.1]
Description	Mouse monoclonal [10.1] to CD64
Host species	Mouse
Tested applications	Suitable for: Flow Cyt
Species reactivity	Reacts with: Human
Immunogen	Tissue, cells or virus corresponding to Human CD64. Rheumatoid synovial fluid cells and fibronectin purified Human monocytes.
General notes	<p>The Life Science industry has been in the grips of a reproducibility crisis for a number of years. Abcam is leading the way in addressing this with our range of recombinant monoclonal antibodies and knockout edited cell lines for gold-standard validation. Please check that this product meets your needs before purchasing.</p> <p>If you have any questions, special requirements or concerns, please send us an inquiry and/or contact our Support team ahead of purchase. Recommended alternatives for this product can be found below, along with publications, customer reviews and Q&As</p>

Properties

Form	Liquid
Storage instructions	Shipped at 4°C. Upon delivery aliquot and store at -80°C. Avoid freeze / thaw cycles.
Storage buffer	pH: 7.40 Preservative: 0.1% Sodium azide Constituent: 99% PBS
Purity	Protein A purified
Purification notes	ab119843 is purified from cell culture supernatant by protein-A affinity chromatography. Purity is > 95% by SDS-PAGE.
Clonality	Monoclonal
Clone number	10.1
Isotype	IgG1

Applications

The Abpromise guarantee

Our **Abpromise guarantee** covers the use of ab119843 in the following tested applications.

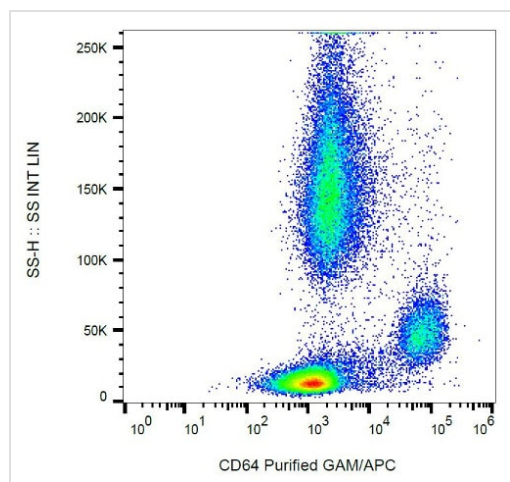
The application notes include recommended starting dilutions; optimal dilutions/concentrations should be determined by the end user.

Application	Abreviews	Notes
Flow Cyt		Use a concentration of 1 - 5 µg/ml. ab170190 - Mouse monoclonal IgG1, is suitable for use as an isotype control with this antibody.

Target

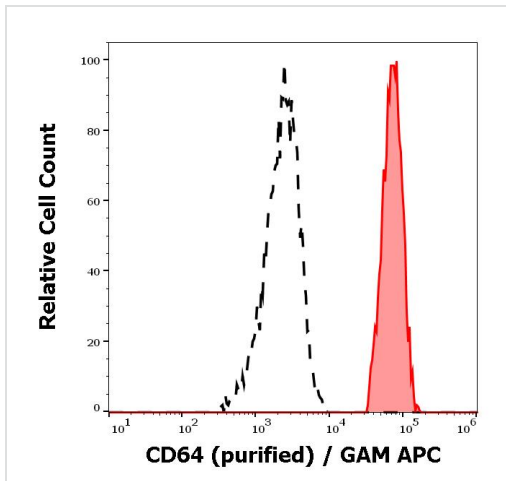
Function	High affinity receptor for the Fc region of immunoglobulins gamma. Functions in both innate and adaptive immune responses.
Tissue specificity	Monocyte/macrophage specific.
Sequence similarities	Belongs to the immunoglobulin superfamily. FCGR1 family. Contains 3 Ig-like C2-type (immunoglobulin-like) domains.
Post-translational modifications	Phosphorylated on serine residues.
Cellular localization	Cell membrane. Stabilized at the cell membrane through interaction with FCER1G.

Images



Surface staining of CD64 in human peripheral blood with anti-CD64 (10.1) purified, GAM-APC.

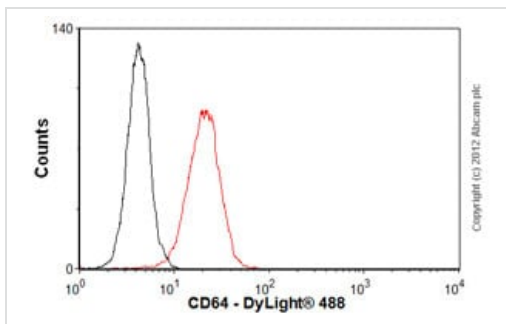
Flow Cytometry - Anti-CD64 antibody [10.1]
(ab119843)



Flow Cytometry - Anti-CD64 antibody [10.1]
(ab119843)

Flow Cytometry analysis of human peripheral whole blood labeling CD64 positive monocytes with ab119843 at 4 $\mu\text{g}/\text{mL}$ (red-filled).

Negative control: CD64 negative lymphocytes (black-dashed).



Flow Cytometry - Anti-CD64 antibody [10.1]
(ab119843)

Overlay histogram showing THP1 cells stained with ab119843 (red line). The cells were fixed with 4% paraformaldehyde (10 min) and incubated in 1x PBS / 10% normal goat serum / 0.3M glycine to block non-specific protein-protein interactions. The cells were then incubated with the antibody (ab119843, 1 $\mu\text{g}/1\times 10^6$ cells) for 30 min at 22°C. The secondary antibody used was DyLight® 488 goat anti-mouse IgG (H+L) (**ab96879**) at 1/500 dilution for 30 min at 22°C.

Isotype control antibody (black line) was mouse IgG1 [ICIGG1] (**ab91353**, 2 $\mu\text{g}/1\times 10^6$ cells) used under the same conditions.

Acquisition of >5,000 events was performed. This antibody gave a positive result in 80% methanol (5 min) fixed THP1 cells used under the same conditions.

Please note that Abcam do not have any data for use of this antibody on non-fixed cells. We welcome any customer feedback.

Please note: All products are "FOR RESEARCH USE ONLY. NOT FOR USE IN DIAGNOSTIC PROCEDURES"

Our Abpromise to you: Quality guaranteed and expert technical support

- Replacement or refund for products not performing as stated on the datasheet
- Valid for 12 months from date of delivery

- Response to your inquiry within 24 hours
- We provide support in Chinese, English, French, German, Japanese and Spanish
- Extensive multi-media technical resources to help you
- We investigate all quality concerns to ensure our products perform to the highest standards

If the product does not perform as described on this datasheet, we will offer a refund or replacement. For full details of the Abpromise, please visit <https://www.abcam.com/abpromise> or contact our technical team.

Terms and conditions

- Guarantee only valid for products bought direct from Abcam or one of our authorized distributors