

Product datasheet

Anti-CD68 antibody [3F7D3] ab201973

[5 References](#) [7 Images](#)

Overview

Product name	Anti-CD68 antibody [3F7D3]
Description	Mouse monoclonal [3F7D3] to CD68
Host species	Mouse
Tested applications	Suitable for: IHC-P, WB, ICC/IF, Flow Cyt
Species reactivity	Reacts with: Human
Immunogen	Recombinant fragment corresponding to Human CD68 aa 1-200. (Purified from E.coli). Database link: P34810
	Run BLAST with Run BLAST with
Positive control	Human CD68 (aa42-155) recombinant protein; CD68 (aa42-155)-hlgGfC transfected HEK293 cell lysate; HeLa cells; U937, HeLa, HepG2 and Jurkat whole cell lysate (ab7899); Human endometrial cancer and bladder cancer tissues.
General notes	<p>This product was changed from ascites to supernatant. Lot no's high than GR255595-19 are from Tissue Culture Supernatant</p> <p>The Life Science industry has been in the grips of a reproducibility crisis for a number of years. Abcam is leading the way in addressing this with our range of recombinant monoclonal antibodies and knockout edited cell lines for gold-standard validation. Please check that this product meets your needs before purchasing.</p> <p>If you have any questions, special requirements or concerns, please send us an inquiry and/or contact our Support team ahead of purchase. Recommended alternatives for this product can be found below, along with publications, customer reviews and Q&As</p>

Properties

Form	Liquid
Storage instructions	Shipped at 4°C. Store at +4°C short term (1-2 weeks). Upon delivery aliquot. Store at -20°C long term. Avoid freeze / thaw cycle.
Storage buffer	Preservative: 0.05% Sodium azide Constituent: 99% PBS
Purity	Protein G purified
Purification notes	Purified from tissue culture supernatant.
Clonality	Monoclonal

Clone number 3F7D3
Isotype IgG1

Applications

The Abpromise guarantee Our **Abpromise guarantee** covers the use of ab201973 in the following tested applications. The application notes include recommended starting dilutions; optimal dilutions/concentrations should be determined by the end user.

Application	Abreviews	Notes
IHC-P		1/200 - 1/1000.
WB		1/500 - 1/2000. Predicted molecular weight: 37 kDa.
ICC/IF		1/200 - 1/1000.
Flow Cyt		1/200 - 1/400. ab170190 - Mouse monoclonal IgG1, is suitable for use as an isotype control with this antibody.

Target

Function Could play a role in phagocytic activities of tissue macrophages, both in intracellular lysosomal metabolism and extracellular cell-cell and cell-pathogen interactions. Binds to tissue- and organ-specific lectins or selectins, allowing homing of macrophage subsets to particular sites. Rapid recirculation of CD68 from endosomes and lysosomes to the plasma membrane may allow macrophages to crawl over selectin-bearing substrates or other cells.

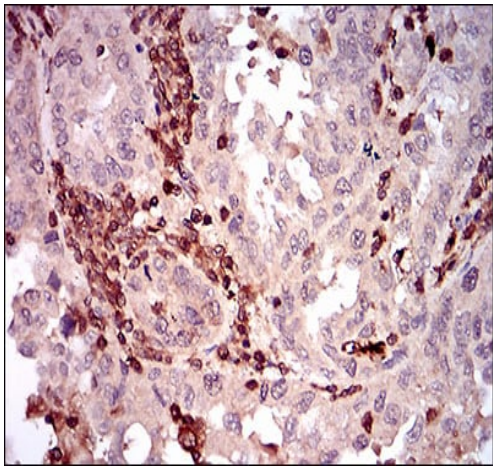
Tissue specificity Highly expressed by blood monocytes and tissue macrophages. Also expressed in lymphocytes, fibroblasts and endothelial cells. Expressed in many tumor cell lines which could allow them to attach to selectins on vascular endothelium, facilitating their dissemination to secondary sites.

Sequence similarities Belongs to the LAMP family.

Post-translational modifications N- and O-glycosylated.

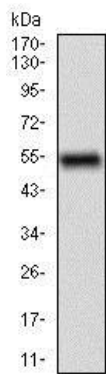
Cellular localization Cell membrane and Endosome membrane. Lysosome membrane.

Images



Immunohistochemical analysis of paraffin-embedded Human endometrial cancer tissue labeling CD68 with ab201973 at 1/200 dilution followed by DAB staining.

Immunohistochemistry (Formalin/PFA-fixed paraffin-embedded sections) - Anti-CD68 antibody [3F7D3] (ab201973)

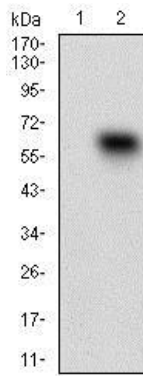


Anti-CD68 antibody [3F7D3] (ab201973) at 1/500 dilution + Human CD68 (aa42-155) recombinant protein

Predicted band size: 37 kDa

Expected MWt is 37.4 kDa.

Western blot - Anti-CD68 antibody [3F7D3] (ab201973)



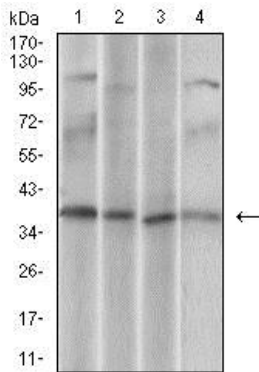
Western blot - Anti-CD68 antibody [3F7D3] (ab201973)

All lanes : Anti-CD68 antibody [3F7D3] (ab201973) at 1/500 dilution

Lane 1 : HEK293 cell lysate

Lane 2 : CD68 (aa42-155)-hlgGfc transfected HEK293 cell lysate

Predicted band size: 37 kDa



Western blot - Anti-CD68 antibody [3F7D3] (ab201973)

All lanes : Anti-CD68 antibody [3F7D3] (ab201973) at 1/500 dilution

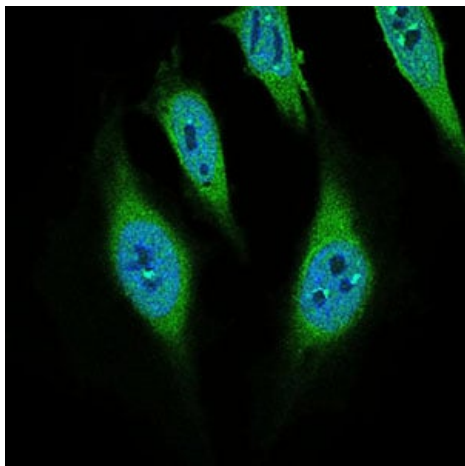
Lane 1 : U937 cell lysate

Lane 2 : HeLa cell lysate

Lane 3 : HepG2 cell lysate

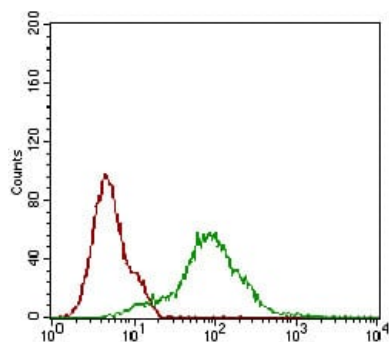
Lane 4 : Jurkat cell lysate

Predicted band size: 37 kDa



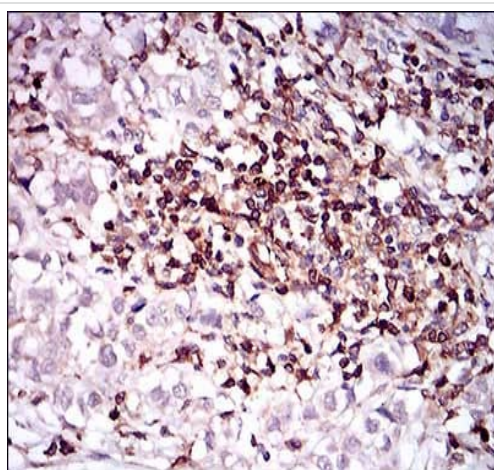
Immunocytochemistry/ Immunofluorescence - Anti-CD68 antibody [3F7D3] (ab201973)

Immunofluorescent analysis of HeLa cells labeling CD68 with ab201973 at 1/200 dilution (green). Blue: DRAQ5 fluorescent DNA dye.



Flow Cytometry - Anti-CD68 antibody [3F7D3] (ab201973)

Flow cytometric analysis of HeLa cells labeling CD68 with ab201973 at 1/200 dilution (green) compared to a negative control (red).



Immunohistochemistry (Formalin/PFA-fixed paraffin-embedded sections) - Anti-CD68 antibody [3F7D3] (ab201973)

Immunohistochemical analysis of paraffin-embedded Human bladder cancer tissue labeling CD68 with ab201973 at 1/200 dilution followed by DAB staining.

Our Abpromise to you: Quality guaranteed and expert technical support

- Replacement or refund for products not performing as stated on the datasheet
- Valid for 12 months from date of delivery
- Response to your inquiry within 24 hours

- We provide support in Chinese, English, French, German, Japanese and Spanish
- Extensive multi-media technical resources to help you
- We investigate all quality concerns to ensure our products perform to the highest standards

If the product does not perform as described on this datasheet, we will offer a refund or replacement. For full details of the Abpromise, please visit <https://www.abcam.com/abpromise> or contact our technical team.

Terms and conditions

- Guarantee only valid for products bought direct from Abcam or one of our authorized distributors