

Product datasheet

Anti-CD68 antibody [ED1] ab31630

★★★★★ [21 Abreviews](#) [367 References](#) [1 Image](#)

Overview

Product name	Anti-CD68 antibody [ED1]
Description	Mouse monoclonal [ED1] to CD68
Host species	Mouse
Specificity	Ab31630 recognises a single chain glycoprotein of 110kD that is expressed predominantly on the lysosomal membrane of myeloid cells. Weak cell surface expression also occurs. The antigen is expressed by the majority of tissue macrophages and weakly by peripheral blood granulocytes. Studies have shown that the antigen recognised by ED1 is the rat homologue of human CD68.
Tested applications	Suitable for: Flow Cyt (Intra)
Species reactivity	Reacts with: Rat
Immunogen	Tissue, cells or virus corresponding to Rat CD68. Rat spleen cell.
Positive control	Flow Cyt (Intra): Rat peritoneal macrophages.
General notes	<p>This product should be stored undiluted.</p> <p>The Life Science industry has been in the grips of a reproducibility crisis for a number of years. Abcam is leading the way in addressing this with our range of recombinant monoclonal antibodies and knockout edited cell lines for gold-standard validation. Please check that this product meets your needs before purchasing.</p> <p>If you have any questions, special requirements or concerns, please send us an inquiry and/or contact our Support team ahead of purchase. Recommended alternatives for this product can be found below, along with publications, customer reviews and Q&As</p>

Properties

Form	Liquid
Storage instructions	Shipped at 4°C. Store at +4°C short term (1-2 weeks). Upon delivery aliquot. Store at -20°C or -80°C. Avoid freeze / thaw cycle.
Storage buffer	pH: 7.40 Preservative: 0.09% Sodium azide Constituent: PBS
Purity	Protein A purified
Purification notes	Purified from tissue culture supernatant.

Clonality	Monoclonal
Clone number	ED1
Myeloma	Sp2/0-Ag14
Isotype	IgG1

Applications

The Abpromise guarantee Our **Abpromise guarantee** covers the use of ab31630 in the following tested applications.

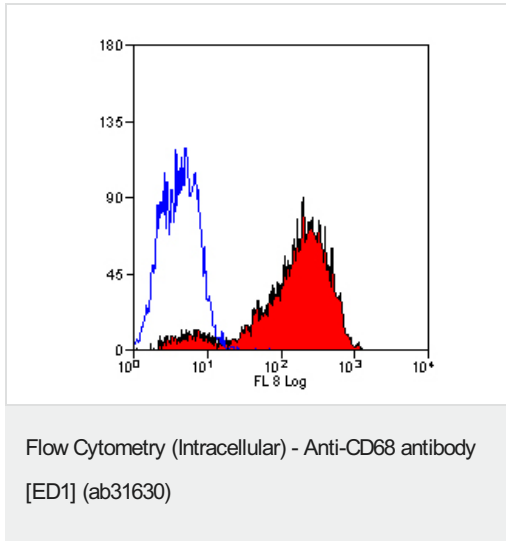
The application notes include recommended starting dilutions; optimal dilutions/concentrations should be determined by the end user.

Application	Abreviews	Notes
Flow Cyt (Intra)		1/50 - 1/100. Use 10µl of the suggested working dilution to label 10 ⁶ cells in 100µl. ab170190 - Mouse monoclonal IgG1, is suitable for use as an isotype control with this antibody.

Target

Function	Could play a role in phagocytic activities of tissue macrophages, both in intracellular lysosomal metabolism and extracellular cell-cell and cell-pathogen interactions. Binds to tissue- and organ-specific lectins or selectins, allowing homing of macrophage subsets to particular sites. Rapid recirculation of CD68 from endosomes and lysosomes to the plasma membrane may allow macrophages to crawl over selectin-bearing substrates or other cells.
Tissue specificity	Highly expressed by blood monocytes and tissue macrophages. Also expressed in lymphocytes, fibroblasts and endothelial cells. Expressed in many tumor cell lines which could allow them to attach to selectins on vascular endothelium, facilitating their dissemination to secondary sites.
Sequence similarities	Belongs to the LAMP family.
Post-translational modifications	N- and O-glycosylated.
Cellular localization	Cell membrane and Endosome membrane. Lysosome membrane.

Images



Staining of rat peritoneal macrophages with Alexa Fluor®647 conjugated mouse anti rat CD68, clone ED1 (ab31630, red filled histogram) following permeabilization with Leucoperm.

Please note: All products are "FOR RESEARCH USE ONLY. NOT FOR USE IN DIAGNOSTIC PROCEDURES"

Our Abpromise to you: Quality guaranteed and expert technical support

- Replacement or refund for products not performing as stated on the datasheet
- Valid for 12 months from date of delivery
- Response to your inquiry within 24 hours
- We provide support in Chinese, English, French, German, Japanese and Spanish
- Extensive multi-media technical resources to help you
- We investigate all quality concerns to ensure our products perform to the highest standards

If the product does not perform as described on this datasheet, we will offer a refund or replacement. For full details of the Abpromise, please visit <https://www.abcam.com/abpromise> or contact our technical team.

Terms and conditions

- Guarantee only valid for products bought direct from Abcam or one of our authorized distributors