

Product datasheet

Anti-CD68 antibody [PG-M1] ab783

★★★★★ [2 Abreviews](#) [15 References](#) [2 Images](#)

Overview

Product name	Anti-CD68 antibody [PG-M1]
Description	Mouse monoclonal [PG-M1] to CD68
Host species	Mouse
Tested applications	Suitable for: IHC-P Unsuitable for: ICC or IHC-Fr
Species reactivity	Reacts with: Human
Immunogen	Tissue, cells or virus corresponding to CD68. Gaucher cells
Positive control	IHC-P: Human tonsil and granulomatous inflammatory tissues.
General notes	<p>The Life Science industry has been in the grips of a reproducibility crisis for a number of years. Abcam is leading the way in addressing this with our range of recombinant monoclonal antibodies and knockout edited cell lines for gold-standard validation. Please check that this product meets your needs before purchasing.</p> <p>If you have any questions, special requirements or concerns, please send us an inquiry and/or contact our Support team ahead of purchase. Recommended alternatives for this product can be found below, along with publications, customer reviews and Q&As</p>

Properties

Form	Liquid
Storage instructions	Shipped at 4°C. Store at +4°C short term (1-2 weeks). Store at -20°C or -80°C. Avoid freeze / thaw cycle.
Storage buffer	pH: 7.3 Preservative: 0.05% Sodium azide Constituents: 98.95% Tissue culture supernatant, 1% BSA
Purity	Tissue culture supernatant
Clonality	Monoclonal
Clone number	PG-M1
Isotype	IgG3
Light chain type	kappa

Applications

The Abpromise guarantee

Our **Abpromise guarantee** covers the use of ab783 in the following tested applications.

The application notes include recommended starting dilutions; optimal dilutions/concentrations should be determined by the end user.

Application	Abreviews	Notes
IHC-P	★★★★★ (2)	1/10 - 1/40. Perform enzymatic antigen retrieval before commencing with IHC staining protocol. (use ABC method). We suggest an incubation period of 30-60 minutes at room temperature.

Application notes

Is unsuitable for ICC or IHC-Fr.

Target

Function

Could play a role in phagocytic activities of tissue macrophages, both in intracellular lysosomal metabolism and extracellular cell-cell and cell-pathogen interactions. Binds to tissue- and organ-specific lectins or selectins, allowing homing of macrophage subsets to particular sites. Rapid recirculation of CD68 from endosomes and lysosomes to the plasma membrane may allow macrophages to crawl over selectin-bearing substrates or other cells.

Tissue specificity

Highly expressed by blood monocytes and tissue macrophages. Also expressed in lymphocytes, fibroblasts and endothelial cells. Expressed in many tumor cell lines which could allow them to attach to selectins on vascular endothelium, facilitating their dissemination to secondary sites.

Sequence similarities

Belongs to the LAMP family.

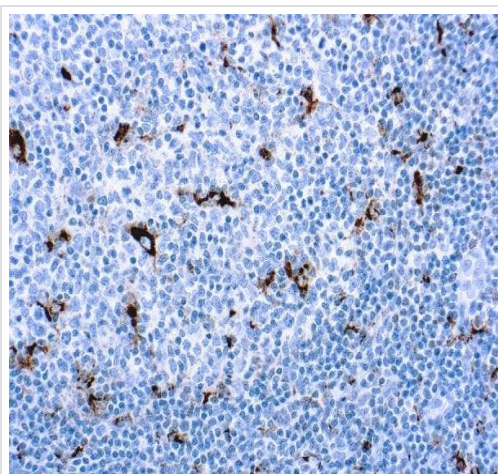
Post-translational modifications

N- and O-glycosylated.

Cellular localization

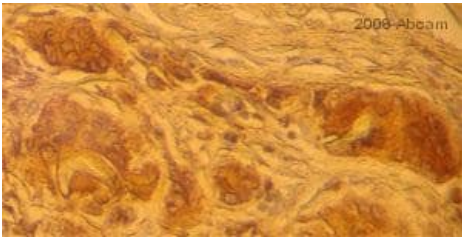
Cell membrane and Endosome membrane. Lysosome membrane.

Images



ab783 staining CD68 in Human tonsil tissue sections by Immunohistochemistry (IHC-P - paraformaldehyde-fixed, paraffin-embedded sections).

Immunohistochemistry (Formalin/PFA-fixed paraffin-embedded sections) - Anti-CD68 antibody [PG-M1] (ab783)



Immunohistochemistry (Formalin/PFA-fixed paraffin-embedded sections) - Anti-CD68 antibody [PG-M1] (ab783)

This image is courtesy of an anonymous Abreview.

Paraformaldehyde-fixed, paraffin-embedded human granulomatous inflammatory tissue stained for CD68 using ab783 in immunohistochemical analysis.

Please note: All products are "FOR RESEARCH USE ONLY. NOT FOR USE IN DIAGNOSTIC PROCEDURES"

Our Abpromise to you: Quality guaranteed and expert technical support

- Replacement or refund for products not performing as stated on the datasheet
- Valid for 12 months from date of delivery
- Response to your inquiry within 24 hours
- We provide support in Chinese, English, French, German, Japanese and Spanish
- Extensive multi-media technical resources to help you
- We investigate all quality concerns to ensure our products perform to the highest standards

If the product does not perform as described on this datasheet, we will offer a refund or replacement. For full details of the Abpromise, please visit <https://www.abcam.com/abpromise> or contact our technical team.

Terms and conditions

- Guarantee only valid for products bought direct from Abcam or one of our authorized distributors