

Product datasheet

Anti-CD68 antibody [PG-M1], prediluted ab844

★★★★★ [1 Abreviews](#) [2 References](#) [1 Image](#)

Overview

Product name	Anti-CD68 antibody [PG-M1], prediluted
Description	Mouse monoclonal [PG-M1] to CD68, prediluted
Host species	Mouse
Specificity	This antibody reacts with a glycoprotein of 110 kDa, expressed as intracytoplasmic molecule. It stains macrophages in a wide variety of tissues. Myeloid precursor cells and peripheral granulocytes are negative. This antibody does not react with granulocytes and their precursor cells.
Tested applications	Suitable for: IHC-P
Species reactivity	Reacts with: Human
Immunogen	Tissue, cells or virus corresponding to Mouse CD68. BALB/C mice were immunized with Gaucher's cells.
General notes	<p>The Life Science industry has been in the grips of a reproducibility crisis for a number of years. Abcam is leading the way in addressing this with our range of recombinant monoclonal antibodies and knockout edited cell lines for gold-standard validation. Please check that this product meets your needs before purchasing.</p> <p>If you have any questions, special requirements or concerns, please send us an inquiry and/or contact our Support team ahead of purchase. Recommended alternatives for this product can be found below, along with publications, customer reviews and Q&As</p>

Properties

Form	Liquid
Storage instructions	Shipped at 4°C. Store at +4°C. Do Not Freeze.
Storage buffer	pH: 7.3 Preservative: 0.05% Sodium azide
Clonality	Inert stabilizer Monoclonal
Clone number	PG-M1
Myeloma	unknown
Isotype	IgG3

Light chain type

kappa

Applications

The Abpromise guarantee

Our **Abpromise guarantee** covers the use of ab844 in the following tested applications.

The application notes include recommended starting dilutions; optimal dilutions/concentrations should be determined by the end user.

Application	Abreviews	Notes
IHC-P	★★★★★ (1)	

Application notes

This antibody has been pretitered and quality controlled to work on formalin-fixed paraffin-embedded as well as acetone fixed cryostat tissue sections.

No further titration is required.

We suggest an incubation period of 30-60 minutes at room temperature.

However, depending upon the fixation conditions and the staining system employed, optimal incubation should be determined by the user.

Enzymatic predigestion with proteolytic enzymes is recommended for paraffin embedded tissue sections.

This antibody is not recommended for frozen sections or cell smears.

Target

Function

Could play a role in phagocytic activities of tissue macrophages, both in intracellular lysosomal metabolism and extracellular cell-cell and cell-pathogen interactions. Binds to tissue- and organ-specific lectins or selectins, allowing homing of macrophage subsets to particular sites. Rapid recirculation of CD68 from endosomes and lysosomes to the plasma membrane may allow macrophages to crawl over selectin-bearing substrates or other cells.

Tissue specificity

Highly expressed by blood monocytes and tissue macrophages. Also expressed in lymphocytes, fibroblasts and endothelial cells. Expressed in many tumor cell lines which could allow them to attach to selectins on vascular endothelium, facilitating their dissemination to secondary sites.

Sequence similarities

Belongs to the LAMP family.

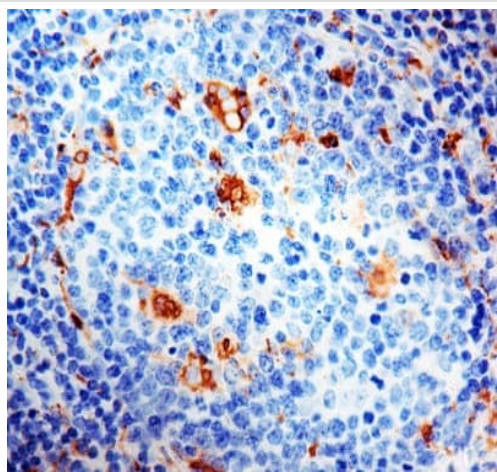
Post-translational modifications

N- and O-glycosylated.

Cellular localization

Cell membrane and Endosome membrane. Lysosome membrane.

Images



Immunohistochemistry (Formalin/PFA-fixed paraffin-embedded sections) - Anti-CD68 antibody [PG-M1], prediluted (ab844)

ab844 staining CD68 in formalin-fixed, paraffin-embedded Human tonsil tissue by Immunohistochemistry. Staining was detected using DAB.

Please note: All products are "FOR RESEARCH USE ONLY. NOT FOR USE IN DIAGNOSTIC PROCEDURES"

Our Abpromise to you: Quality guaranteed and expert technical support

- Replacement or refund for products not performing as stated on the datasheet
- Valid for 12 months from date of delivery
- Response to your inquiry within 24 hours
- We provide support in Chinese, English, French, German, Japanese and Spanish
- Extensive multi-media technical resources to help you
- We investigate all quality concerns to ensure our products perform to the highest standards

If the product does not perform as described on this datasheet, we will offer a refund or replacement. For full details of the Abpromise, please visit <https://www.abcam.com/abpromise> or contact our technical team.

Terms and conditions

- Guarantee only valid for products bought direct from Abcam or one of our authorized distributors