


Product datasheet

Anti-CD75 antibody ab124407

★★★★★ [1 Abreviews](#) [2 Images](#)

Overview

Product name	Anti-CD75 antibody
Description	Rabbit polyclonal to CD75
Host species	Rabbit
Tested applications	Suitable for: WB, IHC-P
Species reactivity	Reacts with: Mouse, Human Predicted to work with: Rat 
Immunogen	Synthetic peptide corresponding to a region within internal amino acids of Human CD75.
General notes	<p>The Life Science industry has been in the grips of a reproducibility crisis for a number of years. Abcam is leading the way in addressing this with our range of recombinant monoclonal antibodies and knockout edited cell lines for gold-standard validation. Please check that this product meets your needs before purchasing.</p> <p>If you have any questions, special requirements or concerns, please send us an inquiry and/or contact our Support team ahead of purchase. Recommended alternatives for this product can be found below, along with publications, customer reviews and Q&As</p>

Properties

Form	Liquid
Storage instructions	Shipped at 4°C. Store at -20°C. Stable for 12 months at -20°C.
Storage buffer	pH: 7.40 Preservative: 0.02% Sodium azide Constituents: 0.88% Sodium chloride, 49% PBS, 50% Glycerol (glycerin, glycerine) PBS is without Mg ²⁺ and Ca ²⁺
Purity	Immunogen affinity purified
Clonality	Polyclonal
Isotype	IgG

Applications

The Abpromise guarantee

Our **Abpromise guarantee** covers the use of ab124407 in the following tested applications.

The application notes include recommended starting dilutions; optimal dilutions/concentrations should be determined by the end user.

Application	Abreviews	Notes
WB		1/500 - 1/1000. Predicted molecular weight: 47 kDa.
IHC-P		Use a concentration of 5 µg/ml.

Target

Function

Transfers sialic acid from the donor of substrate CMP-sialic acid to galactose containing acceptor substrates.

Pathway

Protein modification; protein glycosylation.

Sequence similarities

Belongs to the glycosyltransferase 29 family.

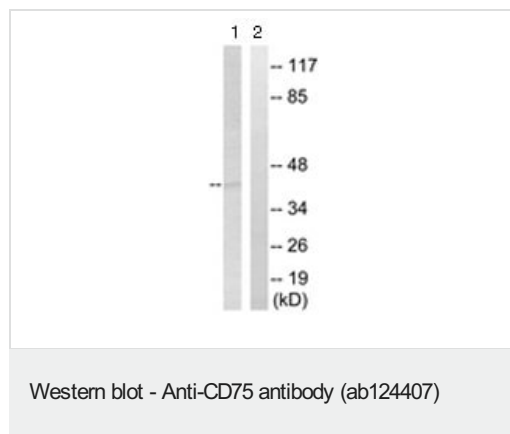
Post-translational modifications

The soluble form derives from the membrane form by proteolytic processing. The HB-6, CDW75, and CD76 differentiation antigens are cell-surface carbohydrate determinants generated by this enzyme.

Cellular localization

Golgi apparatus > Golgi stack membrane. Secreted. Membrane-bound form in trans cisternae of Golgi. Secreted into the body fluid.

Images

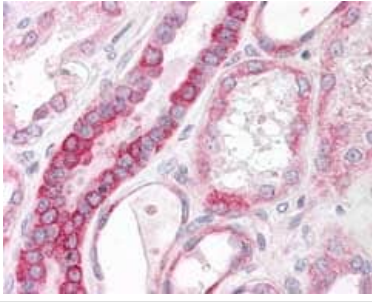


All lanes : Anti-CD75 antibody (ab124407) at 1/500 dilution

Lane 1 : RAW264.7 cell extract

Lane 2 : RAW264.7 cell extract with synthesized peptide

Predicted band size: 47 kDa



Staining of CD75 in Paraffin-embedded Human kidney tissue by Immunohistochemistry using ab124407 at a concentration of 5 µg/ml.

Immunohistochemistry (Formalin/PFA-fixed paraffin-embedded sections) - Anti-CD75 antibody (ab124407)

Please note: All products are "FOR RESEARCH USE ONLY. NOT FOR USE IN DIAGNOSTIC PROCEDURES"

Our Abpromise to you: Quality guaranteed and expert technical support

- Replacement or refund for products not performing as stated on the datasheet
- Valid for 12 months from date of delivery
- Response to your inquiry within 24 hours
- We provide support in Chinese, English, French, German, Japanese and Spanish
- Extensive multi-media technical resources to help you
- We investigate all quality concerns to ensure our products perform to the highest standards

If the product does not perform as described on this datasheet, we will offer a refund or replacement. For full details of the Abpromise, please visit <https://www.abcam.com/abpromise> or contact our technical team.

Terms and conditions

- Guarantee only valid for products bought direct from Abcam or one of our authorized distributors